



**342 BONNIE CIR., SUITE A
CORONA, CA**

FOR LEASE

PROPERTY FEATURES

- West Corona Location
- ± 3,660 SF of Two-Story Creative Office Space
- High Speed Fiberoptic Internet (Verify)
- 6 Offices
- Large Conference Room
- 2 Open Bullpen Areas
- 3 Restrooms
- Breakroom
- 8 Parking Stalls (Street Parking Available)
- Immediate Access to the **91** & **15** Freeway



RYAN MOORE, SIOR
Senior Vice President, Partner
909.545.8011
RMoore@voitco.com
Lic #01821438



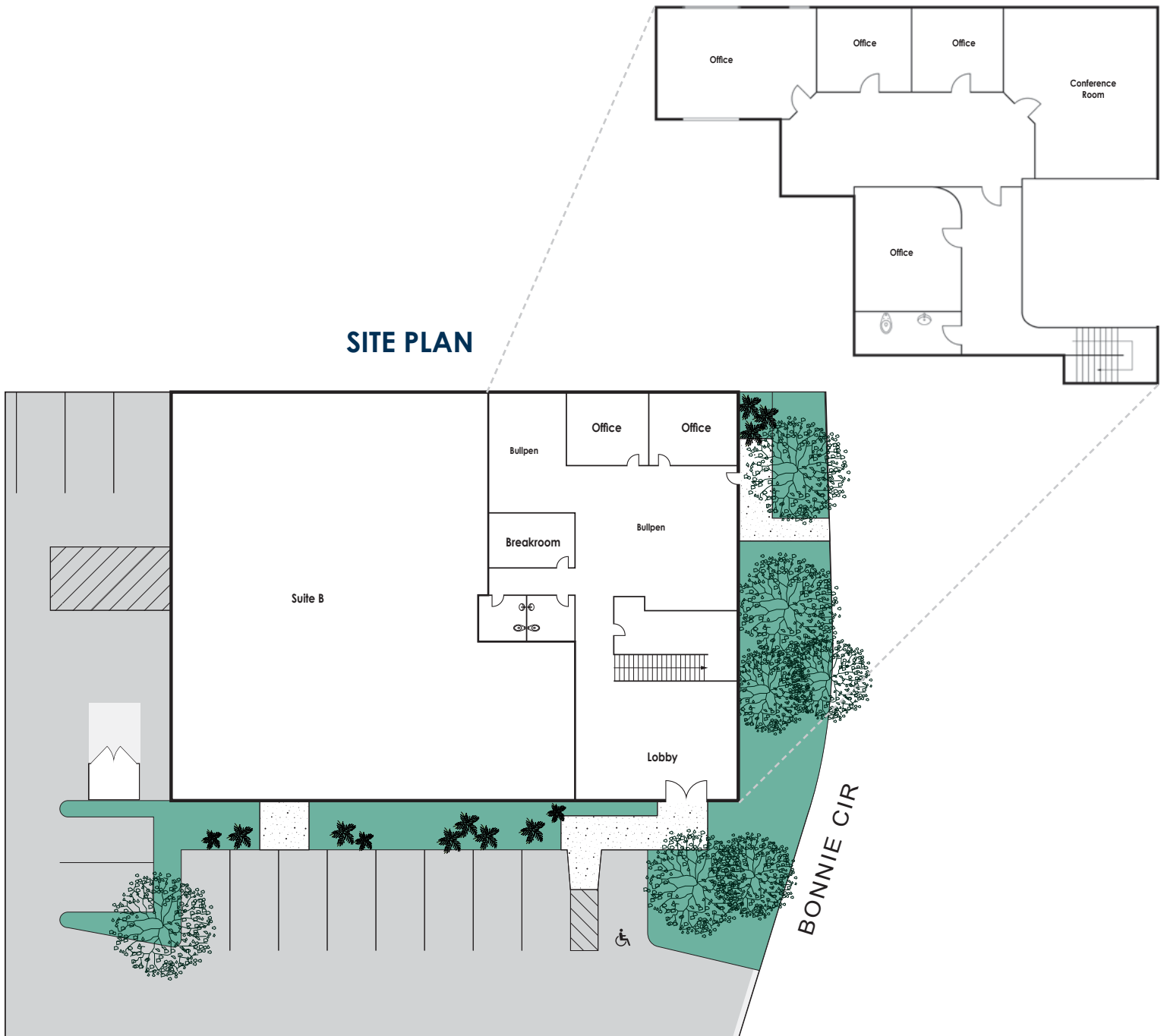
RYAN CLAYTON
Associate
714.935.2319
RClayton@voitco.com
Lic #01997591

342 BONNIE CIR., SUITE A
CORONA, CA

±3,660 SQ. FT.
FOR LEASE

SITE PLAN

SECOND FLOOR



*Site plan not to scale



RYAN MOORE, SIOR
Senior Vice President, Partner
909.545.8011
RMoore@voitco.com
Lic #01821438



RYAN CLAYTON
Associate
714.935.2319
RClayton@voitco.com
Lic #01997591

Voit

REAL ESTATE SERVICES

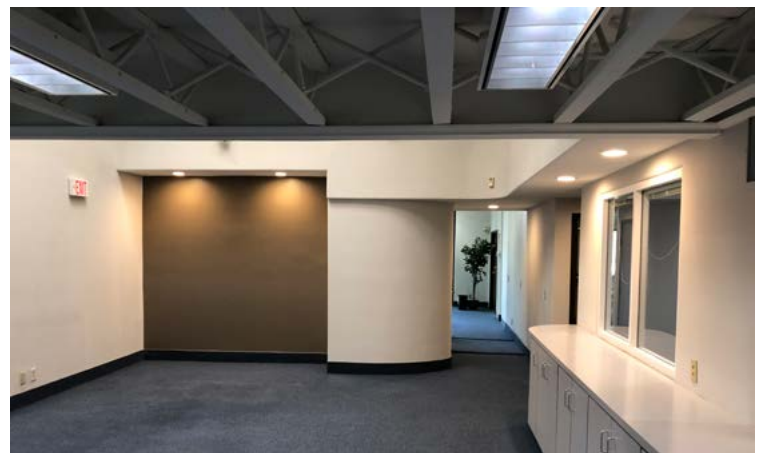
2400 E. Katella Avenue
Suite 750
Anaheim, CA 92806
Lic #01991785

www.VoitCo.com

The information contained herein has been obtained from sources we deem reliable. While we have no reason to doubt its accuracy, we do not guarantee it.
Licensed as Real Estate Salesperson by the CA Bur of Real Estate. ©2019 Voit Real Estate Services, Inc. All Rights Reserved. License #01991785

**342 BONNIE CIR., SUITE A
CORONA, CA**

**±3,660 SQ. FT.
FOR LEASE**



RYAN MOORE, SIOR
Senior Vice President, Partner
909.545.8011
RMoore@voitco.com
Lic #01821438



RYAN CLAYTON
Associate
714.935.2319
RClayton@voitco.com
Lic #01997591

Voit
REAL ESTATE SERVICES
2400 E. Katella Avenue
Suite 750
Anaheim, CA 92806
Lic #01991785
www.VoitCo.com