

**FOR  
LEASE**



**LAKE FOREST PLAZA**

23072 LAKE CENTER DRIVE | LAKE FOREST, CALIFORNIA  
OFFICE SPACE FOR LEASE | \$1.00 FSG FOR 1ST 3 MONTHS\*

\*MINIMUM 3-YEAR TERM

**orange county**  
OFFICE | GROUP

**LEE &  
ASSOCIATES**  
COMMERCIAL REAL ESTATE SERVICES

# PROPERTY FEATURES

- Professional Office Building Consisting of ±21,596 SF
- Additional Building Renovations To Come
- Minutes from Irvine Spectrum
- Surrounded by New Development
- Free Covered Surface Parking
- Located in Up and Coming City of Lake Forest
- Open Courtyard Area
- Immediate Access to the 5 & 405 Freeways
- Functional Patio Areas
- Lease Rate: \$2.25 FSG

## PROMO RATE

\$1.00 FSG FOR THE FIRST 3 MONTHS (MIN. 3-YEAR TERM)



**ALLEN BASSO**  
Senior Vice President  
Lic. #01298152  
949.790.3130  
abasso@leeirvine.com



**ERIC DARNELL**  
Senior Vice President  
Lic. #01888743  
949.790.3157  
edarnell@leeirvine.com



**KYLEE KING**  
Associate  
Lic. #02101275  
949.790.3108  
kking@leeirvine.com



### DISTANCES TO:

- The Great Park - 12 Min.
- Irvine Spectrum - 9 Min.
- 405 & 5 Freeway - 3 Min.
- 133 Freeway - 10 Min.
- Holiday Inn - 1 Min.
- Lake Forest Gateway - 1 Min.

# CITY OF LAKE FOREST

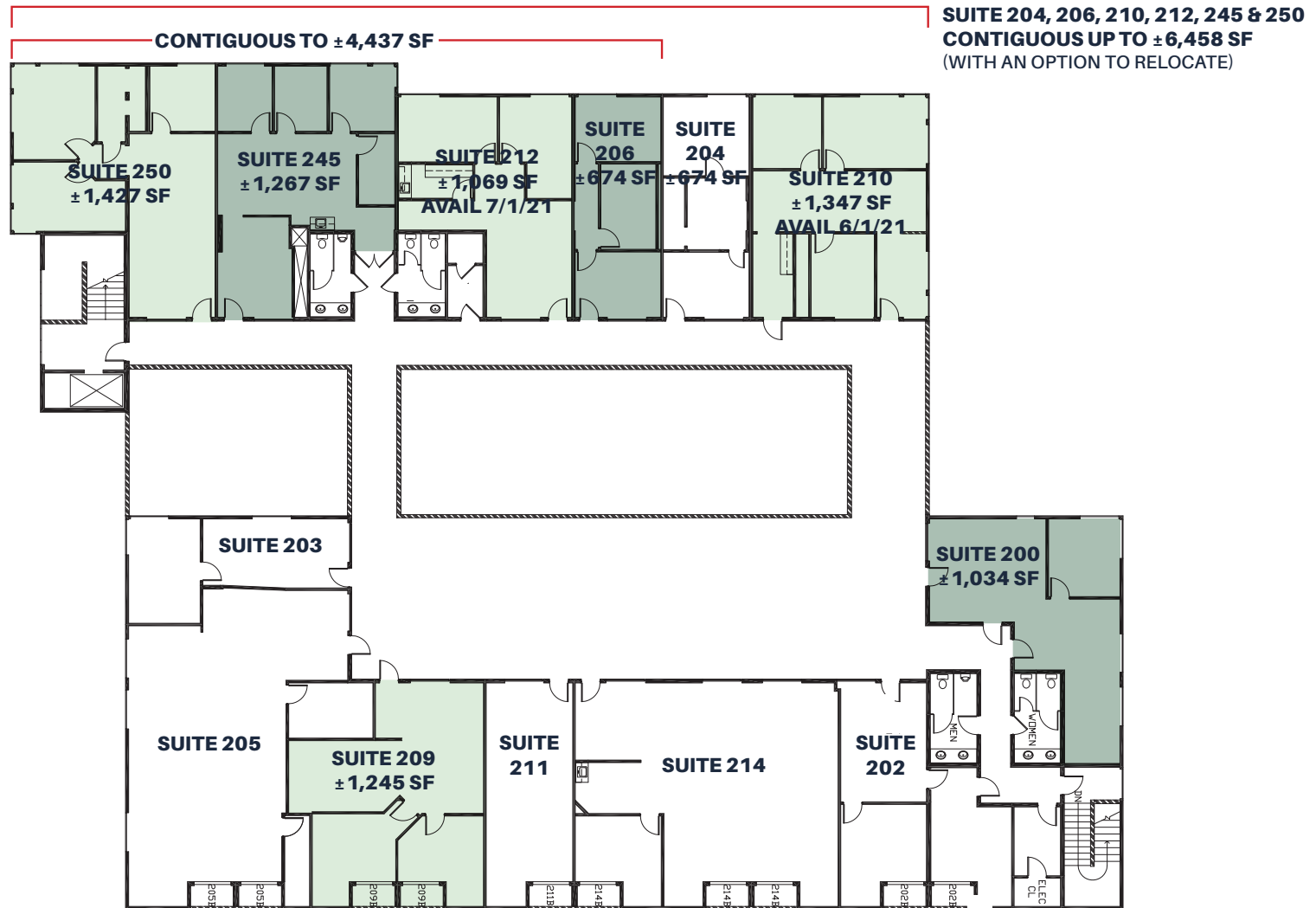


# LAKE FOREST PLAZA

23072 LAKE CENTER DRIVE | LAKE FOREST, CALIFORNIA

# LAKE FOREST PLAZA

23072 LAKE CENTER DRIVE | LAKE FOREST, CALIFORNIA



**ALLEN BASSO**  
Senior Vice President  
Lic. #01298152  
949.790.3130  
abasso@leeirvine.com

**ERIC DARNELL**  
Senior Vice President  
Lic. #01888743  
949.790.3157  
edarnell@leeirvine.com

**KYLEE KING**  
Associate  
Lic. #02101275  
949.790.3108  
kking@leeirvine.com



AVAILABILITY