

FOR LEASE

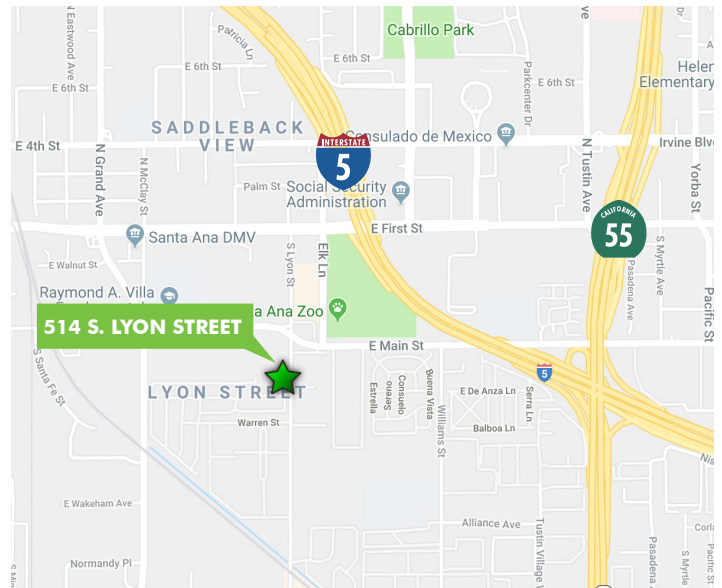
**±8,841 SF AVAILABLE**

514 S. LYON STREET  
SANTA ANA, CA



## PROPERTY FEATURES

- + ±8,841 SF on 1.2 Acres
- + ±2,685 SF of Office Space
- + 5:1 Parking Ratio
- + One (1) Grade Level Door (12'x12')
- + Large Yard Area
- + 14' Minimum Clear Height
- + Central OC Location
- + Call to Show



## CONTACT US

### BRAD BIERBAUM

Senior Vice President  
+1 714 371 9210  
brad.bierbaum@cbre.com  
Lic. 00996170

### RYAN PETERSON

Senior Vice President  
+1 714 371 9212  
ryan.peterson@cbre.com  
Lic. 01336025

[www.cbre.com](http://www.cbre.com)

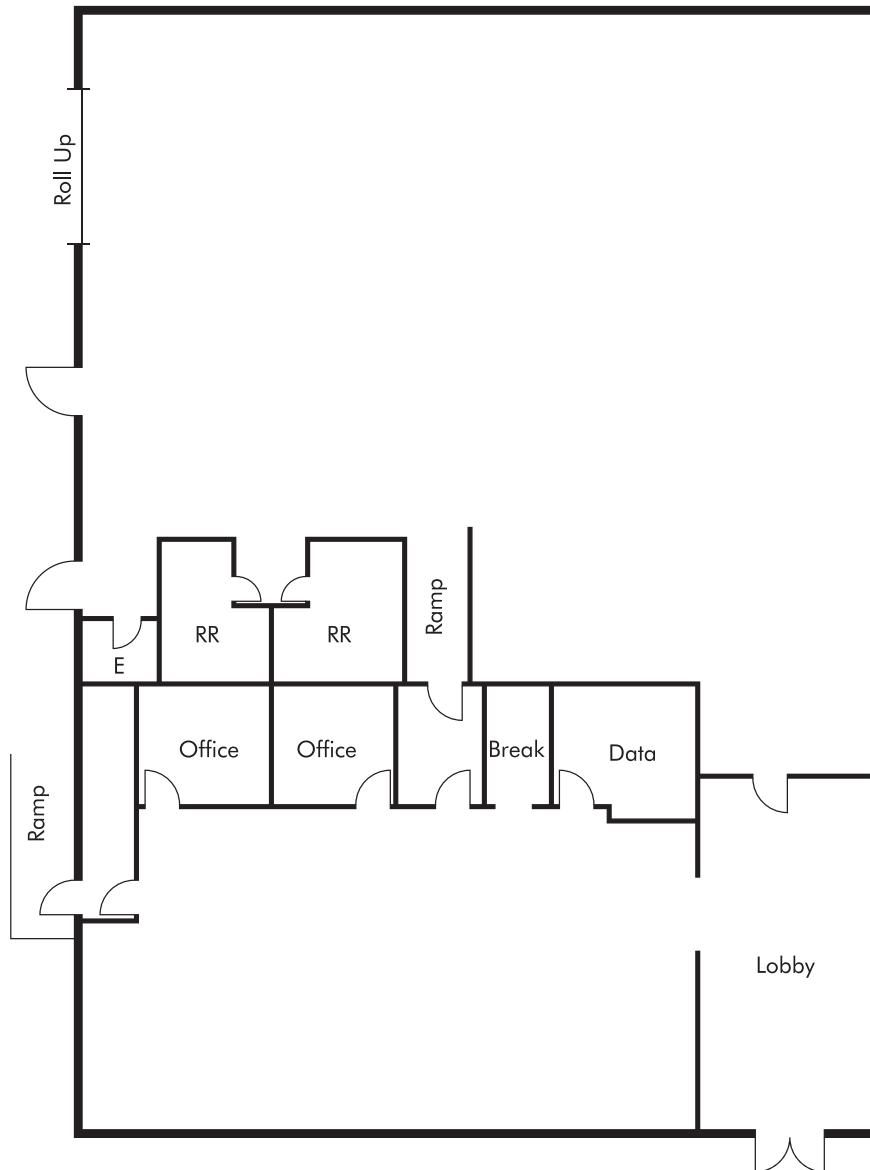
**CBRE**

FOR LEASE  
**±8,841 SF AVAILABLE**

**514**  
**S. LYON ST.**  
Santa Ana, CA



**FLOOR PLAN**



© 2019 CBRE, Inc. This information has been obtained from sources believed reliable. We have not verified it and make no guarantee, warranty or representation about it. Any projections, opinions, assumptions or estimates used are for example only and do not represent the current or future performance of the property. You and your advisors should conduct a careful, independent investigation of the property to determine to your satisfaction the suitability of the property for your needs. Photos herein are the property of their respective owners and use of these images without the express written consent of the owner is prohibited. CBRE and the CBRE logo are service marks of CBRE, Inc. and/or its affiliated or related companies in the United States and other countries. All other marks displayed on this document are the property of their respective owners.  
N:\Team-Revere\Marketing - InDesign\514 S Lyon St\514 S Lyon St \_ Flyer \_ v03AK.indd