



# SLOVER GATEWAY COMMERCE CENTER

## For Lease 190,554 SF

Slover Ave

Cypress Ave

16477 SLOVER AVE, FONTANA, CA 92337

## PROPERTY HIGHLIGHTS

- 36' Warehouse Clearance
- 6,896 SF of Office Space
- 185' Secured All Concrete Truck Court
- 24 Dock High Doors (9'x10')
- 10 Dock Levelers (40,000 lb Mechanical)
- 1 Ground Level Door (12'x14')
- 33 Trailer Stalls
- 8" Warehouse Slab (4,000 PSI)
- ESFR Sprinkler System
- 1,200 Amp Electrical Service with 4,000 Amp UGPS
- 20 Foot Candle LED Warehouse Lighting
- 92 Auto Parking Spaces

[Property Website](#)



KEVIN MCKENNA  
(909) 937-6342  
License No. 00887289  
kevin.mckenna@colliers.com

GREG MERRILL  
(909) 937-6361  
License No. 01906709  
greg.merrill@colliers.com

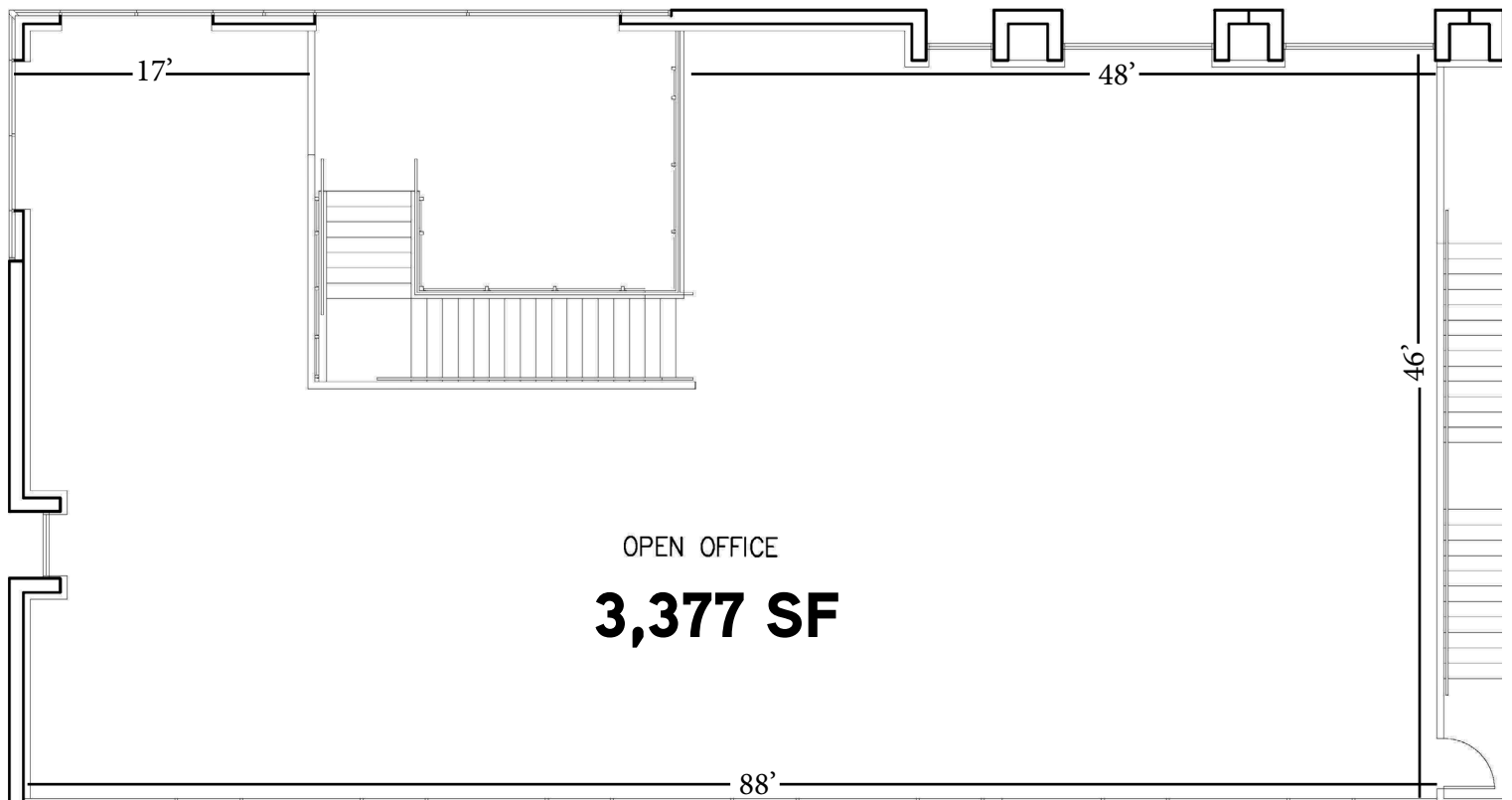
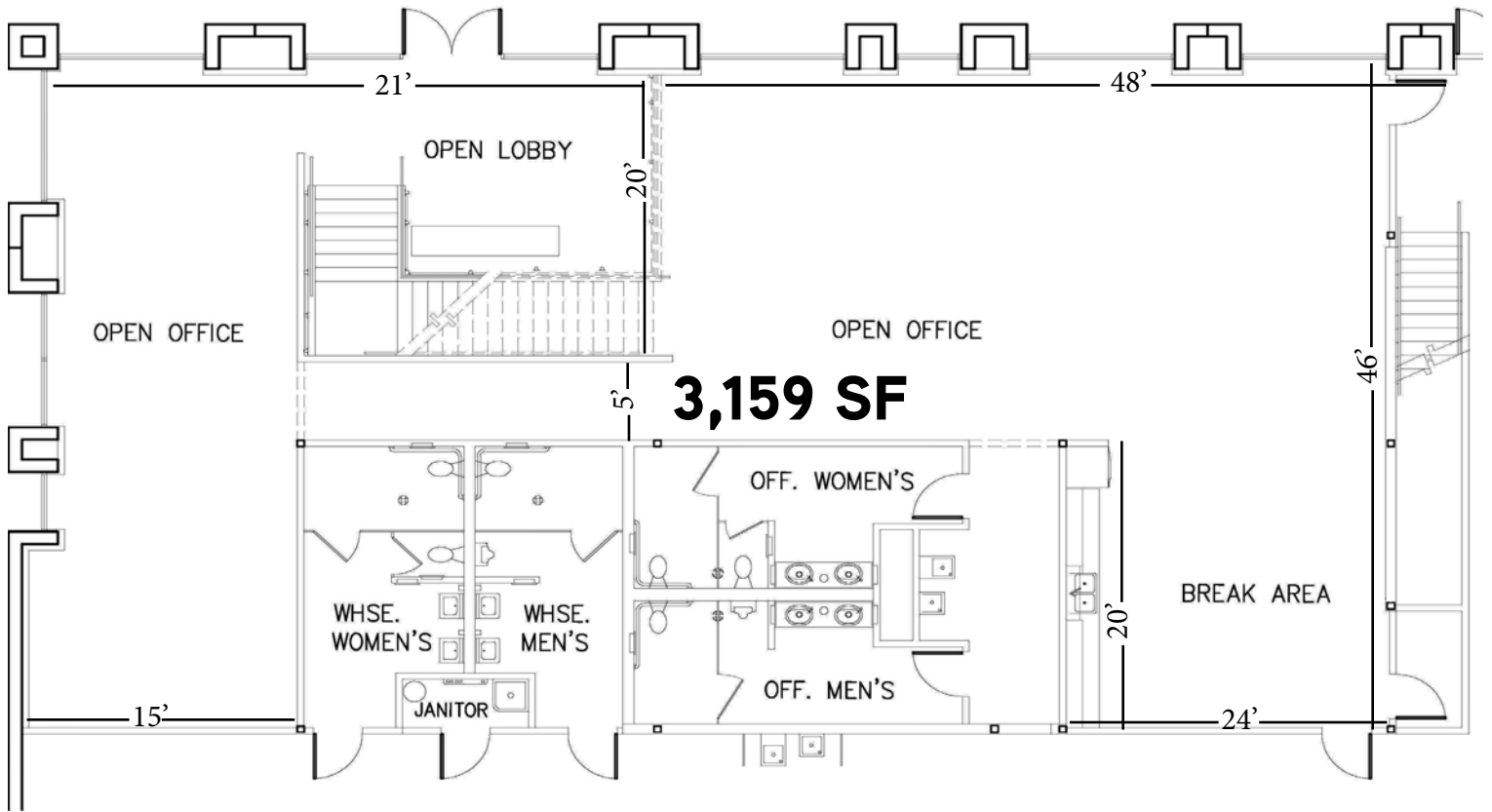


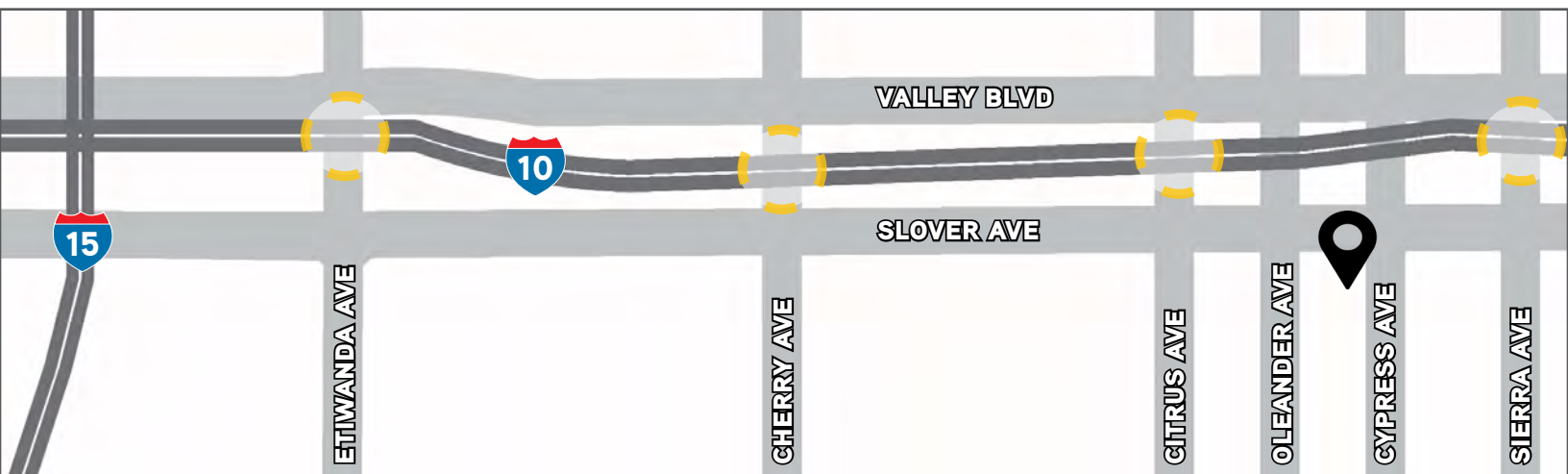
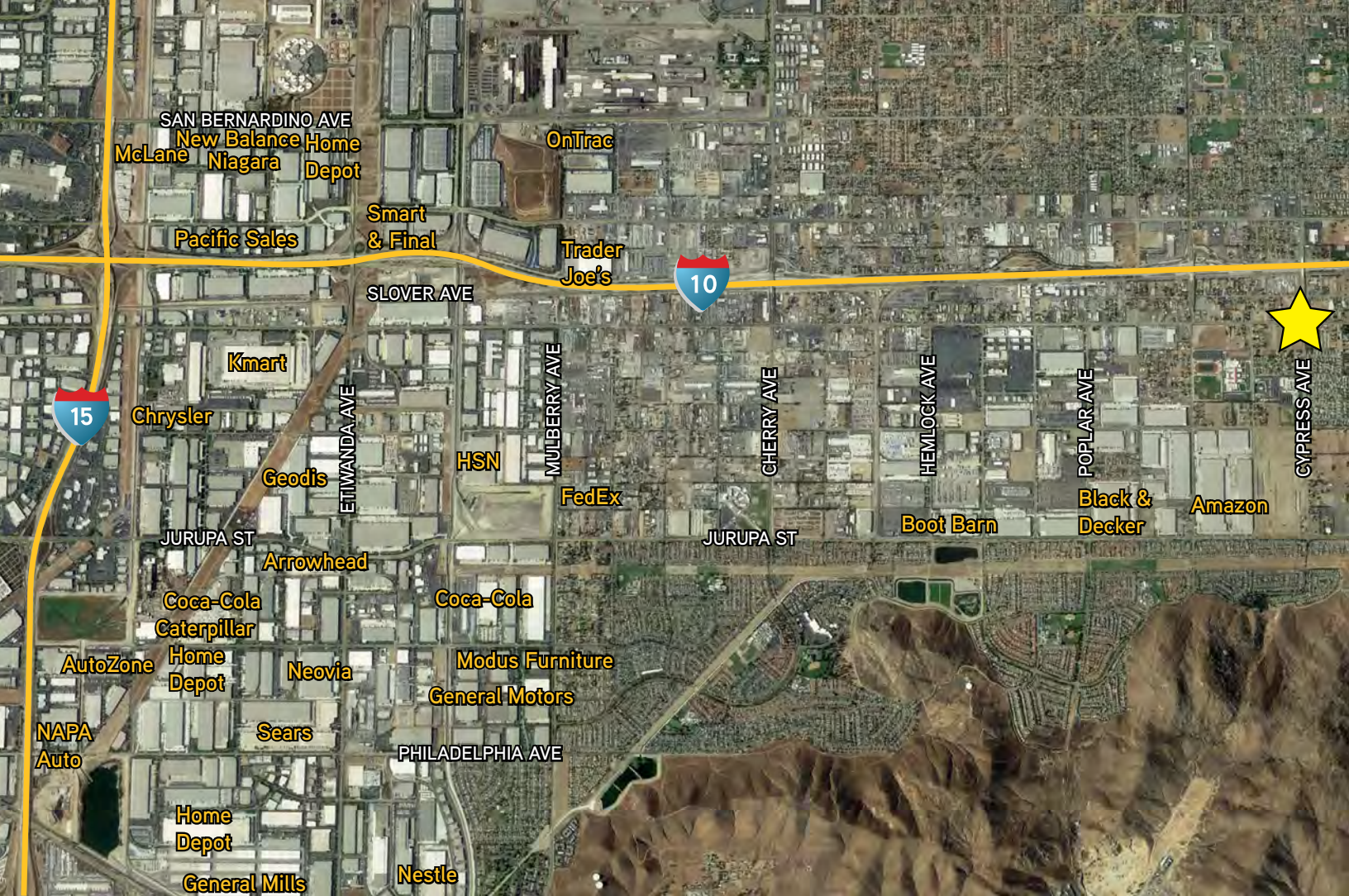
# SLOVER GATEWAY COMMERCE CENTER

16477 SLOVER AVE, FONTANA, CA 92337



# SLOVER GATEWAY COMMERCE CENTER





KEVIN MCKENNA  
 (909) 937-6342  
 License No. 00887289  
 kevin.mckenna@colliers.com

GREG MERRILL  
 (909) 937-6361  
 License No. 01906709  
 greg.merrill@colliers.com



COLLIERS INTERNATIONAL 2855 E. Guasti Road, Suite 401, Ontario, CA 91761

This document has been prepared by Colliers International for advertising and general information only. Colliers International makes no guarantees, representations or warranties of any kind, expressed or implied, regarding the information including, but not limited to, warranties of content, accuracy and reliability. Any interested party should undertake their own inquiries as to the accuracy of the information. Colliers International excludes unequivocally all inferred or implied terms, conditions and warranties arising out of this document and excludes all liability for loss and damages arising therefrom. This publication is the copyrighted property of Colliers International and/or its licensor(s). ©2019. All rights reserved.