

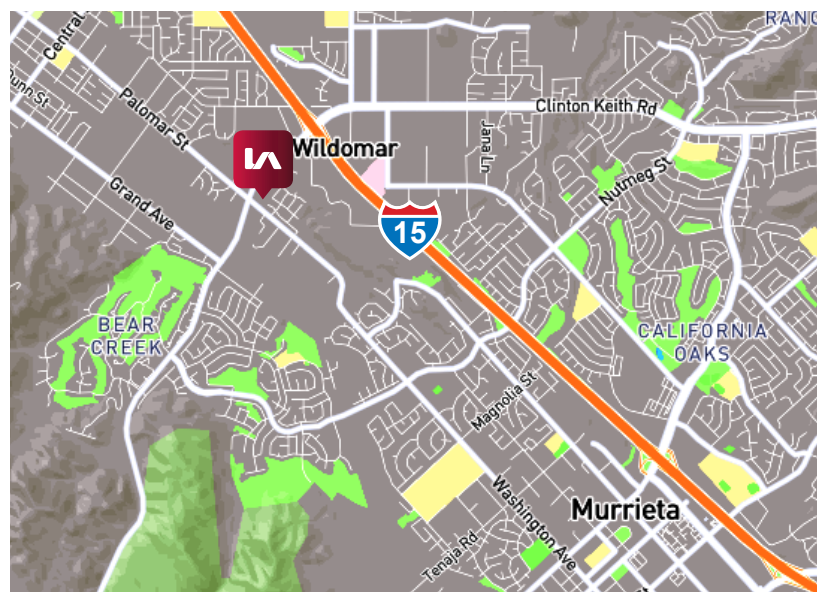
# OFFICE / RETAIL SPACES FOR LEASE RENAISSANCE PLAZA

32326 CLINTON KEITH RD | WILDOMAR, CA



## HIGHLIGHTS:

- Join: Coldwell Banker Real Estate, West Coast Escrow, Baron's Market, El Pollo Loco, Stadium Pizza & Yellow Basket
- Offices / Retail Suites Available from  $\pm 1,200$  -  $\pm 8,869$  SF
- Located on Clinton Keith Road (Major arterial in Murrieta & Wildomar)
- Excellent Location, Easy access to I-15 & I-215 freeways, Ample Parking.
- Ideal for accounting, financial planners, dental, medical, chiropractor, counseling, veterinarian and other general office and retail services.
- Exterior Eye Brow Building Signage
- Elevator Served



## LEASE RATES STARTING AT:

<b>1ST FLOOR RETAIL/OFFICE:</b>	<b>2ND FLOOR OFFICE:</b>
<b>\$2.25 NNN*</b>	<b>\$1.75 MG</b>

*\*Estimated at \$0.55 PSF*

Sheri Shoemaker  
951.445.4510  
sshoeemaker@leetemecula.com  
DRE #00846946

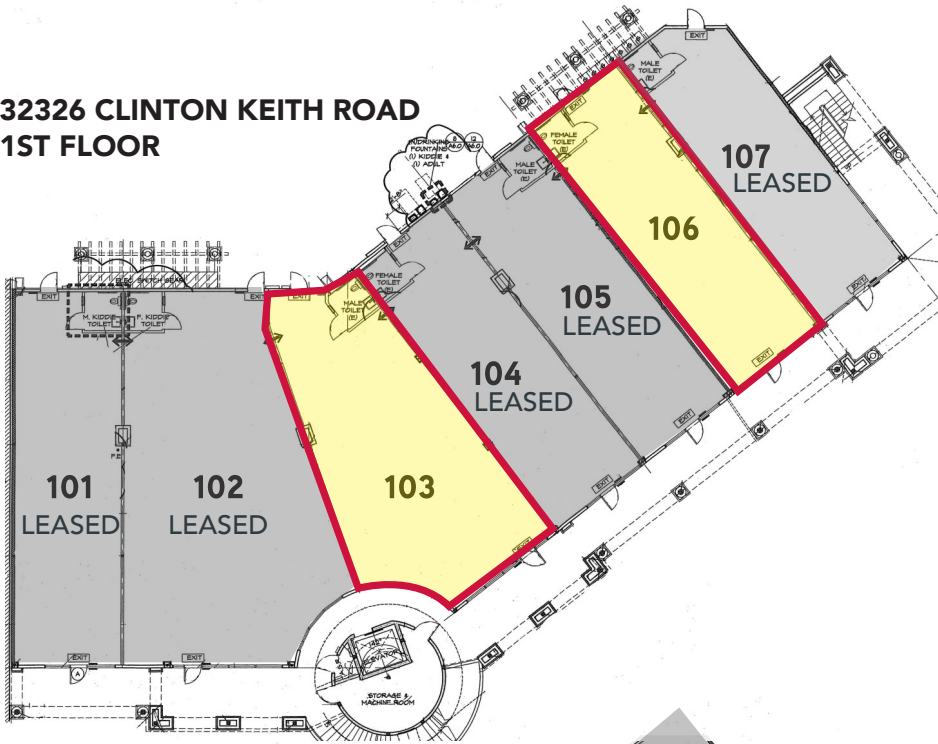
Mary Piper  
951.445.4516  
mpiper@leetemecula.com  
DRE #01268829

No warranty or representation has been made to the accuracy of the foregoing information. Terms of sale or lease and availability are subject to change or withdrawal without notice. Lee & Associates Commercial Real Estate Services, Inc. - Riverside. 25240 Hancock Avenue, Suite 100 - Murrieta, CA 92562 | Corporate ID# 01048055

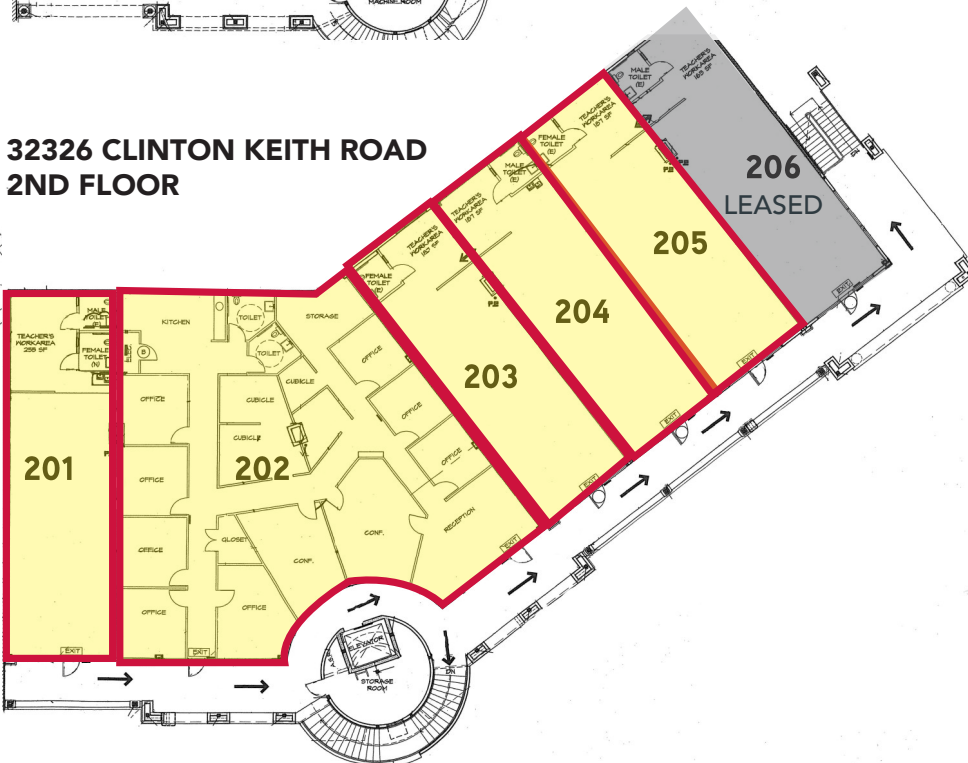
# OFFICE / RETAIL SPACES FOR LEASE RENAISSANCE PLAZA

32326 CLINTON KEITH RD | WILDOMAR, CA

## 32326 CLINTON KEITH ROAD 1ST FLOOR



## 32326 CLINTON KEITH ROAD 2ND FLOOR



### AVAILABLE 32326 CLINTON KEITH ROAD

Unit	Unit SF	Max SF	Rate
#103	±1,631 SF	±1,631 SF	\$2.25 PSF
#106	±1,200 SF	±1,200 SF	\$2.25 PSF
#201	±1,359 SF	±8,869 SF	\$1.75 PSF
#202	±3,910 SF	±8,869 SF	\$1.75 PSF
#203	±1,200 SF	±8,869 SF	\$1.75 PSF
#204	±1,200 SF	±8,869 SF	\$1.75 PSF
#205	±1,200 SF	±8,869 SF	\$1.75 PSF

Rev. 11/18/2019

Sheri Shoemaker  
951.445.4510  
sshoeemaker@leetemecula.com  
DRE #00846946

Mary Piper  
951.445.4516  
mpiper@leetemecula.com  
DRE #01268829

No warranty or representation has been made to the accuracy of the foregoing information. Terms of sale or lease and availability are subject to change or withdrawal without notice. Lee & Associates Commercial Real Estate Services, Inc. - Riverside. 25240 Hancock Avenue, Suite 100 - Murrieta, CA 92562 | Corporate ID# 01048055