



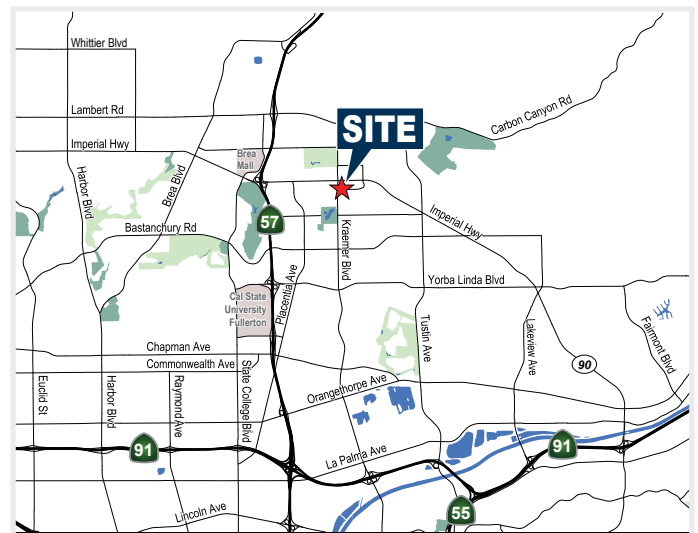
BREA PARK CENTRE

2601 Saturn Street, Brea, CA 92821

±949-1,935 SQ. FT. FOR LEASE

PROPERTY FEATURES

- High Image Office Building under New Ownership
- Suites Ranging from ±949-1,935 Square Feet
- Functional Floor Plans
- Building Recently Refurbished Including Exterior Paint, New Landscaping, and Upgraded Restrooms and Common Areas
- Immediate Freeway Access to **57** Freeway off Imperial Highway
- Adjacent to 4 Million Square Feet of Retail and Service Amenities



MIKE BOOMER

Vice President

714.935.2344

Lic. #01209091

mboomer@voitco.com

Voit

REAL ESTATE SERVICES

2400 E. Katella Avenue

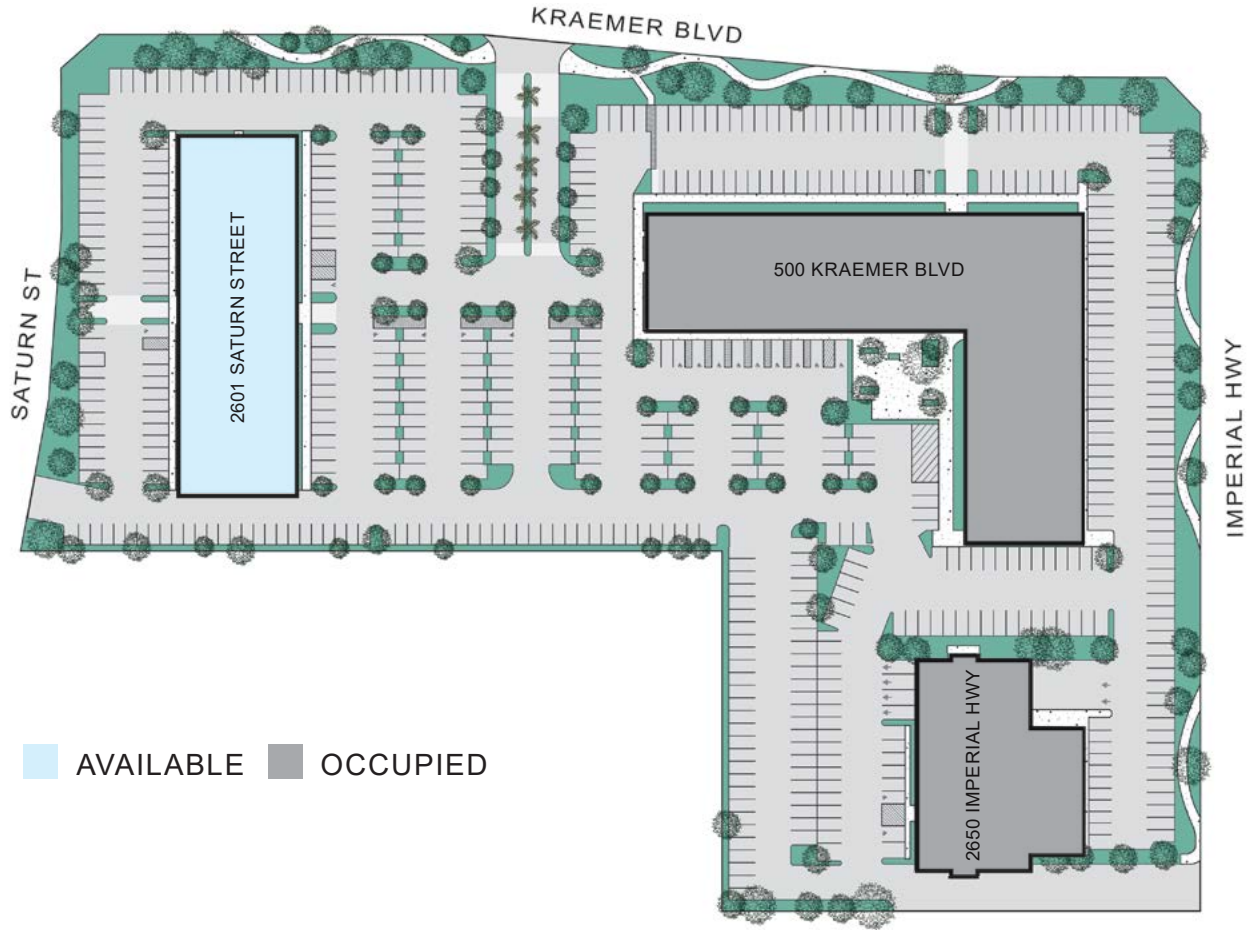
Suite 750

Anaheim, CA 92806

Lic #01991785

www.VoitCo.com

SITE PLAN



■ AVAILABLE ■ OCCUPIED

Floor	Suite	SF Available	Rent	Comments
1 st	125	±949	\$2.10 FSG	Reception, 3 private offices, open office, Available Now

BREA PARK CENTRE
2601 Saturn Street, Brea, CA 92821

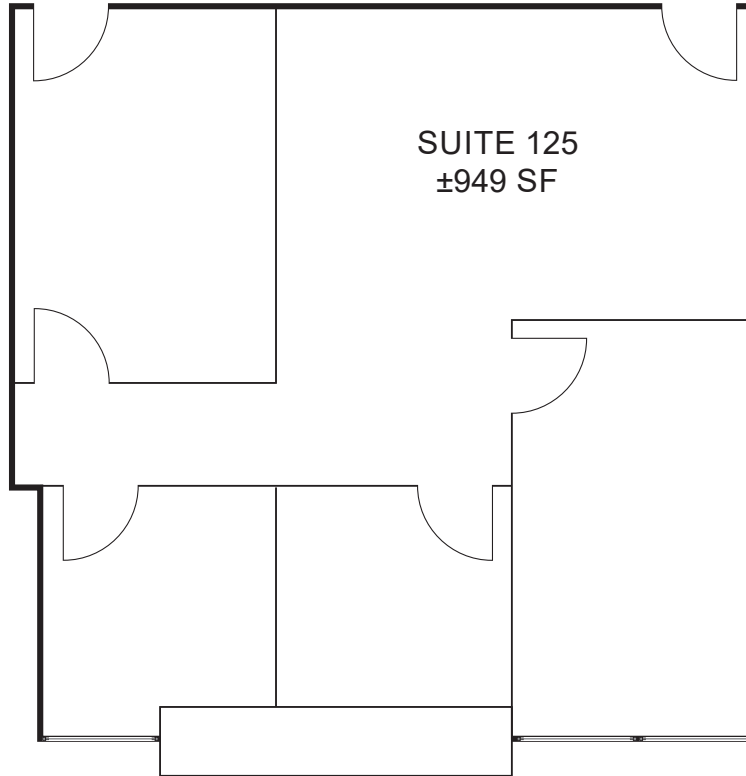
±949-1,935 SQ. FT.
FOR LEASE

MIKE BOOMER
Vice President
714.935.2344
Lic. #01209091
mboomer@voitco.com

Voit
REAL ESTATE SERVICES

2400 E. Katella Avenue
Suite 750
Anaheim, CA 92806
Lic #01991785
www.VoitCo.com

FLOOR PLAN



BREA PARK CENTRE
2601 Saturn Street, Brea, CA 92821

±949-1,935 SQ. FT.
FOR LEASE

MIKE BOOMER
Vice President
714.935.2344
Lic. #01209091
mboomer@voitco.com

Voit
REAL ESTATE SERVICES

2400 E. Katella Avenue
Suite 750
Anaheim, CA 92806
Lic #01991785
www.VoitCo.com