



CREATIVE OFFICE SPACE IN DOWNTOWN RIVERSIDE



3870 MAIN STREET | RIVERSIDE, CA



EXTERIOR TOUR



Lee & Associates Commercial Real Estate
Services, Inc.- Riverside
Corporate DRE #01048055
4193 Flat Rock Drive, Suite 100
Riverside, CA 92505

RICH ERICKSON
SENIOR VICE PRESIDENT
951.276.3637
rich.erickson@lee-associates.com
DRE #01219183

ANDREW PEAKE
VICE PRESIDENT
951.276.3644
apeake@lee-associates.com
DRE #01398894



CREATIVE OFFICE SPACE IN DOWNTOWN RIVERSIDE



3870 MAIN STREET | RIVERSIDE, CA

Main+Nine offers small and mid-sized firms seeking creative offices a prime location in the core of Downtown Riverside. Located adjacent to City Hall at the prominent intersection of Main and 9th Streets, Main+Nine is walking distance to the Courthouse District, Fox Performing Arts Center, Riverside Food Lab, Convention Center, Historic Mission Inn, Downtown Restaurants, and the Cultural Arts District lining Mission Inn Avenue.

The creative office space on the ground and second floor of Main+Nine is part of a five-story mixed use community completed by Ratkovich Properties (developers of the Imperial Hardware Lofts one block to the north) and includes a ground floor café and three stories of residential loft apartments. In addition, Greens Development and Black Roses Strategy and Experience firm have both located in creative office space on the second floor. The spaces offer open and flexible floor plans with high ceilings and expansive storefronts lining both Main and 9th Streets.

Please contact us if you'd like more information or would like to schedule a tour.

AVAILABLE SUITES

<u>Suite #</u>	<u>Square Footage</u>	<u>Description</u>	<u>Lease Rate</u>
Suite 100	3,180 SF	Shell Space	Call Broker



Lee & Associates Commercial Real Estate Services, Inc. - Riverside | 4193 Flat Rock Drive, Suite 100, Riverside, CA 92505 | Corporate DRE #01048055
Contact Broker's: Rich Erickson, DRE #01219183 | Andrew Peake, DRE #01398894

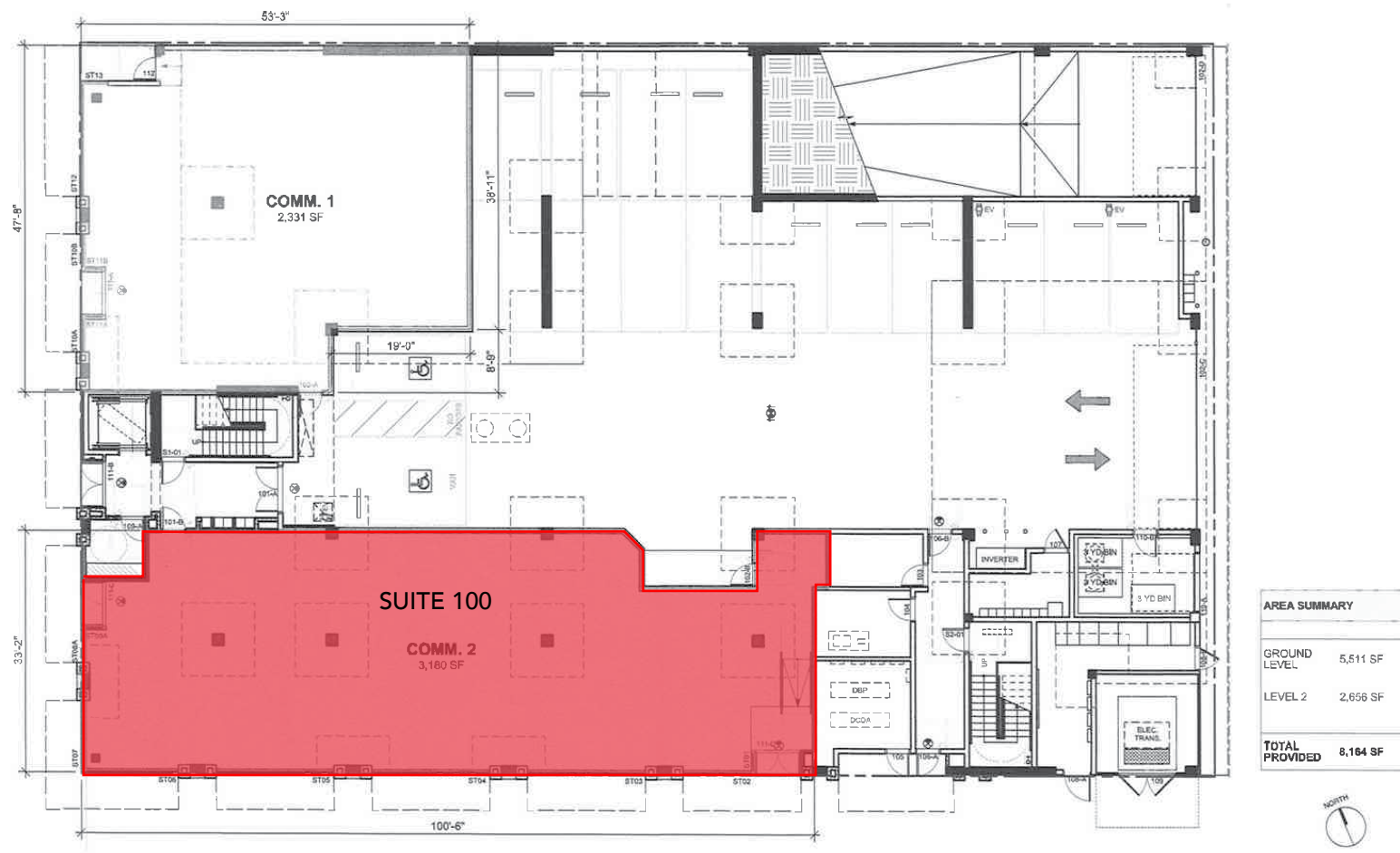
All information furnished regarding property for sale, rental or financing is from sources deemed reliable, but no warranty or representation is made to the accuracy thereof and same is submitted to errors, omissions, change of price, rental or other conditions prior to sale, lease or financing or withdrawal without notice. No liability of any kind is to be imposed on the broker herein.



CREATIVE OFFICE SPACE IN DOWNTOWN RIVERSIDE

3870 MAIN STREET | RIVERSIDE, CA

SUITE 100





CREATIVE OFFICE SPACE IN DOWNTOWN RIVERSIDE



Lee & Associates Commercial Real Estate Services, Inc. - Riverside | 4193 Flat Rock Drive, Suite 100, Riverside, CA 92505 | Corporate DRE #01048055
Contact Broker's: Rich Erickson, DRE #01219183 | Andrew Peake, DRE #01398894

All information furnished regarding property for sale, rental or financing is from sources deemed reliable, but no warranty or representation is made to the accuracy thereof and same is submitted to errors, omissions, change of price, rental or other conditions prior to sale, lease or financing or withdrawal without notice. No liability of any kind is to be imposed on the broker herein.