

9,555 SF OFFICE ON 2.5 ACRES



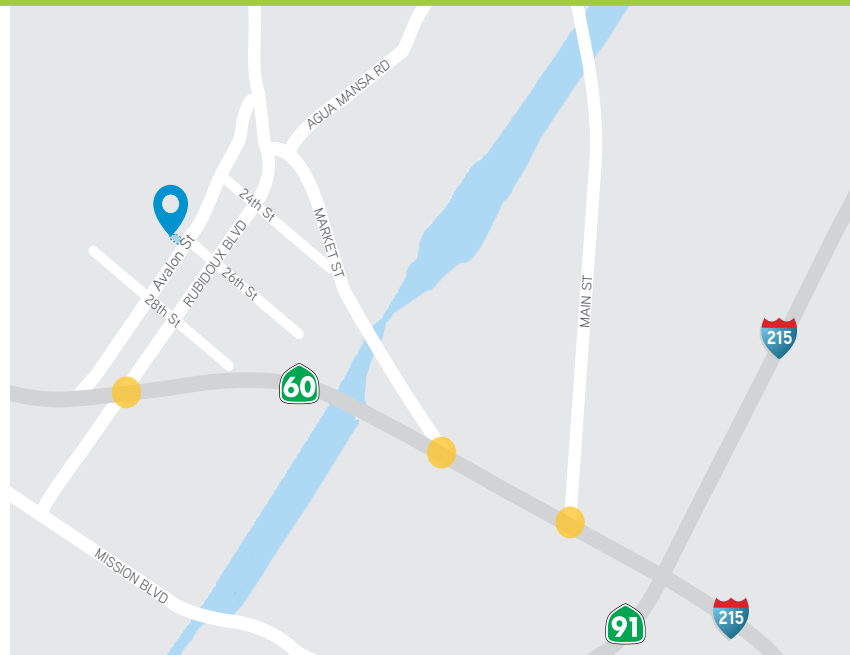
2625 AVALON STREET ■ JURUPA VALLEY, CA 92509

PROPERTY HIGHLIGHTS

- 9,555 SF of Recently Renovated Office/Showroom Space
- Abundant Parking- 8.7 per 1,000 SF Parking Ratio
- ± 1 Acre of Excess Land
- Manufacturing - Service Commercial (M-SC) Zoning
- Fenced and Gated, Lit Yard
- Partial Concrete Paving
- Immediate Access to 91, 60 & 215 Freeways

POTENTIAL PERMITTED USES

- Building Materials Sales Yard
- Machinery Sales, Rental & Storage
- Nurseries and Garden Supply
- Manufacturing
- Office
- Lumber Yard (CUP)
- RV/Boat Storage (CUP)
- [Full Permitted Use List](#)



Visit our listings at
www.McKennaIndustrialTeam.com

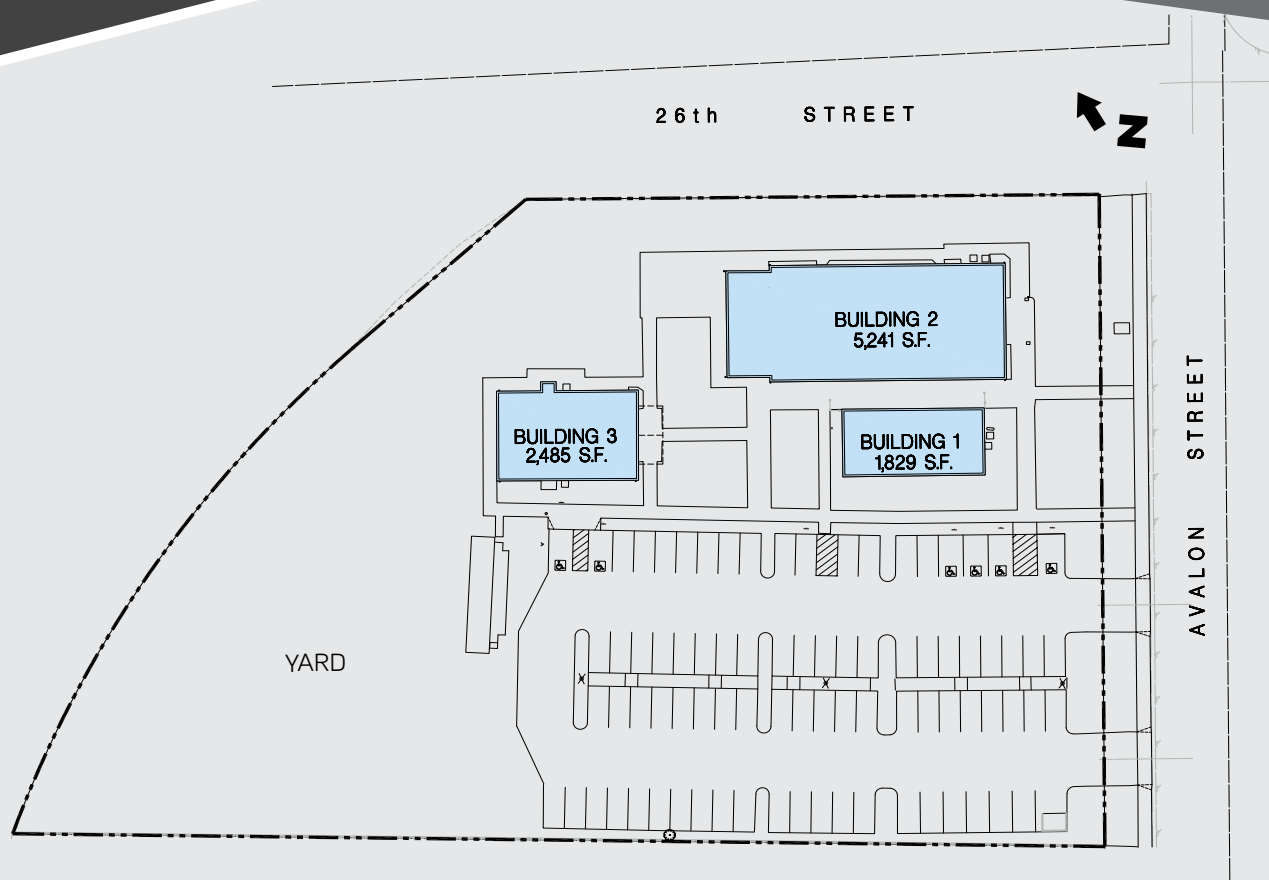
KEVIN MCKENNA
License No. 00887289
kevin.mckenna@colliers.com

(949) 300 0084

COLLIERS INTERNATIONAL
2855 E. Guasti Road, Suite
401 Ontario, CA 91761



9,555 SF OFFICE ON 2.5 ACRES



KEVIN MCKENNA
License No. 00887289
kevin.mckenna@colliers.com

(909) 300 0084

COLLIERS INTERNATIONAL
2855 E. Guasti Road, Suite
401 Ontario, CA 91761

