



LEE & ASSOCIATES

ONTARIO



250

250 E RINCON STREET

CORONA, CALIFORNIA

MULTI-TENANT BUSINESS CENTER



PROPERTY FEATURES:

- » ±20,328 SF high-image 2-story office building
- » Free surface parking (3:85 ratio)
- » Newly renovated
- » Great location with easy freeway access to both the 91 and 15 freeways
- » Walking distance to the Corona Metro-Link Station
- » Abundant retail amenities adjacent to the property
- » Elevator served and recently renovated common area restrooms

For more information, please contact:

JOHN MARTIN

Lee & Associates - Ontario
office: 949.724.4701
john@lee-associates.com
DRE #: 01346629

CHRIS COYTE

Lee & Associates - Ontario
office: 909.373.2935
ccoyle@lee-assoc.com
DRE #: 01017328



LEE & ASSOCIATES® - ONTARIO | Corporate ID #00976995
3535 Inland Empire Blvd, Ontario, California 91764
☎ 909.989.7771 | 📠 909.944.8250 | www.lee-associates.com

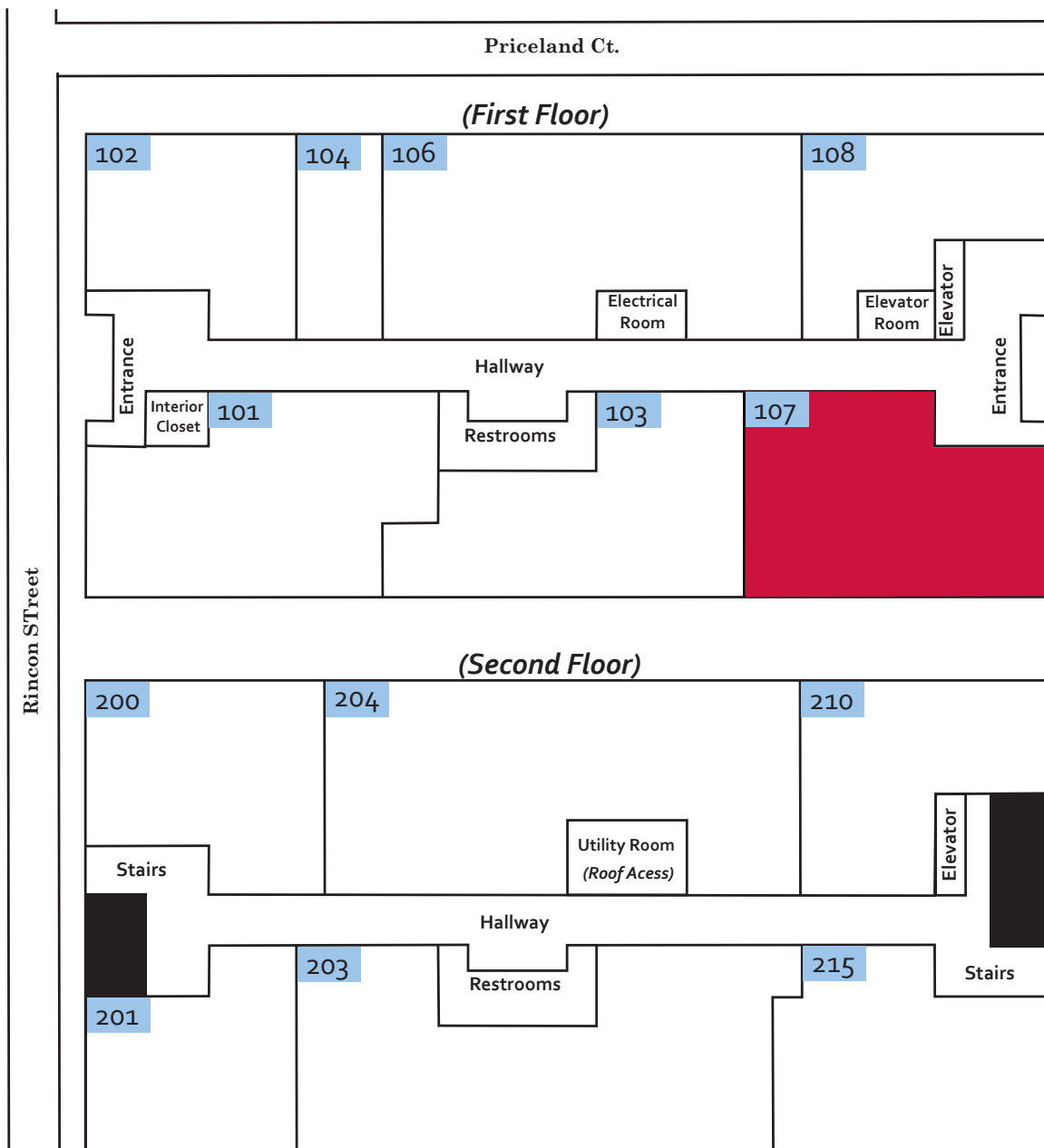
DISCLAIMER: The information contained herein has been obtained from the property owner or other third party and is provided to you without verification as to accuracy. We (Lee & Associates, its brokers, employees, agents, principals, officers, directors and affiliates) make no warranty or representation regarding the information, property, or transaction. You and your attorneys, advisors and consultants should conduct your own investigation of the property and transaction.



250 E RINCON STREET

CORONA, CALIFORNIA

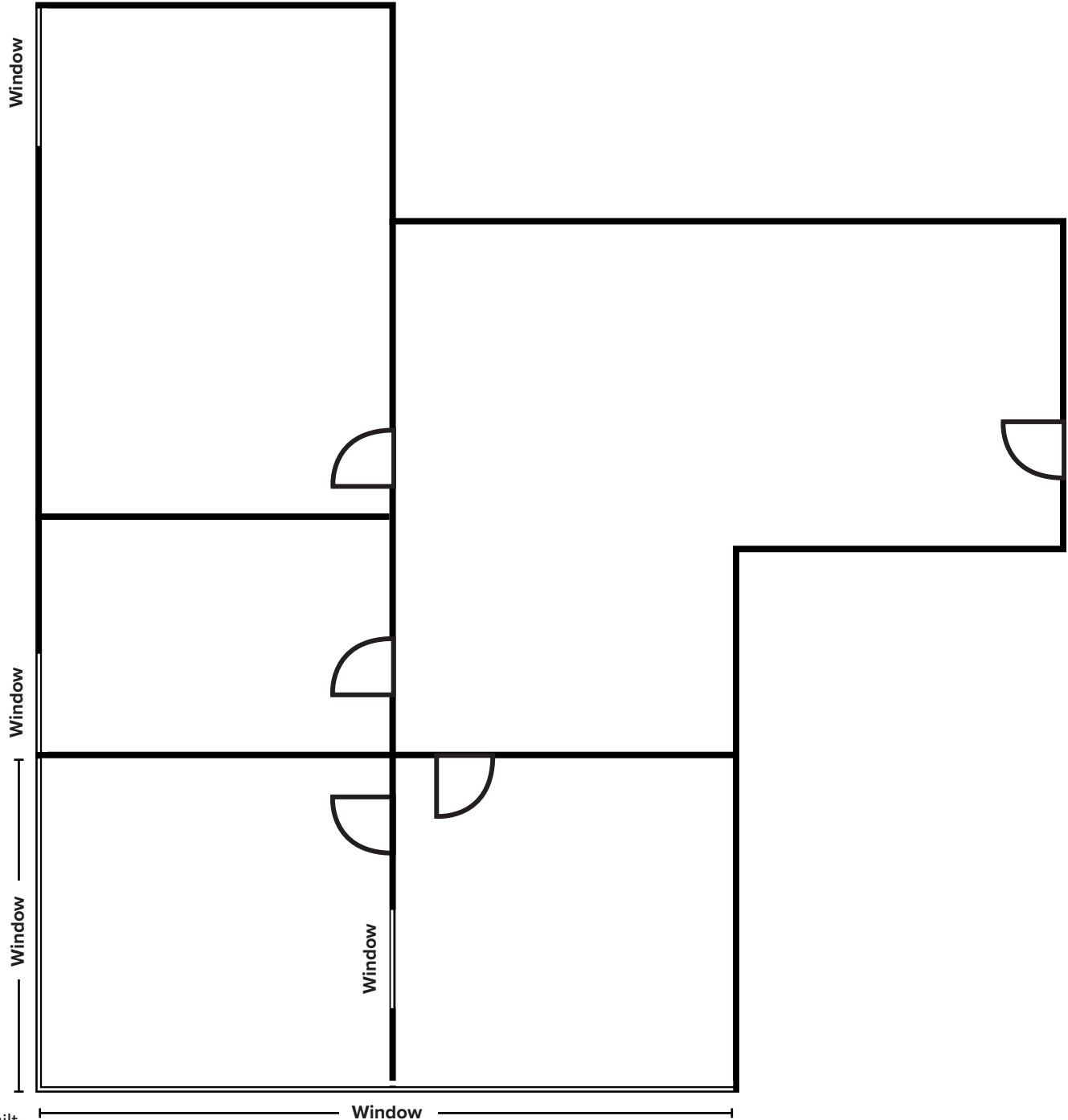
CURRENT AVAILABILITY			
ADDRESS	AVAILABLE SF	PRICE PSF	DATE AVAIL.
250 E. Rincon Street, Suite107	1,008	\$2.00	Now





250 E RINCON STREET #107

CORONA, CALIFORNIA



No to scale. Not as built

For more information, please contact:

JOHN MARTIN
 Lee & Associates - Ontario
 office: 949.724.4701
 john@lee-associates.com
 DRE #: 01346629

CHRIS COYTE
 Lee & Associates - Ontario
 office: 909.373.2935
 ccoyte@lee-assoc.com
 DRE #: 01017328



LEE & ASSOCIATES® - ONTARIO | Corporate ID #00976995
 3535 Inland Empire Blvd, Ontario, California 91764
 ☎ 909.989.7771 | 📠 909.944.8250 | www.lee-associates.com

DISCLAIMER: The information contained herein has been obtained from the property owner or other third party and is provided to you without verification as to accuracy. We (Lee & Associates, its brokers, employees, agents, principals, officers, directors and affiliates) make no warranty or representation regarding the information, property, or transaction. You and your attorneys, advisors and consultants should conduct your own investigation of the property and transaction.