

MISSION GROVE CORPORATE PLAZA



 **LEE &
ASSOCIATES**
COMMERCIAL REAL ESTATE SERVICES

THOMAS PIERIK, SIOR
Senior Vice President
951.276.3610
tpierik@leeriverside.com
DRE #00982027

RICH ERICKSON
Senior Vice President
951.276.3637
rich.erickson@leeriverside.com
DRE #01219183

7880 - 7898 MISSION GROVE PARKWAY S
RIVERSIDE, CA 92508

MISSION GROVE CORPORATE PLAZA

MISSION GROVE CORPORATE PLAZA AVAILABILITIES

Address	Suite	Sq. Ft.	Lease Rate	Description
7888	210	±4,713	\$2.25 PSF	Available

LEASE TYPE	Full Service Gross
RENT ADJUSTMENTS	Four Percent (4%) Per Year
LEASE TERM	Five (5) to Ten (10) Years
TENANT IMPROVEMENTS	Negotiable

7880 - 7898 MISSION GROVE PARKWAY S
RIVERSIDE, CA 92508

MISSION GROVE CORPORATE PLAZA

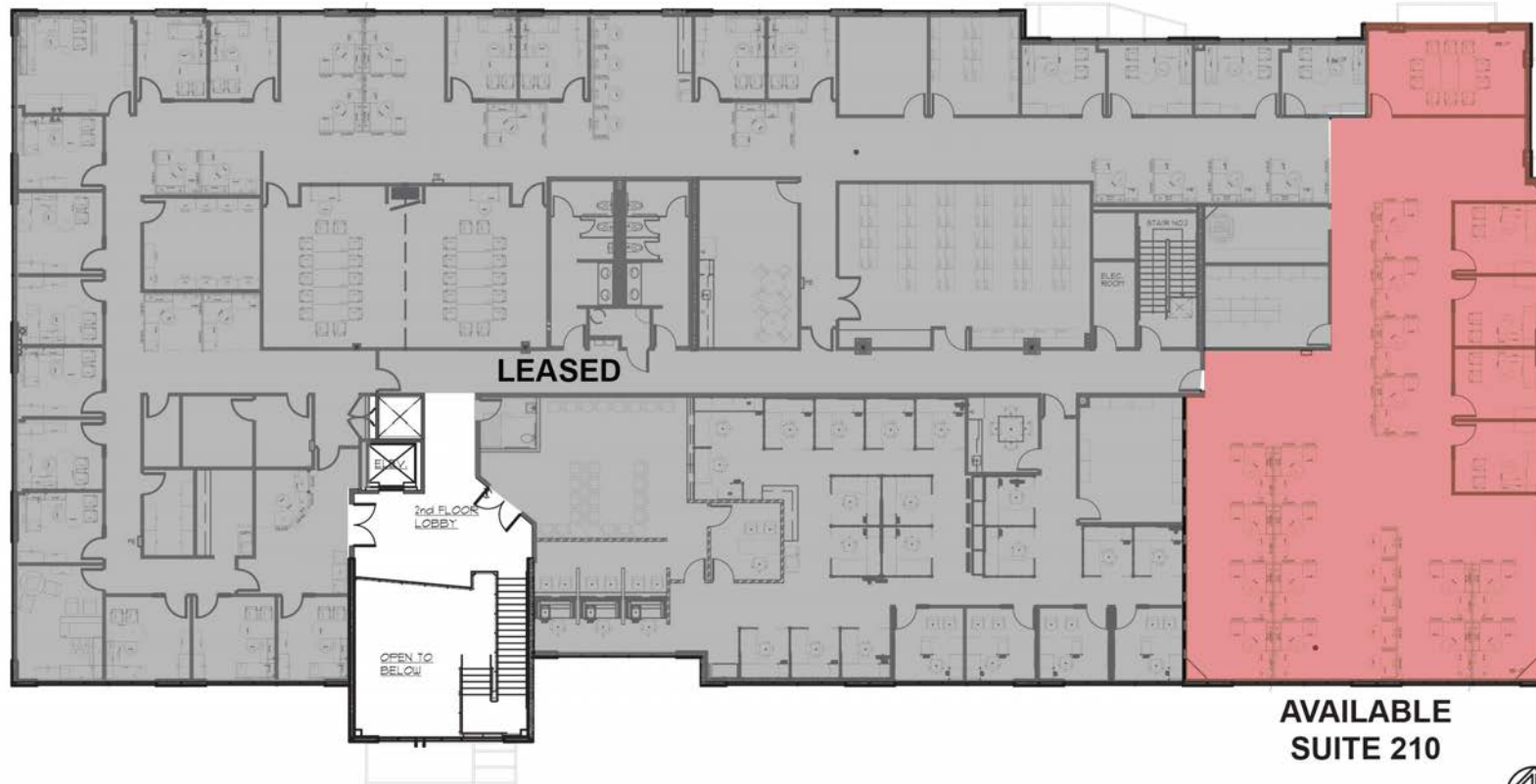
PROPERTY HIGHLIGHTS

- Professional Office Park with High Quality Construction with Class A Finishes
- Located in the Thriving Mission Grove Submarket in a Distinguished Area of East Riverside Near Retail, Schools, Parks, Businesses, and the Popular Residential Neighborhoods of Mission Grove, Orangecrest and Woodcrest
- Excellent Access to the I-215 Freeway Near CA-60/215 Interchange
- Expansive, Thriving Industrial Zone Nearby
- Well-Served by Public Transportation

7880 - 7898 MISSION GROVE PARKWAY S
RIVERSIDE, CA 92508

MISSION GROVE CORPORATE PLAZA

SECOND FLOOR - 7888 MISSION GROVE PKWY S



**AVAILABLE
SUITE 210**



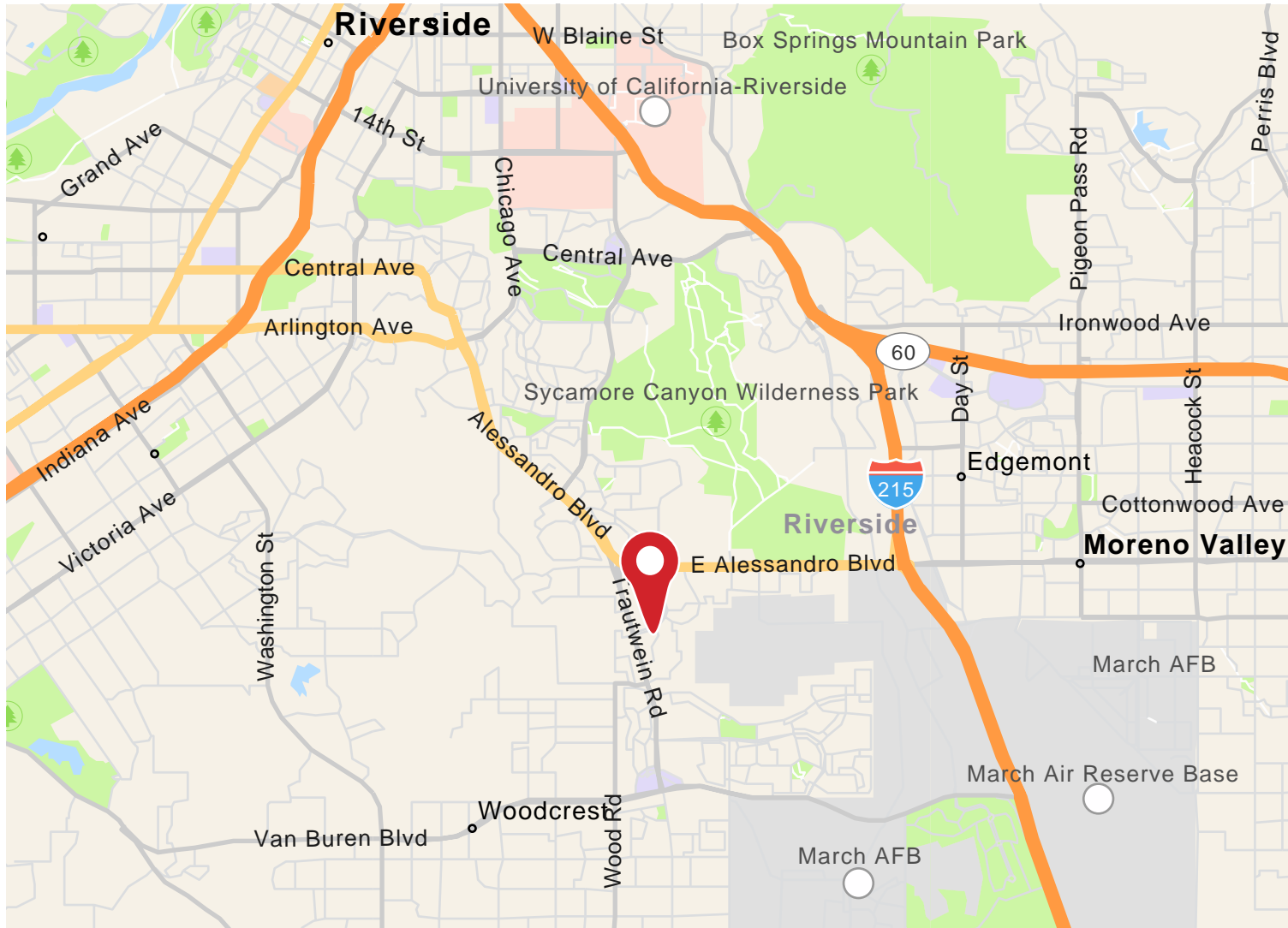
7880 - 7898 MISSION GROVE PARKWAY S
RIVERSIDE, CA 92508

MISSION GROVE CORPORATE PLAZA



7880 - 7898 MISSION GROVE PARKWAY S
RIVERSIDE, CA 92508

MISSION GROVE CORPORATE PLAZA



THOMAS PIERIK, SIOR

Senior Vice President
951.276.3610
tpierik@leeriverside.com
DRE #00982027

RICH ERICKSON

Senior Vice President
951.276.3637
rich.erickson@leeriverside.com
DRE #01219183