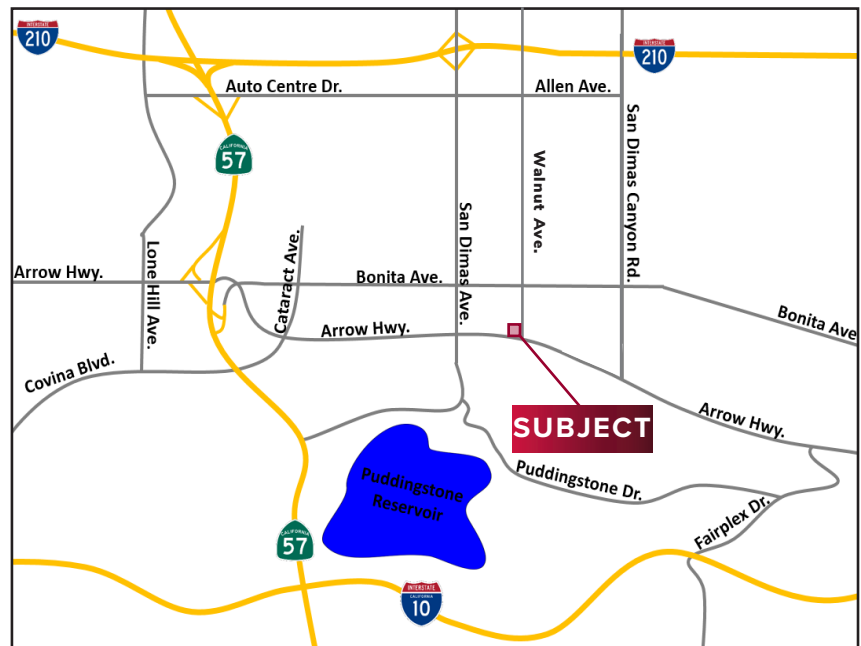


# Office Suites Available for Lease

±1,433 SF AVAILABLE  
279 E. Arrow Hwy., San Dimas, CA. 91773



- 4:1,000 Parking Ratio
- Covered Parking Available
- Elevator Served
- Arrow Highway Exposure
- Time Warner, Frontier Fios and AT&T Internet Available
- Great Freeway Access to the I-10, CA-210, CA-57, CA-71



**FOR MORE INFORMATION PLEASE CONTACT:**

**Justin Leewood**  
Senior Vice President/Principal  
909.373.2989  
jleewood@lee-assoc.com  
DRE #01837452

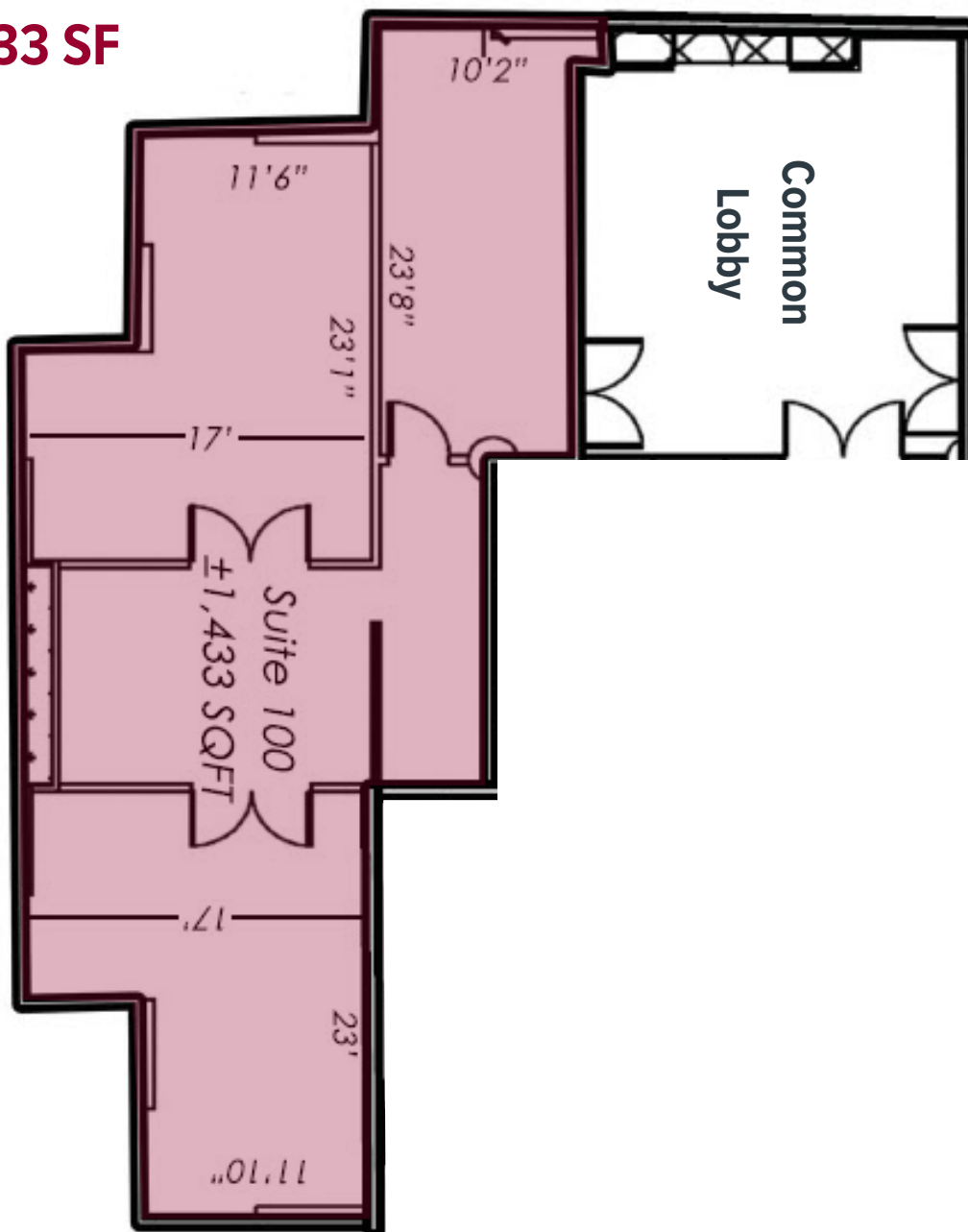
**Todd Launchbaugh**  
Senior Vice President/Principal  
909.373.2911  
tlaunchbaugh@lee-assoc.com  
DRE #01059250

**Lee & Associates® - Ontario**  
909.989.7771 | lee-assoc.com | Corp ID 00976995

All information furnished regarding property for sale, rental or financing is from sources deemed reliable, but no warranty or representation is made to the accuracy thereof and same is submitted to errors, omissions, change of price, rental or other conditions prior to sale, lease or financing or withdrawal without notice. No liability of any kind is to be imposed on the broker herein.

±1,433 SF AVAILABLE  
279 E. Arrow Hwy., San Dimas, CA. 91773

## SUITE 100 ±1,433 SF



FOR MORE INFORMATION PLEASE CONTACT:

**Justin Leewood**  
Senior Vice President/Principal  
909.373.2989  
jleewood@lee-assoc.com  
DRE #01837452

**Todd Launchbaugh**  
Senior Vice President/Principal  
909.373.2911  
tlaunchbaugh@lee-assoc.com  
DRE #01059250

**Lee & Associates® - Ontario**  
909.989.7771 | lee-assoc.com | Corp ID 00976995

All information furnished regarding property for sale, rental or financing is from sources deemed reliable, but no warranty or representation is made to the accuracy thereof and same is submitted to errors, omissions, change of price, rental or other conditions prior to sale, lease or financing or withdrawal without notice. No liability of any kind is to be imposed on the broker herein.