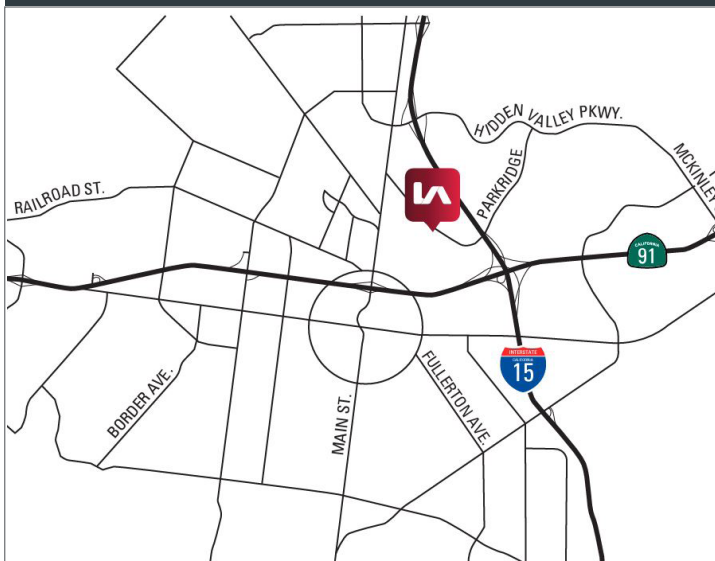




## PARKRIDGE TECHNOLOGY CENTER CORONA, CA

**±815 - 4,404 SF  
MULTI-TENANT INDUSTRIAL PARK**



### PROPERTY FEATURES

- » Part of a master planned project
- » Part of a larger four (4) building master planned project
- » Newly renovated
- » Great location with easy freeway access to both the 91 and 15 freeways
- » Walking distance to the Corona Metro-Link Station
- » Abundant retail amenities adjacent to the property

#### CHRIS COYTE

ccoyte@lee-assoc.com  
D 909.373.2935  
DRE # 01017328

#### JOHN MARTIN

jmartin@lee-assoc.com  
D 714.307.1250  
DRE # 01346629

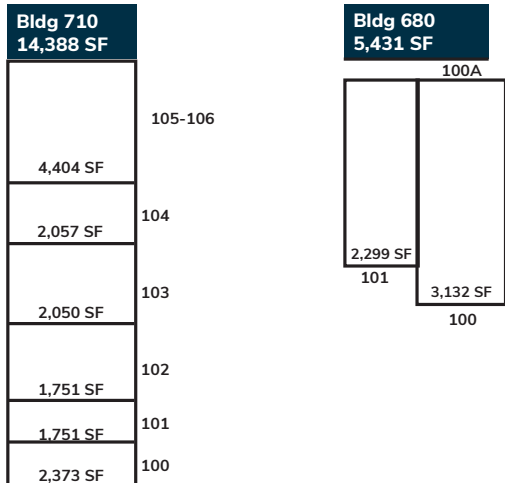
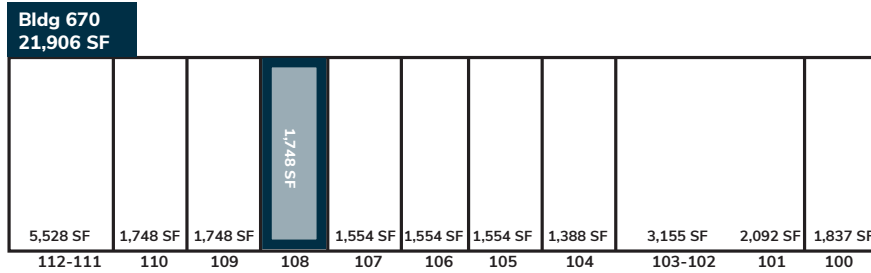
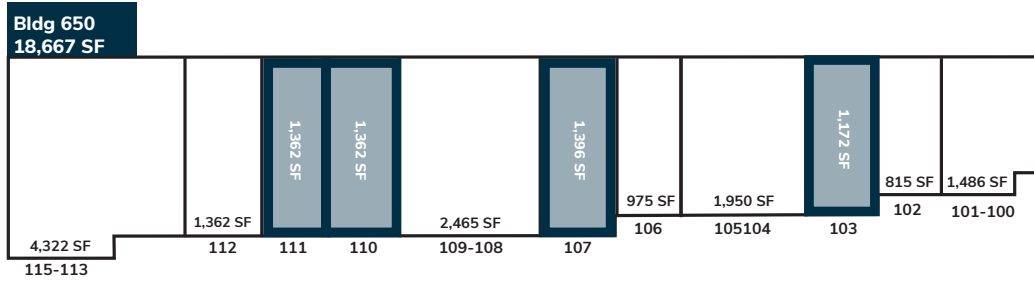
LEE & ASSOCIATES - ONTARIO  
3535 Inland Empire Boulevard | Ontario, CA 91764  
(909) 989-7771 | lee-associates.com  
Corporate ID: 00976995



DISCLAIMER: The information contained herein has been obtained from the property owner or other third party and is provided to you without verification as to accuracy. We (Lee & Associates, its brokers, employees, agents, principals, officers, directors and affiliates) make no warranty or representation regarding the information, property, or transaction. You and your attorneys, advisors and consultants should conduct your own investigation of the property and transaction.

# PARKRIDGE TECHNOLOGY CENTER

## CORONA, CA



### CURRENT AVAILABILITY

ADDRESS	AVAILABLE SF	OFFICE SF	PRICE PSF	CAM FEE
650 E. Parkridge, Suite 103	±1,172 SF	±1,172 SF	\$1.65	\$0.08 PSF
650 E. Parkridge, Suite 107	±1,396 SF	±1,396 SF	\$1.65	\$0.08 PSF
650 E. Parkridge, Suite 110	±1,362 SF	±1,362 SF	\$1.65	\$0.08 PSF
650 E. Parkridge, Suite 111	±1,362 SF	±1,362 SF	\$1.65	\$0.08 PSF
670 E. Parkridge, Suite 108	±1,748 SF	±700	\$1.65	\$0.08 PSF

**CHRIS COYTE**  
ccoyte@lee-assoc.com  
D 909.373.2935  
DRE # 01017328

**JOHN MARTIN**  
jmartin@lee-assoc.com  
D 714.307.1250  
DRE # 01346629

LEE & ASSOCIATES - ONTARIO  
3535 Inland Empire Boulevard | Ontario, CA 91764  
(909) 989-7771 | lee-associates.com  
Corporate ID: 00976995



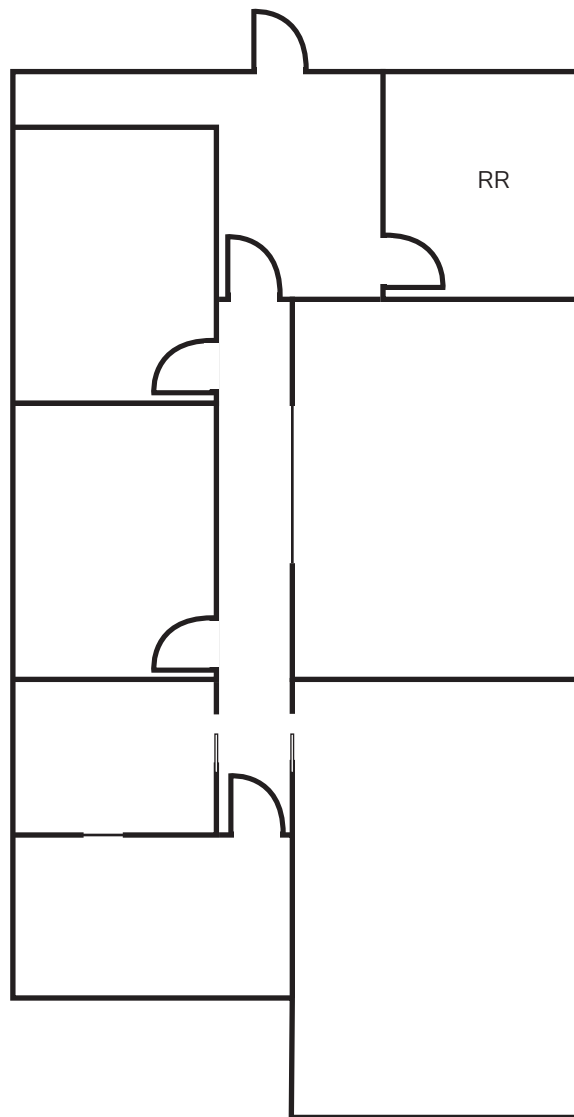
DISCLAIMER: The information contained herein has been obtained from the property owner or other third party and is provided to you without verification as to accuracy. We (Lee & Associates, its brokers, employees, agents, principals, officers, directors and affiliates) make no warranty or representation regarding the information, property, or transaction. You and your attorneys, advisors and consultants should conduct your own investigation of the property and transaction.

# PARKRIDGE TECHNOLOGY CENTER

CORONA, CA



650 E. Parkridge, Suite 103



**CHRIS COYTE**  
ccoyte@lee-assoc.com  
**D 909.373.2935**  
DRE # 01017328

**JOHN MARTIN**  
jmartin@lee-assoc.com  
**D 714.307.1250**  
DRE # 01346629

LEE & ASSOCIATES - ONTARIO  
3535 Inland Empire Boulevard | Ontario, CA 91764  
(909) 989-7771 | lee-associates.com  
Corporate ID: 00976995

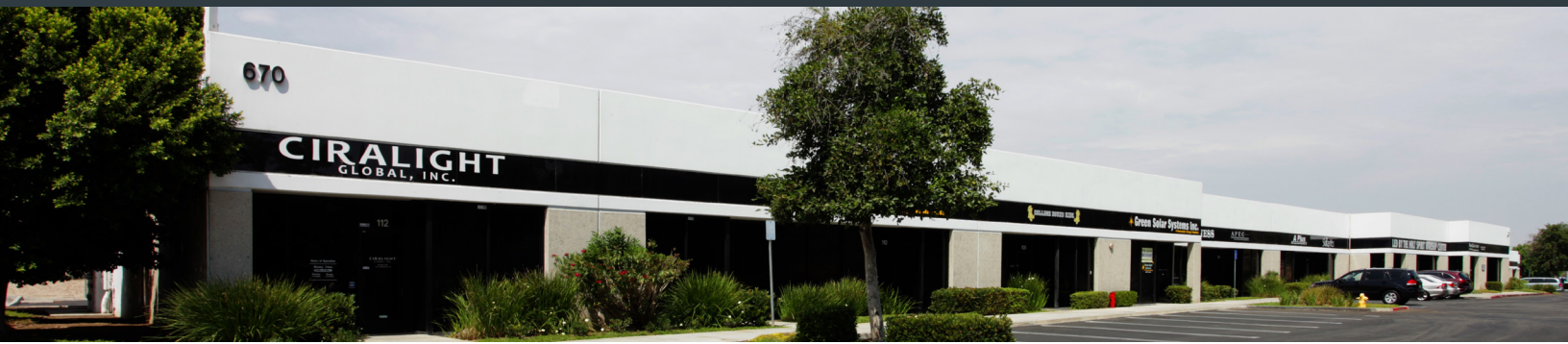
**LEE & ASSOCIATES**  
COMMERCIAL REAL ESTATE SERVICES

DISCLAIMER: The information contained herein has been obtained from the property owner or other third party and is provided to you without verification as to accuracy. We (Lee & Associates, its brokers, employees, agents, principals, officers, directors and affiliates) make no warranty or representation regarding the information, property, or transaction. You and your attorneys, advisors and consultants should conduct your own investigation of the property and transaction.

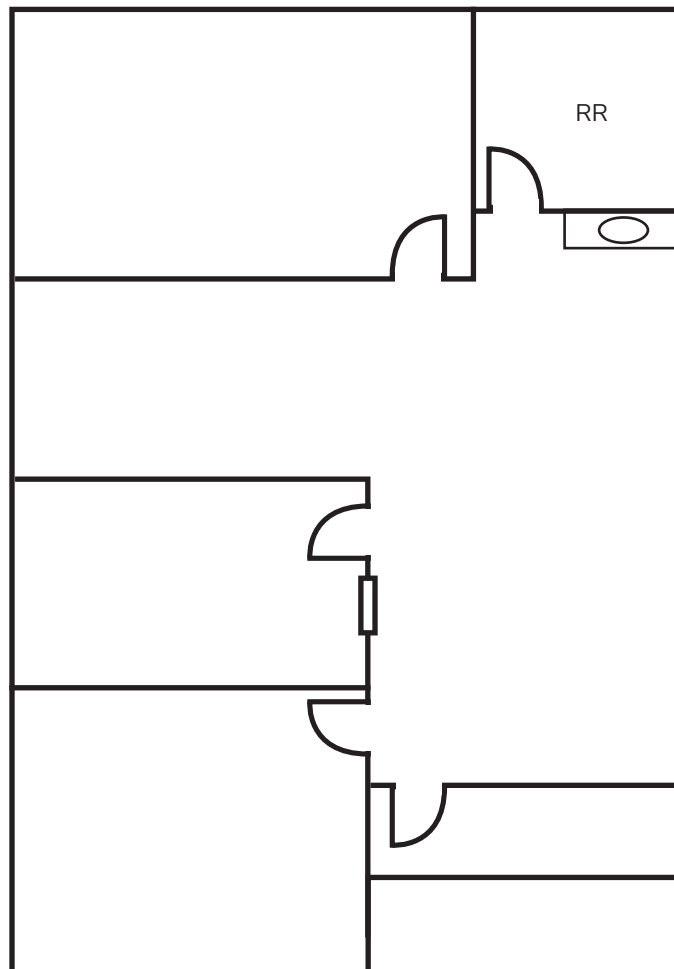


# PARKRIDGE TECHNOLOGY CENTER

CORONA, CA



650 E. Parkridge, Suite 107



**CHRIS COYTE**  
ccoyle@lee-assoc.com  
**D 909.373.2935**  
DRE # 01017328

**JOHN MARTIN**  
jmartin@lee-assoc.com  
**D 714.307.1250**  
DRE # 01346629

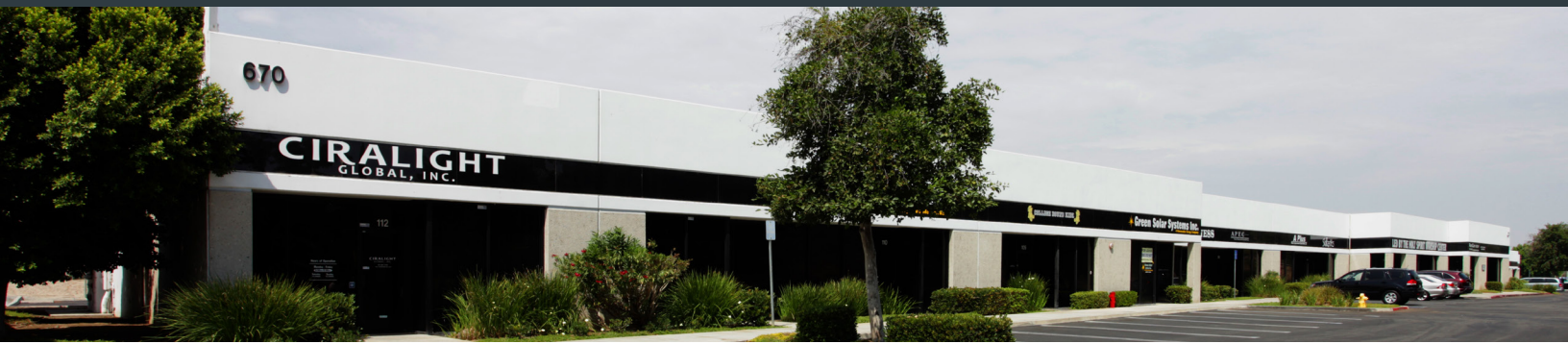
LEE & ASSOCIATES - ONTARIO  
3535 Inland Empire Boulevard | Ontario, CA 91764  
(909) 989-7771 | lee-associates.com  
Corporate ID: 00976995

**LEE & ASSOCIATES**  
COMMERCIAL REAL ESTATE SERVICES

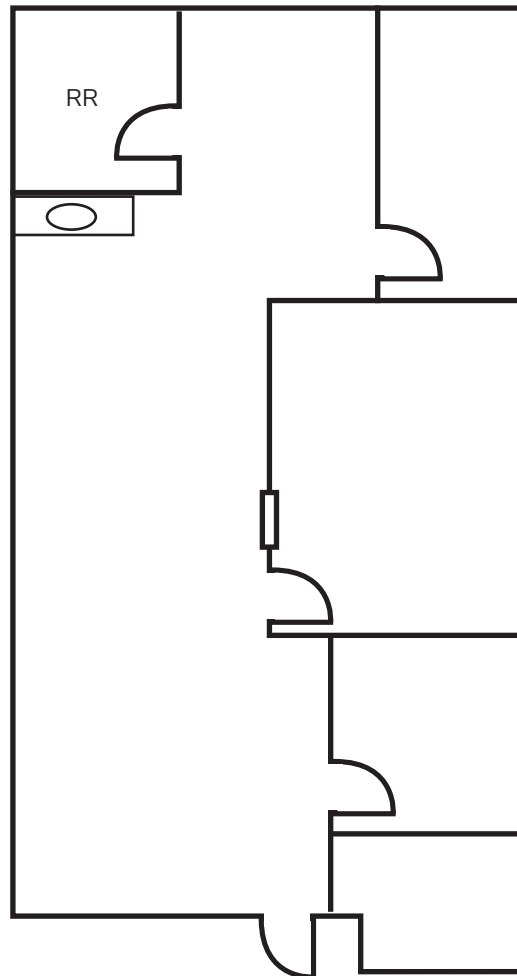
DISCLAIMER: The information contained herein has been obtained from the property owner or other third party and is provided to you without verification as to accuracy. We (Lee & Associates, its brokers, employees, agents, principals, officers, directors and affiliates) make no warranty or representation regarding the information, property, or transaction. You and your attorneys, advisors and consultants should conduct your own investigation of the property and transaction.

# PARKRIDGE TECHNOLOGY CENTER

CORONA, CA



650 E. Parkridge, Suite 110



**CHRIS COYTE**  
ccoyle@lee-assoc.com  
**D 909.373.2935**  
DRE # 01017328

**JOHN MARTIN**  
jmartin@lee-assoc.com  
**D 714.307.1250**  
DRE # 01346629

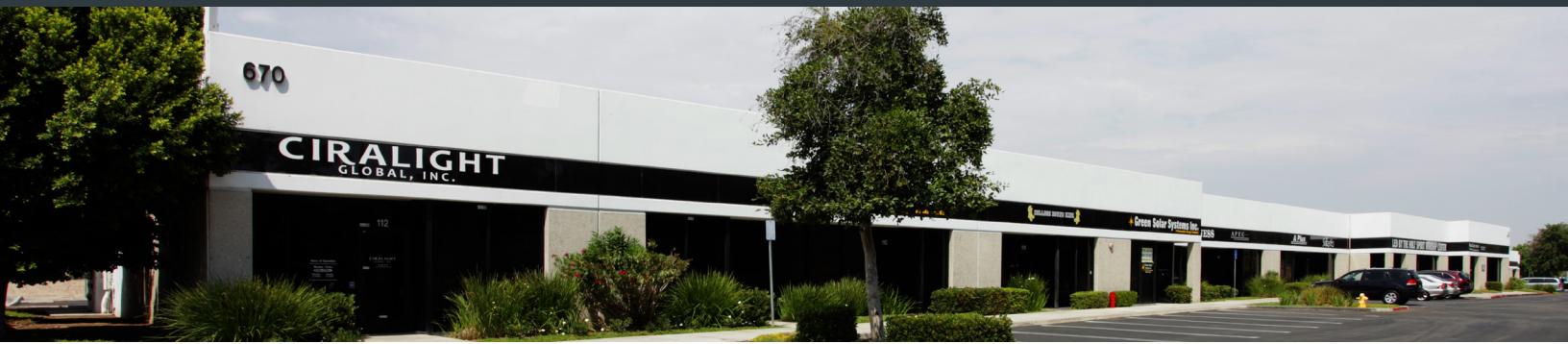
LEE & ASSOCIATES - ONTARIO  
3535 Inland Empire Boulevard | Ontario, CA 91764  
(909) 989-7771 | lee-associates.com  
Corporate ID: 00976995

**LEE & ASSOCIATES**  
COMMERCIAL REAL ESTATE SERVICES

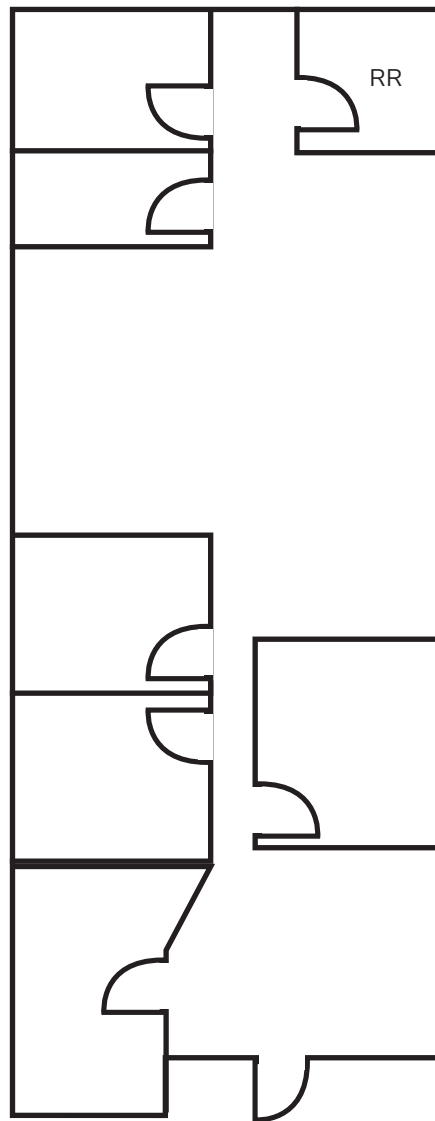
DISCLAIMER: The information contained herein has been obtained from the property owner or other third party and is provided to you without verification as to accuracy. We (Lee & Associates, its brokers, employees, agents, principals, officers, directors and affiliates) make no warranty or representation regarding the information, property, or transaction. You and your attorneys, advisors and consultants should conduct your own investigation of the property and transaction.

# PARKRIDGE TECHNOLOGY CENTER

CORONA, CA



650 E. Parkridge, Suite 111



**CHRIS COYTE**  
ccoyte@lee-assoc.com  
D 909.373.2935  
DRE # 01017328

**JOHN MARTIN**  
jmartin@lee-assoc.com  
D 714.307.1250  
DRE # 01346629

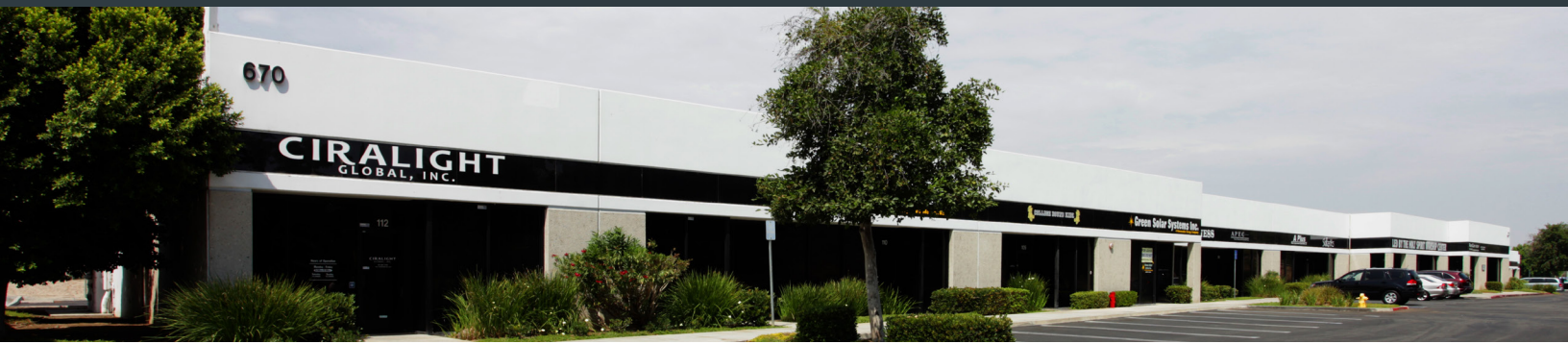
LEE & ASSOCIATES - ONTARIO  
3535 Inland Empire Boulevard | Ontario, CA 91764  
(909) 989-7771 | lee-associates.com  
Corporate ID: 00976995

**LEE & ASSOCIATES**  
COMMERCIAL REAL ESTATE SERVICES

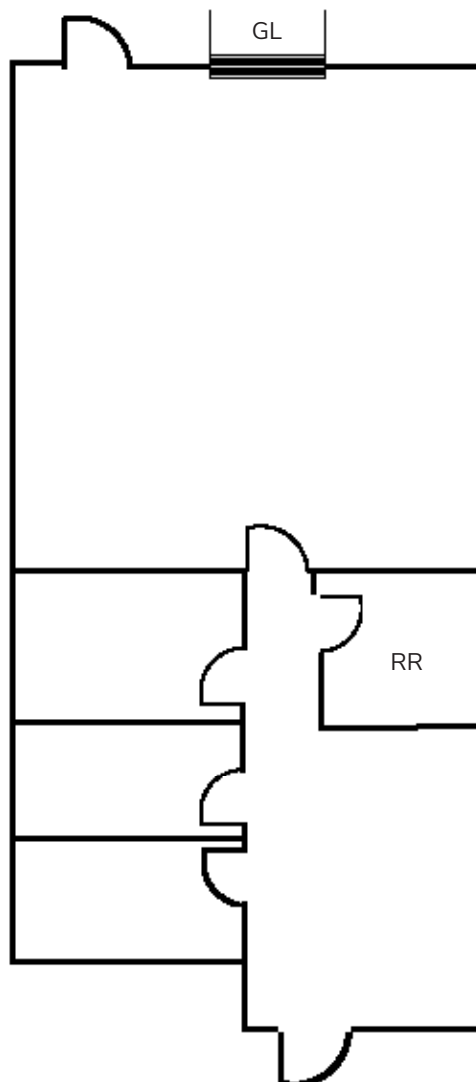
DISCLAIMER: The information contained herein has been obtained from the property owner or other third party and is provided to you without verification as to accuracy. We (Lee & Associates, its brokers, employees, agents, principals, officers, directors and affiliates) make no warranty or representation regarding the information, property, or transaction. You and your attorneys, advisors and consultants should conduct your own investigation of the property and transaction.

# PARKRIDGE TECHNOLOGY CENTER

CORONA, CA



670 E. Parkridge, Suite 108



**CHRIS COYTE**  
ccoyle@lee-assoc.com  
**D 909.373.2935**  
DRE # 01017328

**JOHN MARTIN**  
jmartin@lee-assoc.com  
**D 714.307.1250**  
DRE # 01346629

LEE & ASSOCIATES - ONTARIO  
3535 Inland Empire Boulevard | Ontario, CA 91764  
(909) 989-7771 | lee-associates.com  
Corporate ID: 00976995

**LEE & ASSOCIATES**  
COMMERCIAL REAL ESTATE SERVICES

DISCLAIMER: The information contained herein has been obtained from the property owner or other third party and is provided to you without verification as to accuracy. We (Lee & Associates, its brokers, employees, agents, principals, officers, directors and affiliates) make no warranty or representation regarding the information, property, or transaction. You and your attorneys, advisors and consultants should conduct your own investigation of the property and transaction.