

PLUM LANE EXECUTIVE SUITES | OFFICE SPACE FOR LEASE

1706 & 1710

PLUM LANE | REDLANDS, CA 92374



THOMAS P. PIERIK, SIOR

Senior Vice President
951.276.3610
tpierik@leeriverside.com
DRE #00982027

DAVID MUDGE, CCIM, SIOR

Senior Vice President
951.276.3611
dmudge@lee-associates.com
DRE #01070762

AVAILABILITIES

PLUM LANE EXECUTIVE SUITES

1706 PLUM LANE

Suite	Sq. Ft./Description	Lease Rate
FULLY LEASED		

1710 PLUM LANE

Suite	Sq. Ft./Description	Lease Rate
C	2,162 SF	\$1.80 PSF

LEASE TYPE	Full Service Gross
RENT ADJUSTMENTS	Three percent (3%) per year
LEASE TERM	One (1) to Five (5) years



PLUM LANE EXECUTIVE SUITES | OFFICE SPACE FOR LEASE

1706 & 1710

PLUM LANE | REDLANDS, CA 92374

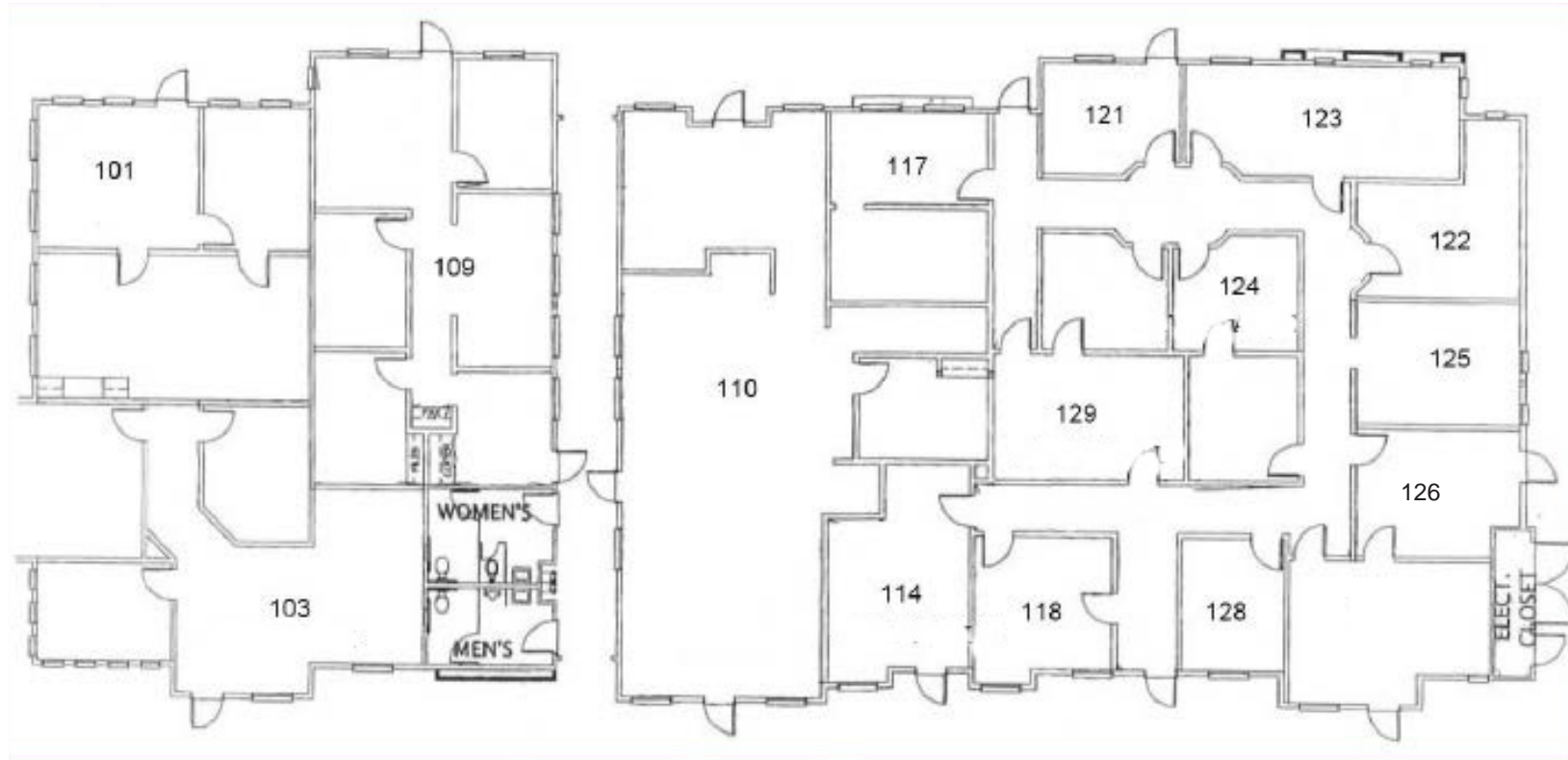
PROPERTY FEATURES

- ±16,277 square-foot single story professional office project
- Beautiful suites feature high ceilings, french doors, and other upgrades
- Small, executive suites available
- Highly desirable, freeway-adjacent location near Orange Tree Lane and major retail centers in Redlands
- Excellent street frontage and prominent exterior finishes
- Well-served by a number of restaurants, retail amenities, and business services
- Immediate access to the I-10 freeway
- Convenient parking right in front of your office



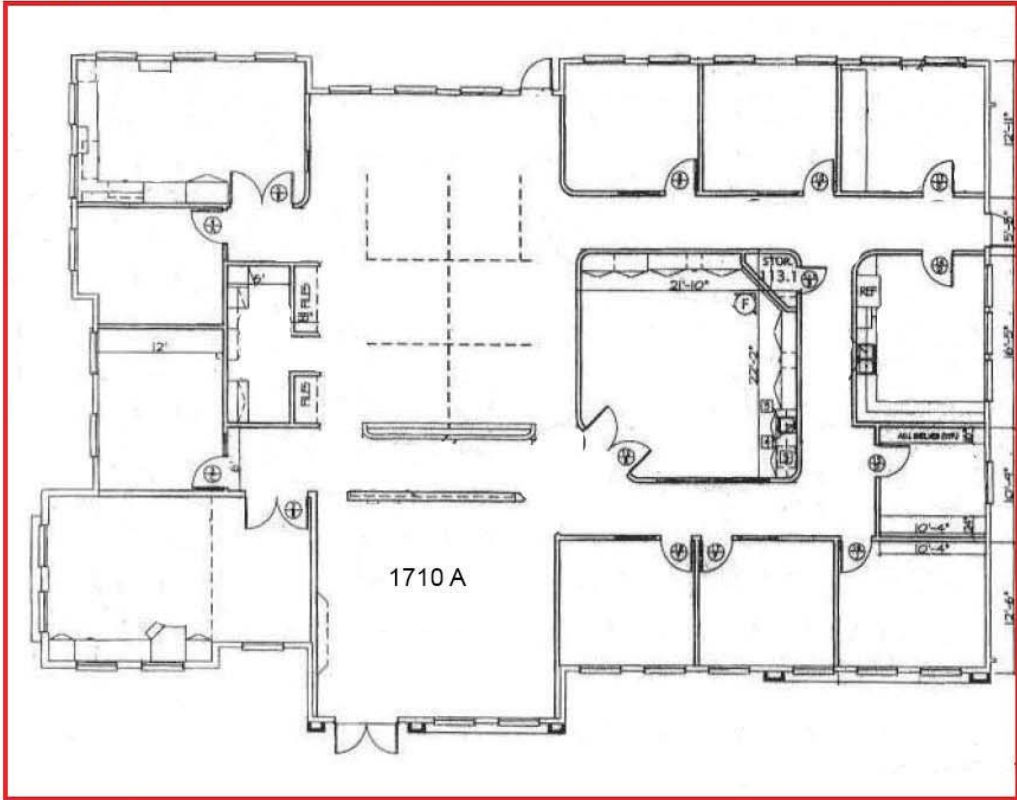
Contact Broker's: Thomas P. Pierik, SIOR, 951.276.3610, DRE #00982027
Dave Mudge, CCIM, SIOR, 951.276.3610, DRE #01070762

1706 FLOOR PLAN

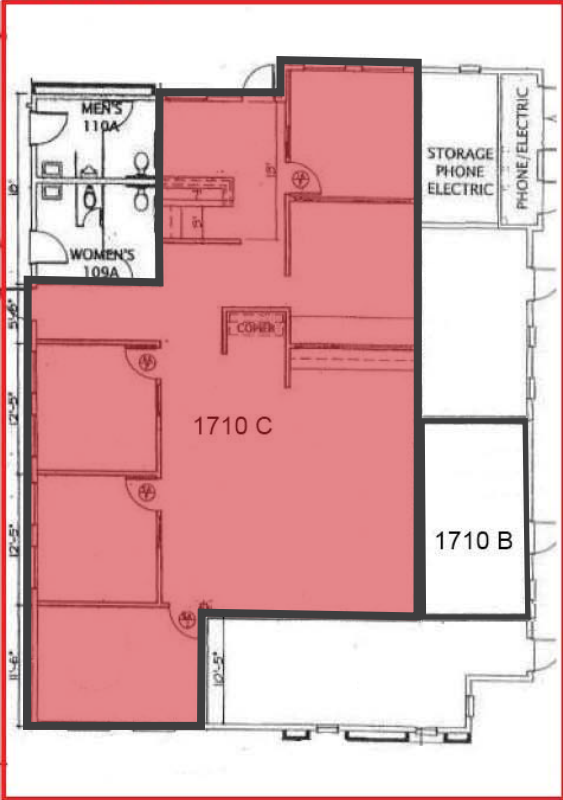


1710 FLOOR PLAN

Building C



Building A



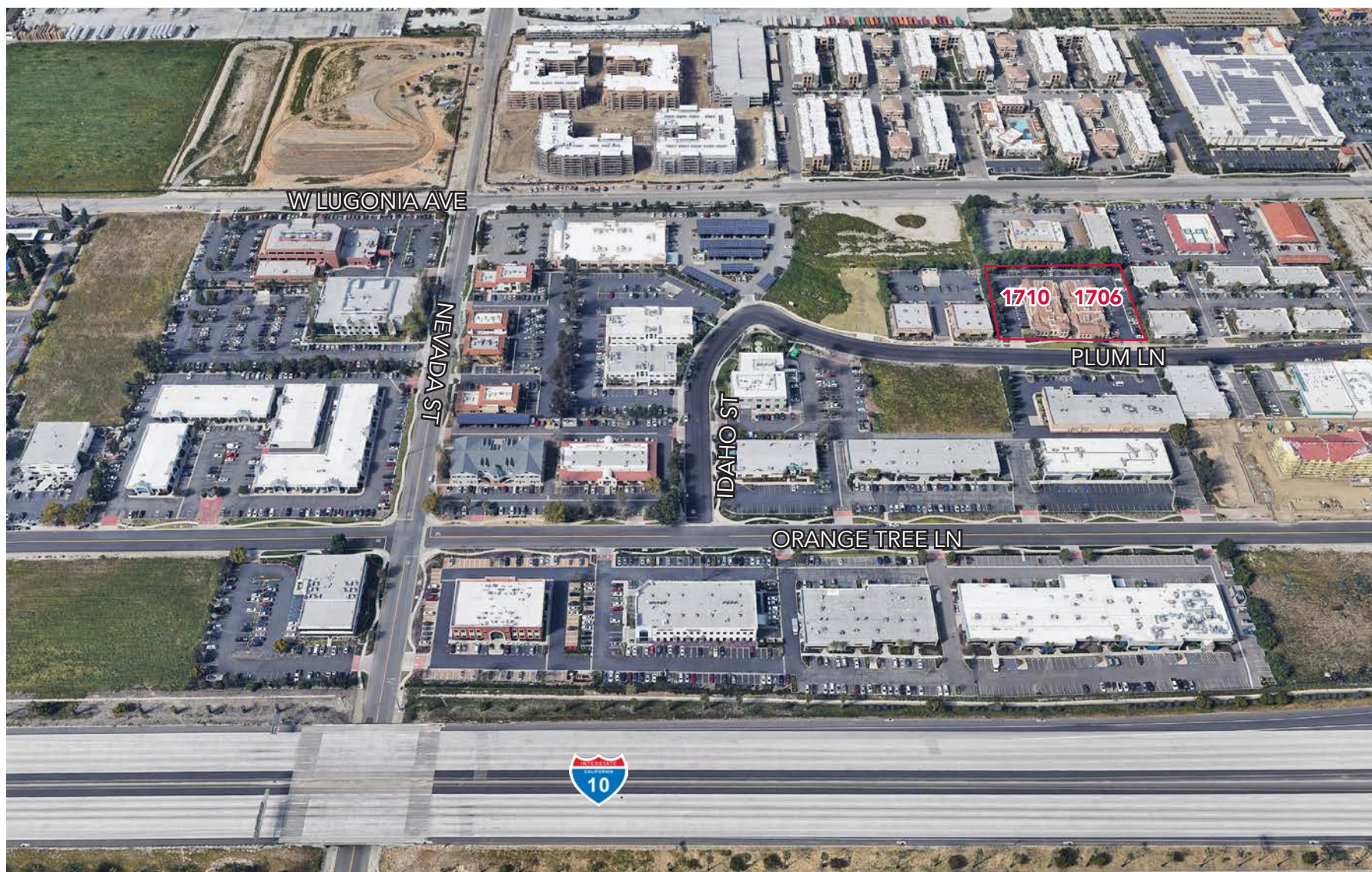
LOCATION



Contact Broker's:
Thomas P. Pierik, SIOR, 951.276.3610, DRE #00982027 | Dave Mudge, CCIM, SIOR, 951.276.3610, DRE #01070762

All information furnished regarding property for sale, rental or financing is from sources deemed reliable, but no warranty or representation is made to the accuracy thereof and same is submitted to errors, omissions, change of price, rental or other conditions prior to sale, lease or financing or withdrawal without notice. No liability of any kind is to be imposed on the broker herein. Corporate DRE 01048055

AERIAL



Contact Broker's:

Thomas P. Pierik, SIOR, 951.276.3610, DRE #00982027 | Dave Mudge, CCIM, SIOR, 951.276.3610, DRE #01070762

THOMAS P. PIERIK, SIOR

Senior Vice President
951.276.3610
tpierik@leeriverside.com
DRE #00982027

DAVE MUDGE, CCIM, SIOR

Senior Vice President
951.276.3611
dmudge@lee-associates.com
DRE #01070762

No warranty or representation has been made to the accuracy of the foregoing information. Terms of sale or lease and availability are subject to change or withdrawal without notice. Lee & Associates Commercial Real Estate Services, Inc. - Riverside
4193 Flat Rock Drive, Suite 100 - Riverside, CA 92505
Corporate DRE 01048055 | www.lee-associates.com