

AVAILABLE FOR SALE | LAST SUITE AVAILABLE

SUITE 301 | ±2,858 SQUARE FEET

ASKING \$850,000
(\$297.00 PSF)



PRIME MEDICAL PLAZA

510 N. 13TH AVENUE | UPLAND | CALIFORNIA

JEFF BISCHOFBERGER

Senior Vice President/Principal

jbischof@lee-assoc.com | 909.373.2708 | DRE# 01512151

GREG MARTIN

Senior Vice President/Principal

gmartin@lee-assoc.com | 909.373.2904 | DRE# 01001749

All information furnished regarding property for sale, rental or financing is from sources deemed reliable, but no warranty or representation is made to the accuracy thereof and same is submitted to errors, omissions, change of price, rental or other conditions prior to sale, lease or financing or withdrawal without notice. No liability of any kind is to be imposed on the broker herein.

510 N. 13TH AVE | SUITE 301

PROPERTY FEATURES

UPLAND • CALIFORNIA • 91786

- Fully Built Out Medical/Office Suites for Immediate Occupancy
- Rare Opportunity for Doctors to Own their Own Offices
- Newly Renovated Building
- High End Professional Common Areas
- Great Upland Location near San Antonio Hospital and City of Hope
- 0% Down Payment Possible



AVAILABLE FOR SALE | ±2,858 SQUARE FEET

JEFF BISCHOFBERGER

Senior Vice President/Principal

jbischof@lee-assoc.com | 909.373.2708 | DRE# 01512151

GREG MARTIN

Senior Vice President/Principal

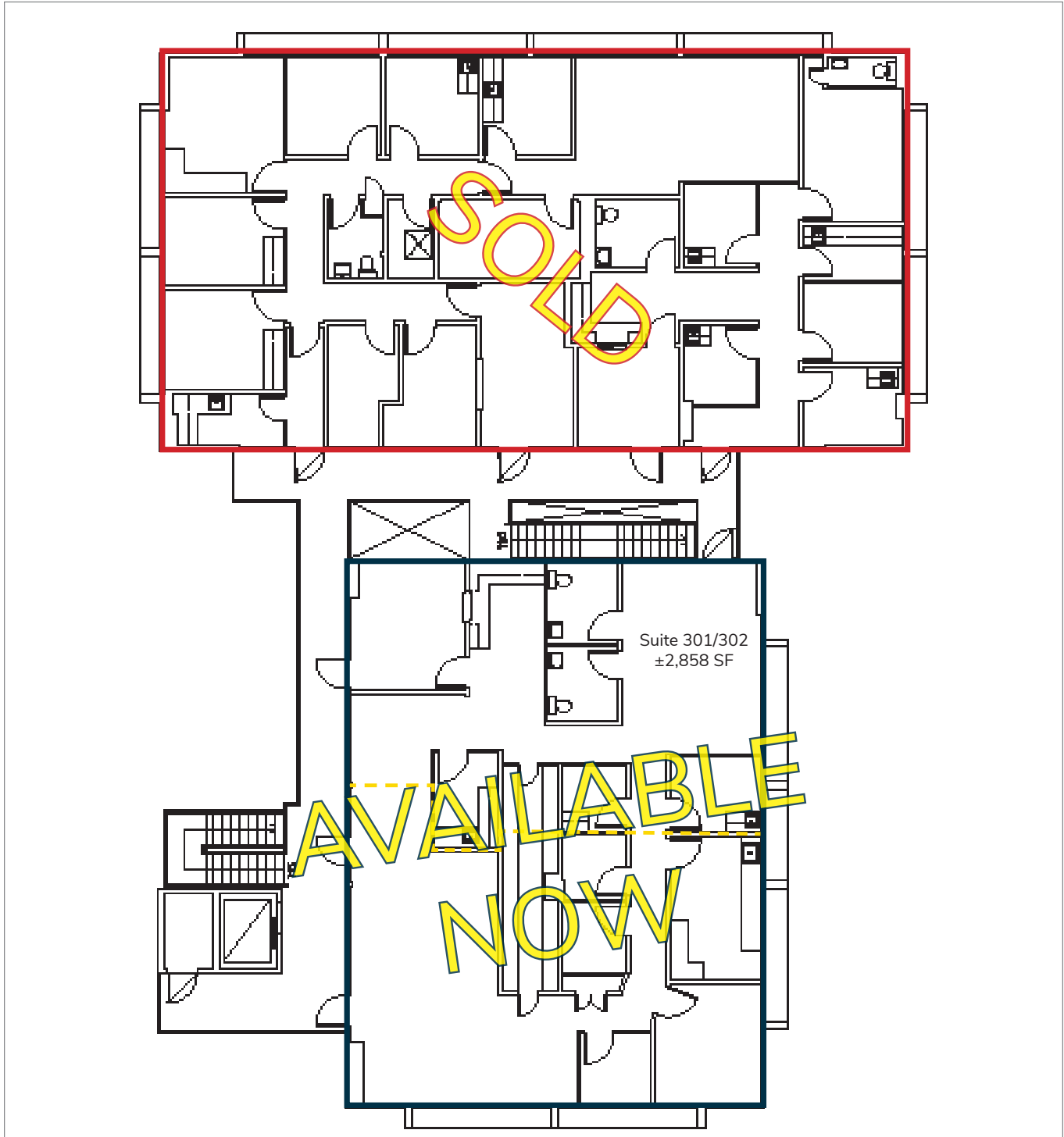
gmartin@lee-assoc.com | 909.373.2904 | DRE# 01001749

All information furnished regarding property for sale, rental or financing is from sources deemed reliable, but no warranty or representation is made to the accuracy thereof and same is submitted to errors, omissions, change of price, rental or other conditions prior to sale, lease or financing or withdrawal without notice. No liability of any kind is to be imposed on the broker herein.

510 N. 13TH AVE | SUITE 301

UPLAND • CALIFORNIA • 91786

THIRD FLOOR LAYOUT



AVAILABLE FOR SALE | ±2,858 SQUARE FEET

JEFF BISCHOFBERGER

Senior Vice President/Principal

jbischof@lee-assoc.com | 909.373.2708 | DRE# 01512151

GREG MARTIN

Senior Vice President/Principal

gmartin@lee-assoc.com | 909.373.2904 | DRE# 01001749

510 N. 13TH AVE | SUITE 301

PARKING GARAGES

UPLAND • CALIFORNIA • 91786

1	\$50,000
2	\$45,000
3	\$45,000
4	\$45,000
5	\$50,000
6	\$55,000
7	\$50,000
8	\$45,000
9	\$45,000
10	\$45,000
11	\$45,000
12	\$45,000
13	\$50,000



AVAILABLE FOR SALE | ±2,858 SQUARE FEET

JEFF BISCHOFBERGER

Senior Vice President/Principal

jbischof@lee-assoc.com | 909.373.2708 | DRE# 01512151

GREG MARTIN

Senior Vice President/Principal

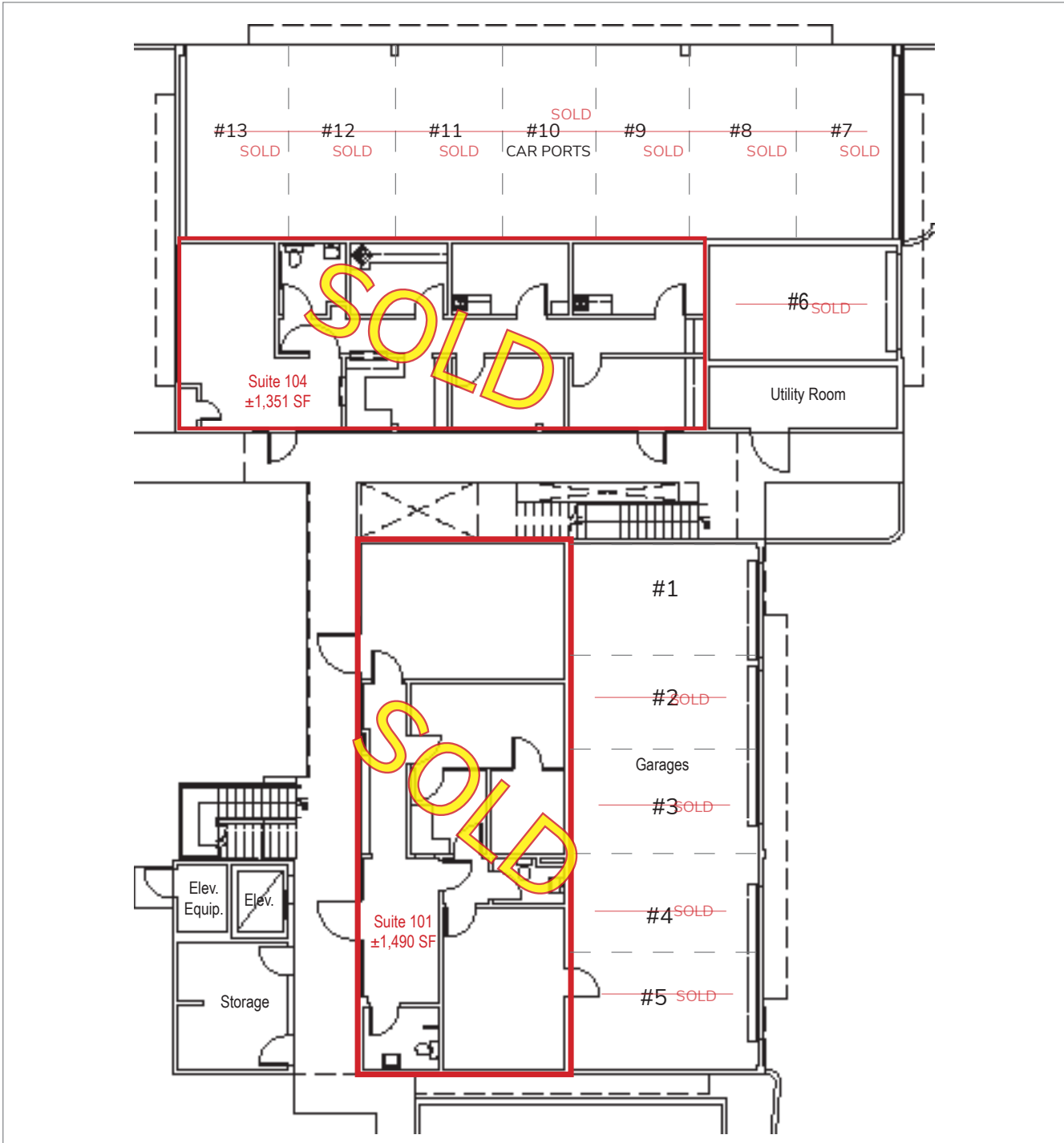
gmartin@lee-assoc.com | 909.373.2904 | DRE# 01001749

All information furnished regarding property for sale, rental or financing is from sources deemed reliable, but no warranty or representation is made to the accuracy thereof and same is submitted to errors, omissions, change of price, rental or other conditions prior to sale, lease or financing or withdrawal without notice. No liability of any kind is to be imposed on the broker herein.

510 N. 13TH AVE | SUITE 301

UPLAND • CALIFORNIA • 91786

PARKING GARAGES



AVAILABLE FOR SALE | ±2,858 SQUARE FEET

JEFF BISCHOFBERGER
Senior Vice President/Principal

jbischof@lee-assoc.com | 909.373.2708 | DRE# 01512151

GREG MARTIN
Senior Vice President/Principal

gmartin@lee-assoc.com | 909.373.2904 | DRE# 01001749