

IMMEDIATE AVAILABILITY FOR SUBLEASE

ONTARIO CORPORATE CENTER

430 North Vineyard Avenue | Ontario, CA 91764

**UP TO
40,000 SF**

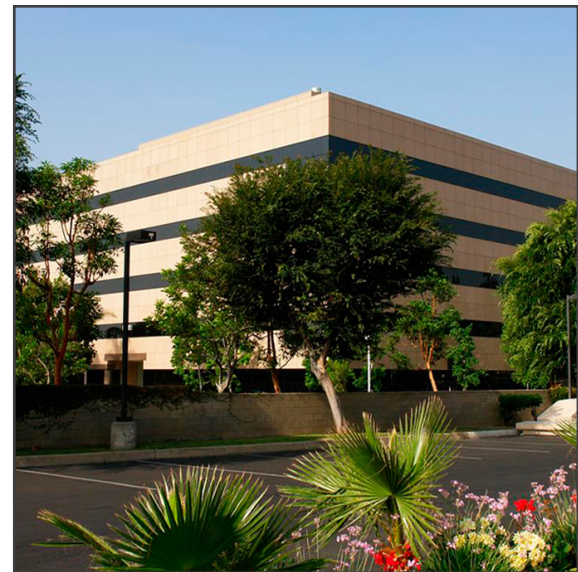
**SUBLEASE EXPIRES
9/30/2026**

**±9,048 SF EXPANDABLE TO ±40,000 SF
SUITES 400/420/500**



DISTINCTIVE OFFICE BUILDING FEATURES

- Available Sublease Space: Suite 400 (±10,469 SF), possible expansion to include Suite 420 (±9,048 SF) and Suite 500 (±20,057 SF) SF for a total of ±39,574 SF
- Sublease expires 9/30/2026
- Class A Building in Ontario has been completely renovated inside and out
- High image lobby
- Freeway visibility with signage opportunity
- 4/1,000 parking with potential for 5/1,000
- Located next to Ontario Convention Center, In-n-Out, and Double Tree Hilton Hotel
- Vineyard Avenue and the I-10 Freeway



THOMAS P. PIERIK, SIOR
(951)276-3610
tpierik@lee-associates.com
DRE #00982027

DAVID G. MUDGE, SIOR, CCIM
(951)276-3611
dmudge@lee-associates.com
DRE #01070762

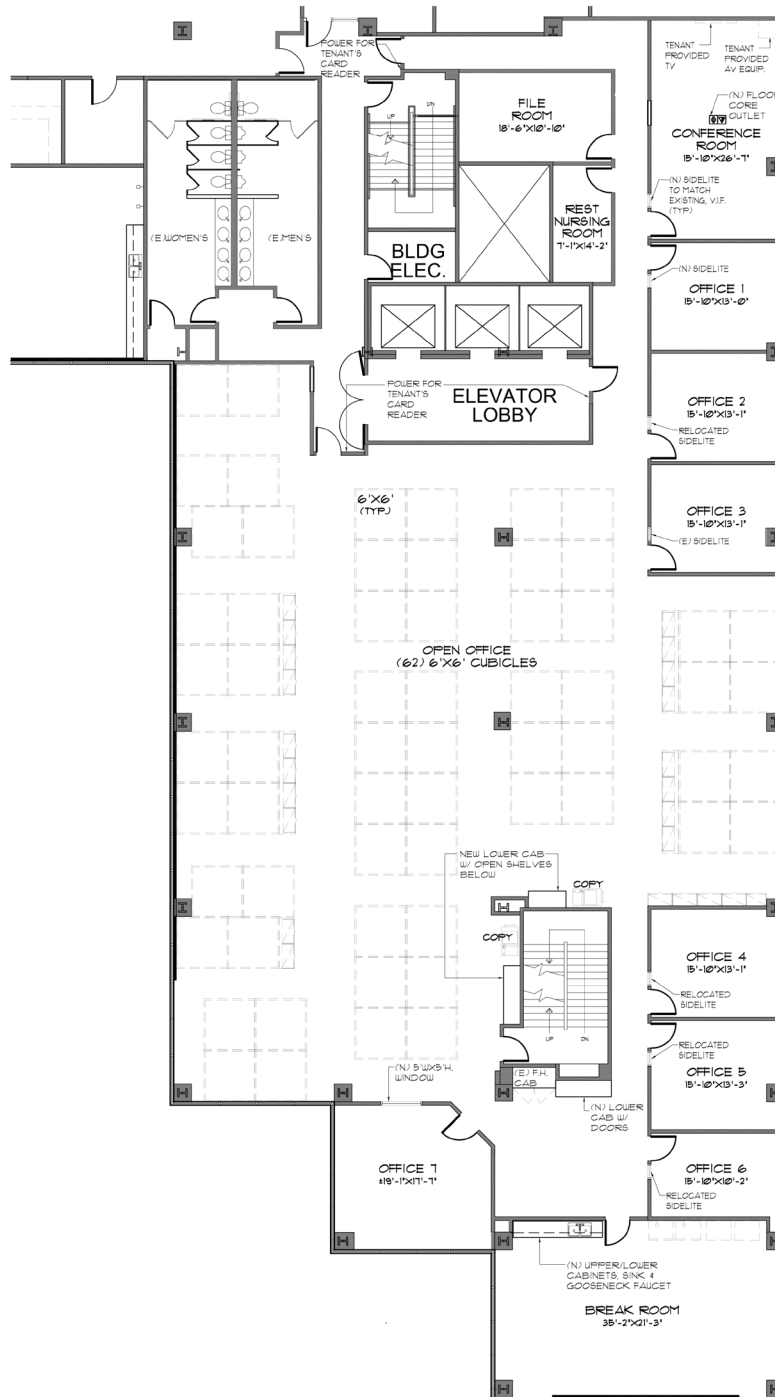
**LEE &
ASSOCIATES**
COMMERCIAL REAL ESTATE SERVICES

ONTARIO CORPORATE CENTER

Class A Office Space

430 North Vineyard Avenue | Ontario, CA 91764

AVAILABLE
Suite 400
±10,469 SF



THOMAS P. PIERIK, SIOR
(951)276-3610
tpierik@lee-associates.com
DRE #00982027

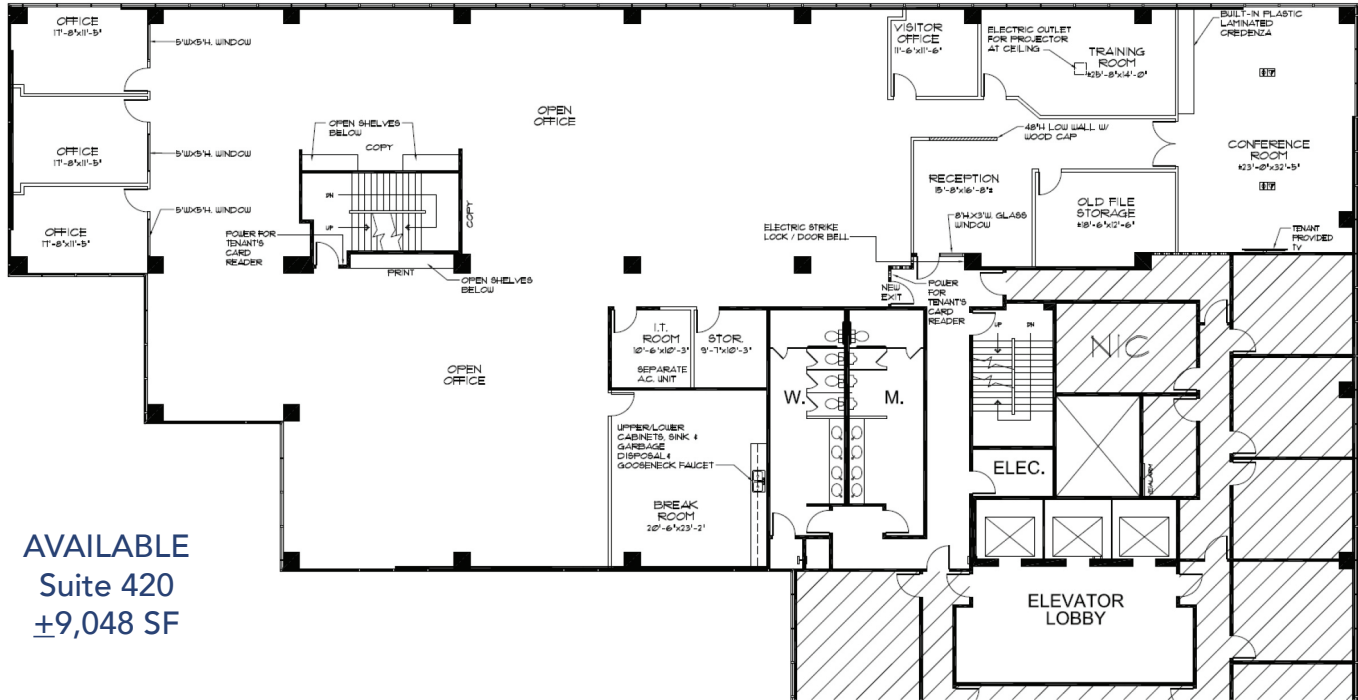
DAVID G. MUDGE, SIOR, CCIM
(951)276-3611
dmudge@lee-associates.com
DRE #01070762

LEE & ASSOCIATES
COMMERCIAL REAL ESTATE SERVICES

ONTARIO CORPORATE CENTER

Class A Office Space

430 North Vineyard Avenue | Ontario, CA 91764



AVAILABLE
Suite 420
±9,048 SF

THOMAS P. PIERIK, SIOR
(951)276-3610
tpierik@lee-associates.com
DRE #00982027

DAVID G. MUDGE, SIOR, CCIM
(951)276-3611
dmudge@lee-associates.com
DRE #01070762

LEE & ASSOCIATES
COMMERCIAL REAL ESTATE SERVICES

ONTARIO CORPORATE CENTER

Class A Office Space

430 North Vineyard Avenue | Ontario, CA 91764



THOMAS P. PIERIK, SIOR
(951)276-3610
tpierik@lee-associates.com
DRE #00982027

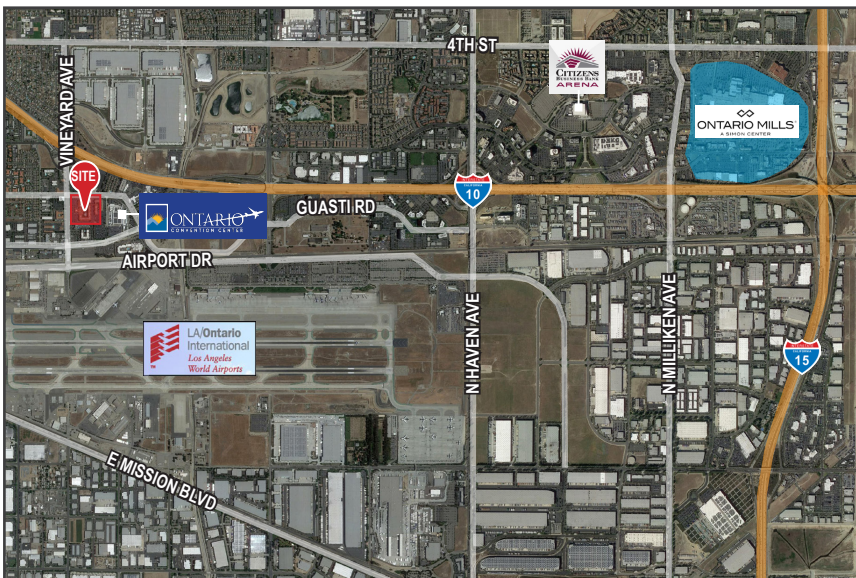
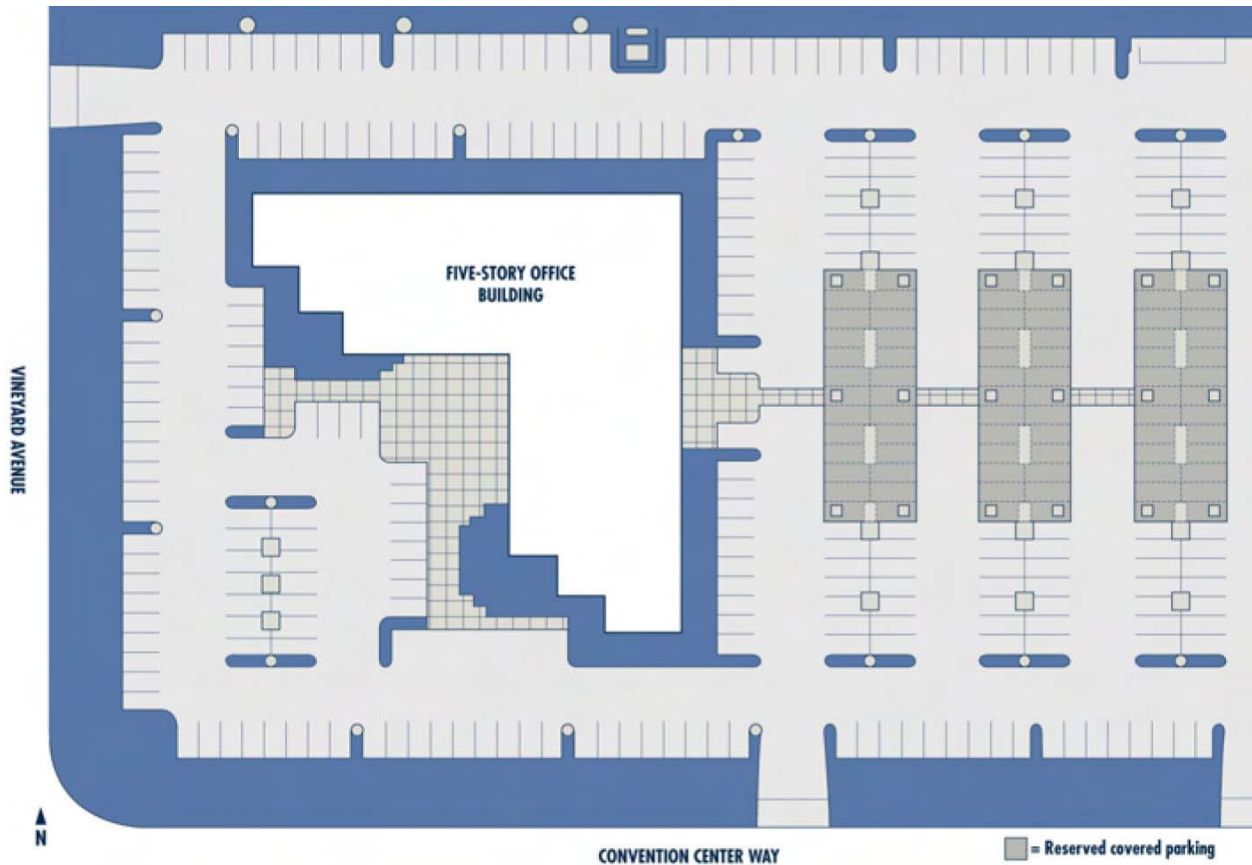
DAVID G. MUDGE, SIOR, CCIM
(951)276-3611
dmudge@lee-associates.com
DRE #01070762

LEE & ASSOCIATES
COMMERCIAL REAL ESTATE SERVICES

ONTARIO CORPORATE CENTER

Class A Office Space

430 North Vineyard Avenue | Ontario, CA 91764



THOMAS P. PIERIK, SIOR
(951)276-3610
tpierik@lee-associates.com
DRE #00982027

DAVID G. MUDGE, SIOR, CCIM
(951)276-3611
dmudge@lee-associates.com
DRE #01070762

LEE & ASSOCIATES
COMMERCIAL REAL ESTATE SERVICES