

± 80,527 SF For Sale or Lease

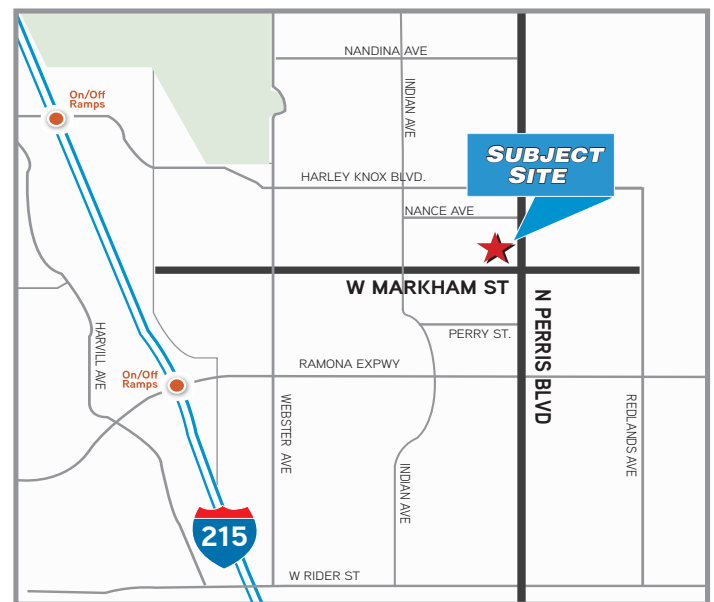


Property Features

- +/- 80,527 SF Industrial Warehouse
- 2,262 SF of 2-Story Office Area
- Divisible to +/- 51,763 SF & +/- 28,764 SF
- ESFR Ready
- 10 Dock High Doors (9' x 10')
- 2 Grade Level Door (12' x 14')
- 30' Warehouse Clearance Height
- Large Secured Truck Court
- 1200 Amps of Power
- Easy I -215 Freeway Access
- Corporate Neighbors Include:

Ross Stores, Harman Kardon, Home Depot
Lowes Home Improvement, Philips Lighting,
Walgreens, Hanesbrands, Whirlpool, Amazon,
General Mills, Fisher & Paykel, iHerb

Locator Map



IAN DEVRIES | 949.724.5509
Executive Vice President
ian.devries@colliers.com
DRE# 01019868

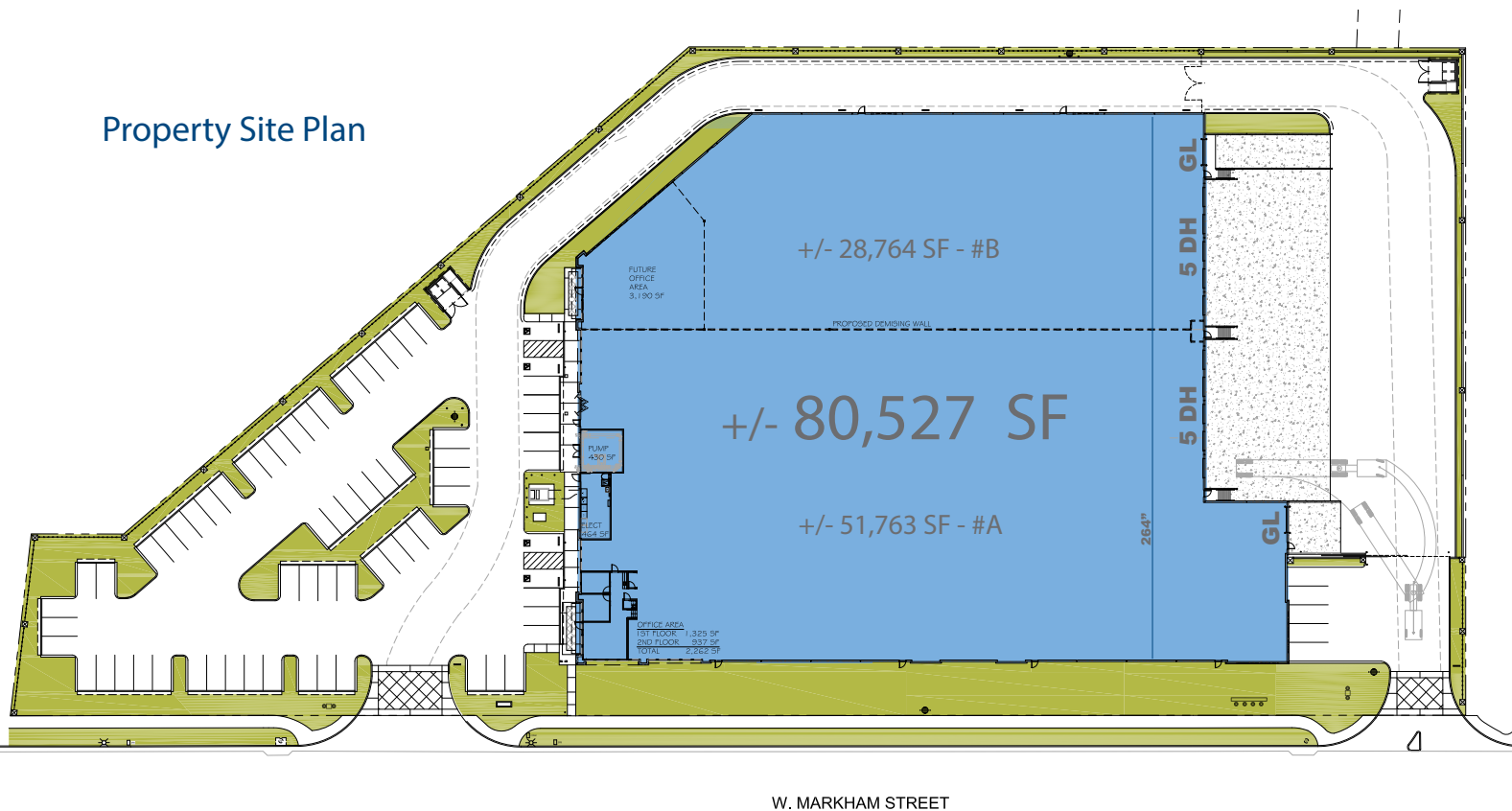
CHRIS DEVRIES | 949.724.5504
Associate Vice President
chris.devries@colliers.com
DRE# 01867314



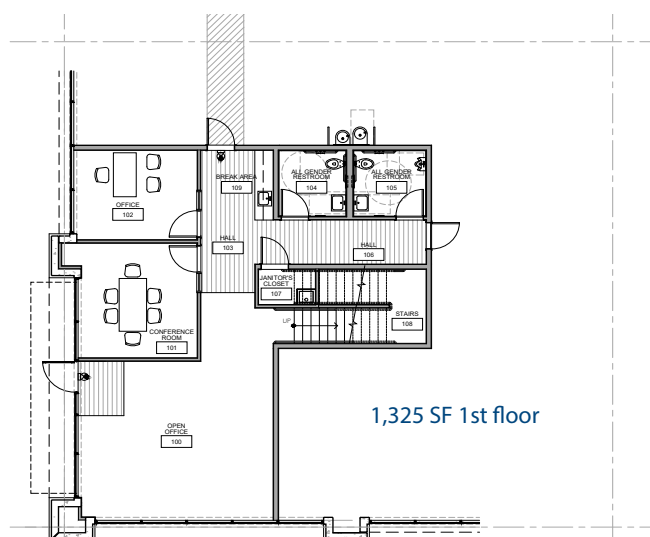
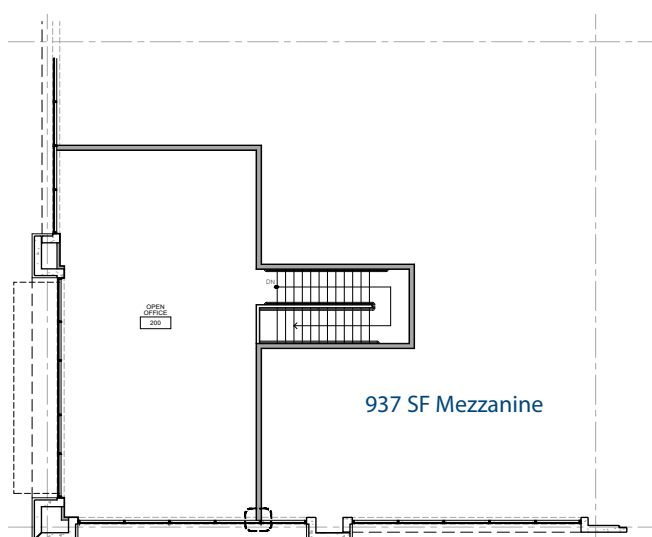
For Sale or Lease, Perris CA +/- 80,527 SF Industrial Warehouse



Property Site Plan



Existing Office Layout



IAN DEVRIES | 949.724.5509
Executive Vice President
ian.devries@colliers.com
DRE# 01019868

CHRIS DEVRIES | 949.724.5504
Associate Vice President
chris.devries@colliers.com
DRE# 01867314

DRIVING DISTANCES FROM SITE

I-215 Freeway	1.6 miles
Highway 60	6.6 miles
Ontario Int'l Airport	30.7 miles
Port of Long Beach	72.5 miles

For Sale or Lease | +/- 80,527 SF Class A Industrial Building



IAN DEVRIES | 949.724.5509
Executive Vice President
ian.devries@colliers.com
DRE# 01019868

CHRIS DEVRIES | 949.724.5504
Associate Vice President
chris.devries@colliers.com
DRE# 01867314

DIRECTIONS TO SITE

From I-215, take the Harley Knox Boulevard exit and go east. Head south on Indian Street (turn right). Go east (turn left) on Markham Street. The Property is located half a block up on your left-hand side at 212 Markham Street.