

FOR SALE

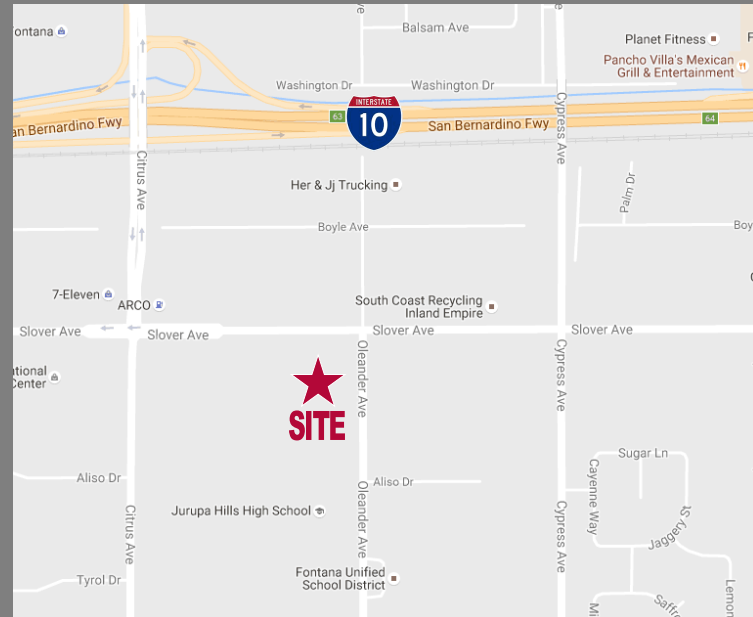
±2.4 ACRES of LAND

IMMEDIATE FREEWAY ACCESS

16297 Slover Avenue
Fontana, CA 92337



- ±2.4 Acres of Industrial Land w/1,116 SF House/Office
- Immediate I-10 Freeway Access Via The Newly Completed Citrus Ave on/off Ramp
- Improved Curb, Gutter & Sidewalk
- Separate Yard Entrance
- Zoned: M-1 (City of Fontana)
- APN: 0255-011-08



For more information, contact:

Gus Andros

P: 909.912.0003 | F: 909.912.0013
gandros@daumcommercial.com
CA License #01210292

Juan Covarrubias

P: 909.652.9055 | F: 909.652.9057
jcovarrubias@daumcre.com
CA License #01945028

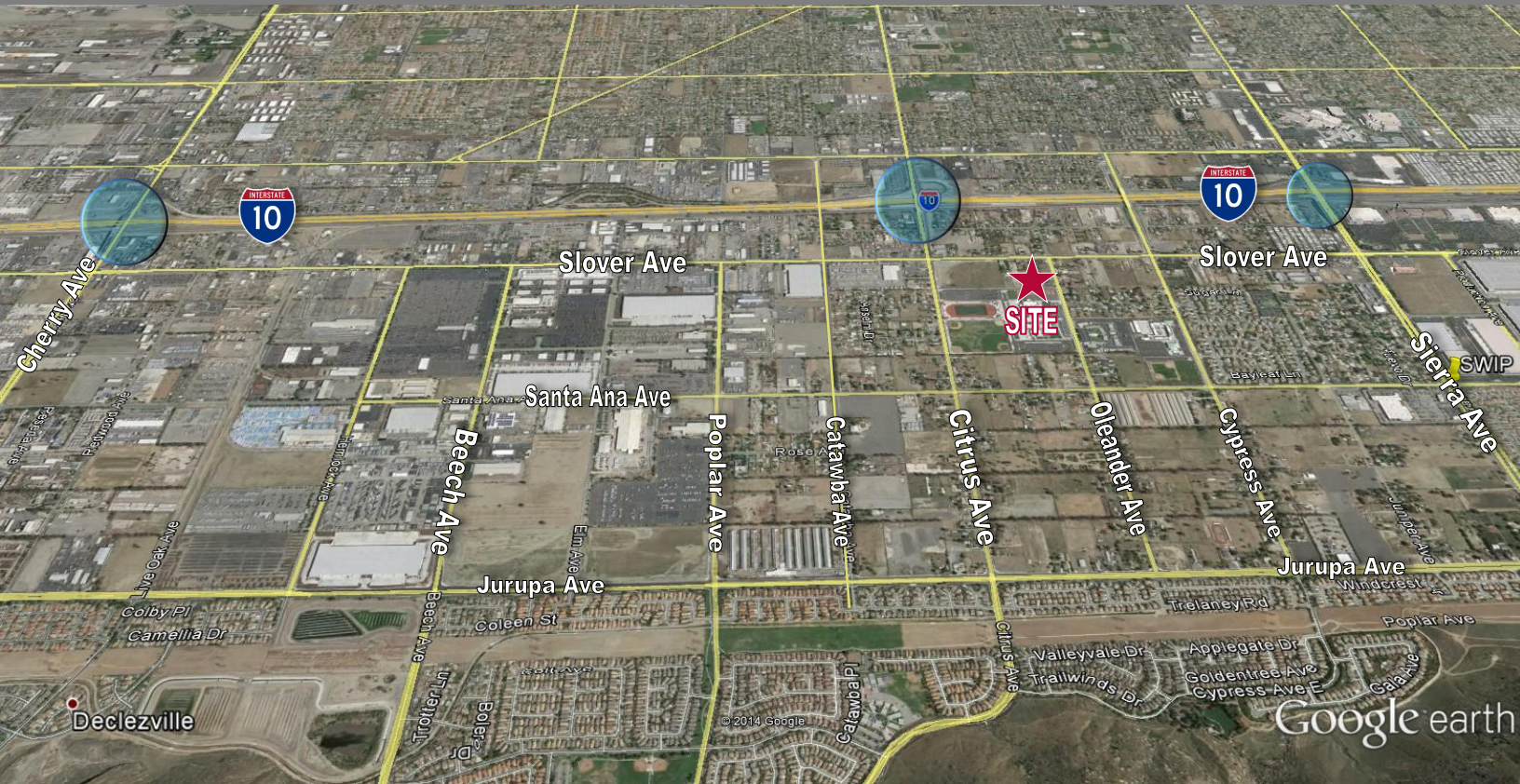
DAUM
COMMERCIAL REAL ESTATE SERVICES
ONCOR INTERNATIONAL

FOR SALE

±2.4 ACRES of LAND

IMMEDIATE FREEWAY ACCESS

16297 Slover Avenue
Fontana, CA 92337



ALLOWED USES:

- Truck Service & Repair
- Truck Sales
- Vehicle Sales
- RV Storage
- Bus Depot & Terminal
- Hotel, Offices & Other Miscellaneous Uses

* Verify Uses With City of Fontana

For more information, contact:

Gus Andros

P: 909.912.0003 | F: 909.912.0013
gandros@daumcommercial.com
CA License #01210292

Juan Covarrubias

P: 909.652.9055 | F: 909.652.9057
jcovarrubias@daumcre.com
CA License #01945028

DAUM
COMMERCIAL REAL ESTATE SERVICES
ONCOR INTERNATIONAL