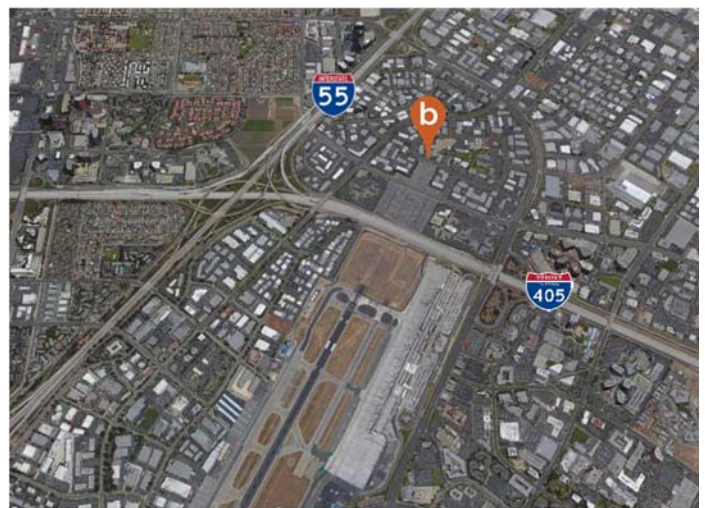


18004 Sky Park Circle Irvine



PROPERTY FEATURES

- Two suites available (\pm 2,455 and \pm 2,596 sf)
- Two-story office building
- 24 hour, card-key access & security system
- Located within the Irvine Business Complex (IBC)
- Creative office built-to-suit options
- TI packages available
- Immediate access to JWA, the 405 and 55 freeways



BroadStreet
REAL ESTATE GROUP

TROY A. WOOTON

twooton@broadstreetre.com
Broker License # 01377431
(949) 242-5210 x1001

CHAS W. LEEPER

cleeper@broadstreetre.com
Salesperson License # 01921208
(949) 242-5210 x1003

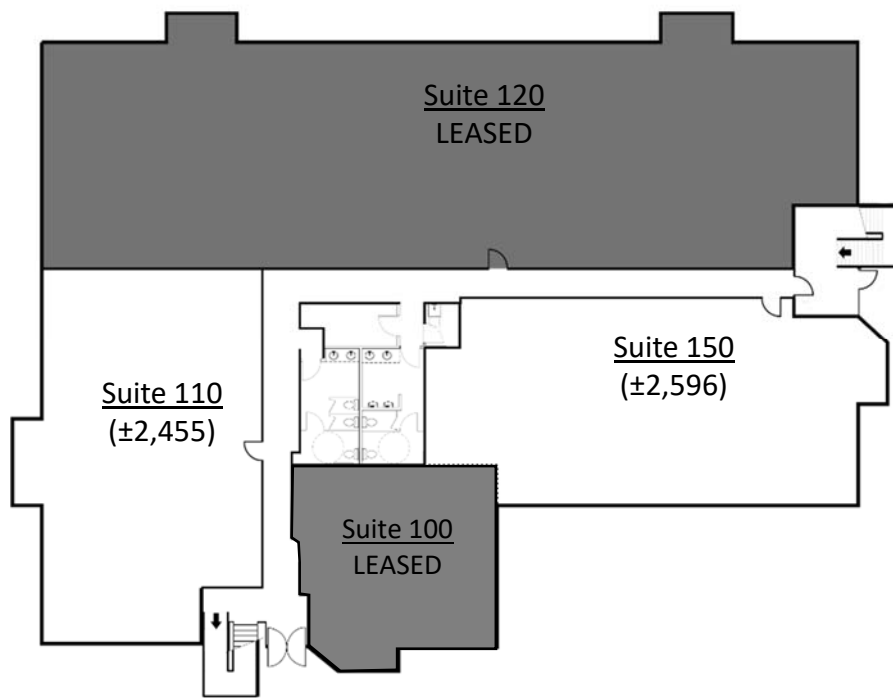
ZAC D. FIELDER

zfielder@broadstreetre.com
Salesperson License # 01989549
(949) 242-5210 x1002

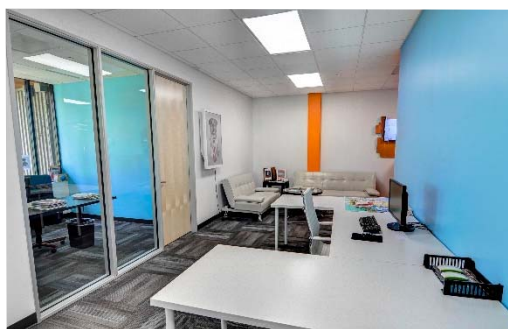
Creative / Flex Building For Lease

18004 Sky Park Circle, Irvine

AVAILABLE SUITES



FINISHED SUITES



BroadStreet
REAL ESTATE GROUP

TROY A. WOOTON
twooton@broadstreetre.com
Broker License # 01377431
(949) 242-5210 x1001

CHAS W. LEEPER
cleeper@broadstreetre.com
Salesperson License # 01921208
(949) 242-5210 x1003

ZAC D. FIELDER
zfielder@broadstreetre.com
Salesperson License # 01989549
(949) 242-5210 x1002