

Rancho Medical Plaza

28261

Marguerite Parkway

Mission Viejo

FINAL TWO REMAINING SUITES

MEDICAL & OFFICE SPACE FOR LEASE



**FOR LEASING
INFORMATION:**

MEDICAL

JOHN SCRUGGS

CA RE License #01796826
949.608.2102
jscruggs@ngkf.com

RYAN CLARK

CA RE License #01313065
949.608.2058
rclark@ngkf.com

OFFICE

DOUG MATHEWS

CA RE License #00865742
949.608.2020
dmathews@ngkf.com

**Newmark
Knight Frank**

www.ngkf.com





CLASS A MEDICAL & OFFICE BUILDING

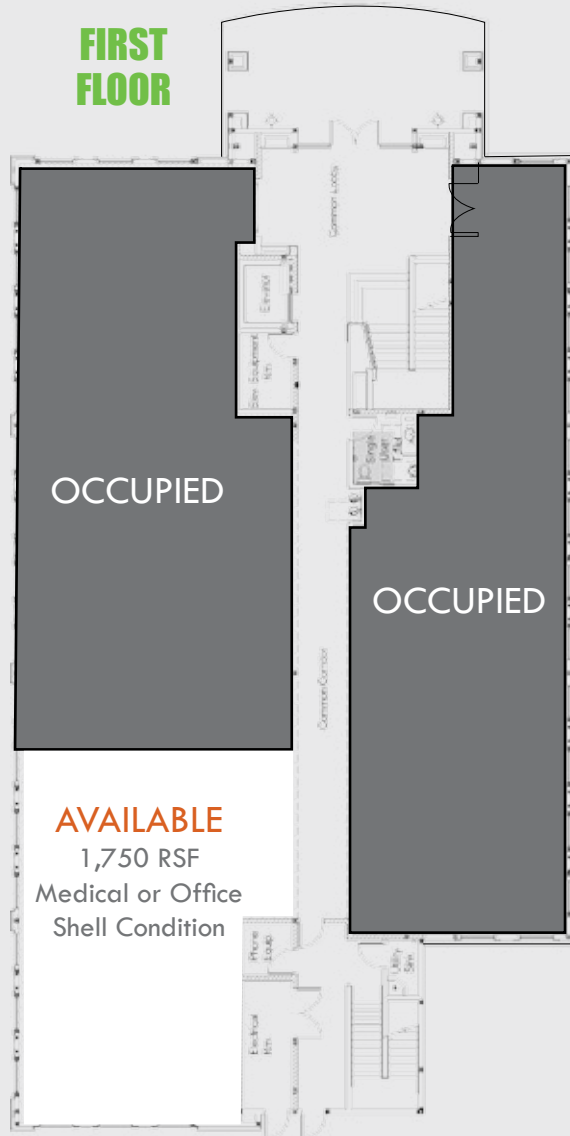
- Convenient Free Surface Parking
- Attractive Modern Architecture with High-End Finishes Throughout
- Flexible Floor Plates Divisible to Desired Square Footages
- 2nd Floor Served by ADA Gurney Size Elevator
- Tenant Improvement Packages Including Custom "Build-to-Suit" Suites Available
- Prime South Orange County Location with Immediate Access to and from the 5 Freeway
- Excellent 5 Freeway Exposure
- Less Than One Mile from the 228 Bed St. Joseph-Mission Hospital and CHOC
- Children's Regional Campus
- Immediately Adjacent to Retail and Restaurant Amenities and Walking Distance from the Shops at Mission Viejo Regional Mall and Saddleback College



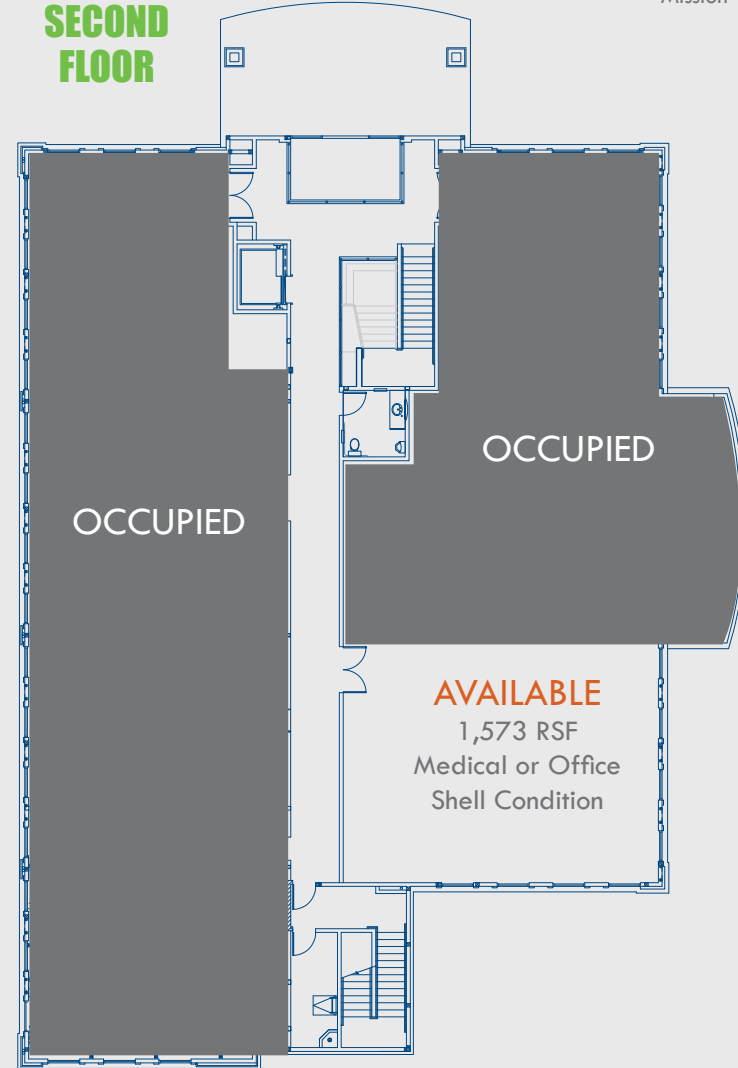
FLOOR PLANS

Rancho Medical Plaza
28261
Marguerite Parkway
Mission Viejo

FIRST FLOOR



SECOND FLOOR



Rancho Medical Plaza

28261

Marguerite Parkway

Mission Viejo



NGKF | 4675 MacArthur Court, Suite 1600, Newport Beach, CA 92660 (Corporate CA RE License #01355491)

Procuring broker shall only be entitled to a commission, calculated in accordance with the rates approved by our principal only if such procuring broker executes a brokerage agreement acceptable to us and our principal and the conditions as set forth in the brokerage agreement are fully and unconditionally satisfied. Although all information furnished regarding property for sale, rental, or financing is from sources deemed reliable, such information has not been verified and no express representation is made nor is any to be implied as to the accuracy thereof and it is submitted subject to errors, omissions, change of price, rental or other conditions, prior sale, lease or financing, or withdrawal without notice and to any special conditions imposed by our principal.

