

# MEDICAL OFFICE BUILDING

## 2001 E. 4TH STREET

Santa Ana, CA 92705

**AVAILABLE  
FOR  
LEASE**



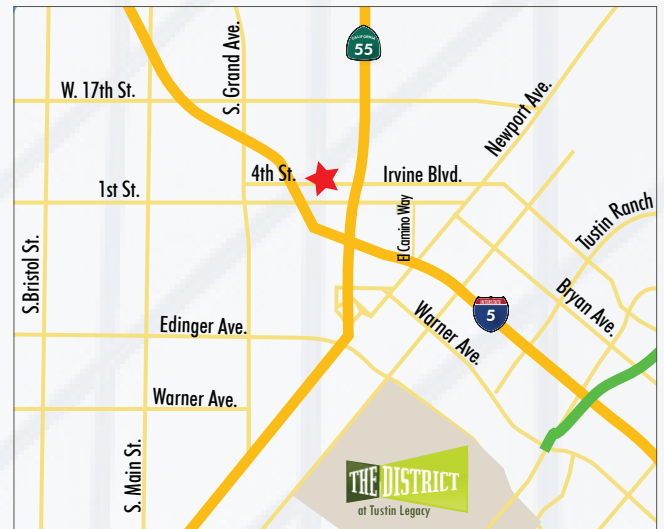
### AVAILABILITY

Suite	Type	Size	Lease Rate
114	Medical/Office	1,327 SF	\$1.95 FSG
208	Medical /Office	1,443 SF	\$1.95 FSG
210	Medical/Office	525 SF	\$1.95 FSG
220	Medical/Office	1,052 SF	\$1.95 FSG

208 & 220 can be combined

### PROJECT HIGHLIGHTS

- Corner unit property with E. 4th Street visibility
- Short distance to St. Joseph Medical Facility and Orange County Medical Center
- 2-story medical and office building
- Located near residential and commercial area
- Turn key improvements and available for long term lease deals
- On-site property management team
- Elevator served
- Excellent access to the 405, 5 and 55 Freeways



## CONTACT



**Mia Pham**  
Senior Vice President  
CalBRE 01875144  
949.790.3129  
mpham@leevine.com



**Eric Darnell**  
Senior Vice President  
CalBRE 01888743  
949.790.3157  
edarnell@leevine.com

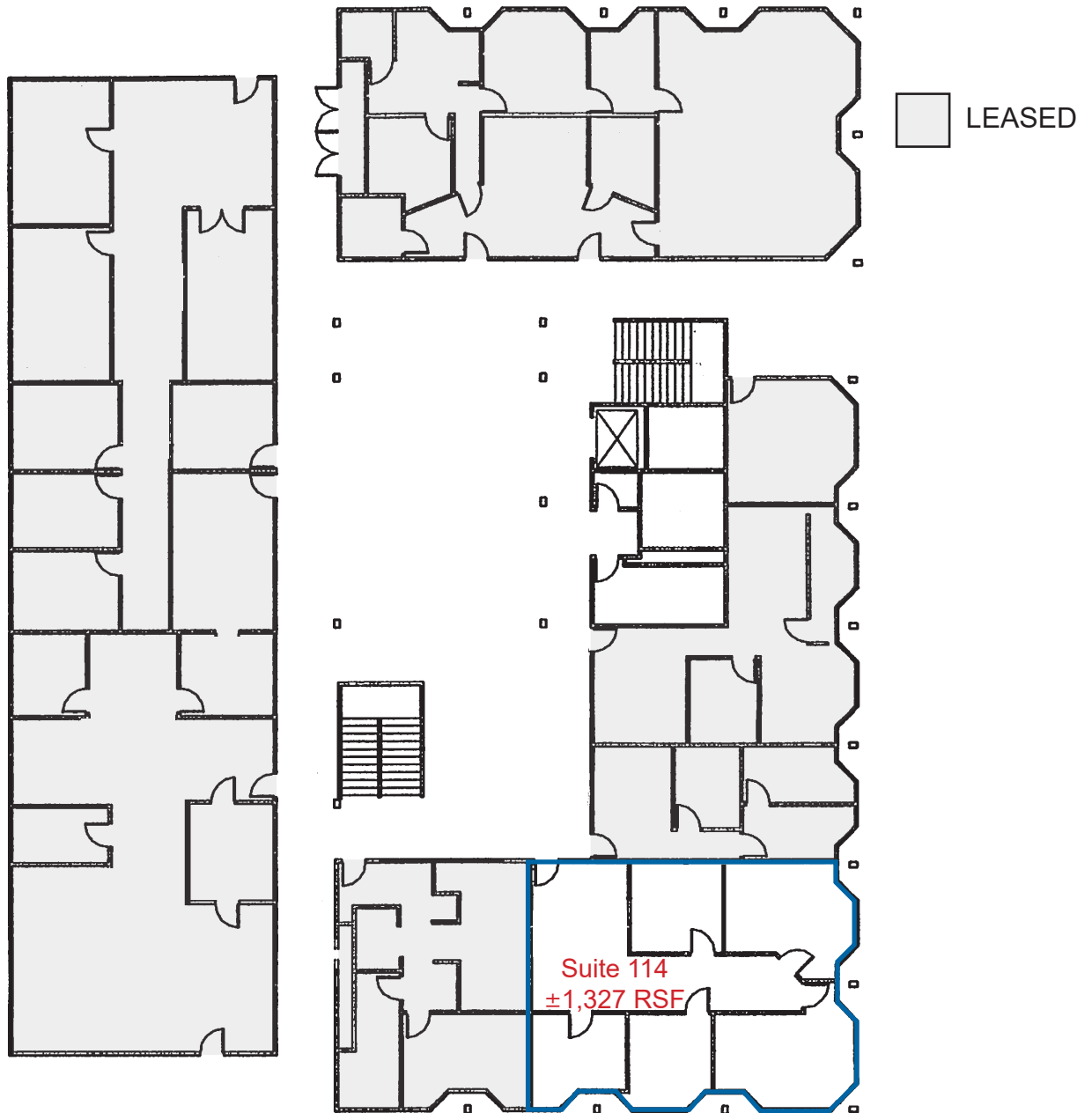


COMMERCIAL REAL ESTATE SERVICES  
No warranty or representation is made to the accuracy of the foregoing information. Terms of sale or lease and availability are subject to change or withdrawal without notice.

# 2001 E. 4TH STREET

Santa Ana, CA 92705

## Floor Plan - First Floor



## CONTACT



**Mia Pham**  
Senior Vice President  
CalBRE 01875144  
949.790.3129  
mpham@leeirvine.com



**Eric Darnell**  
Senior Vice President  
CalBRE 01888743  
949.790.3157  
edarnell@leeirvine.com

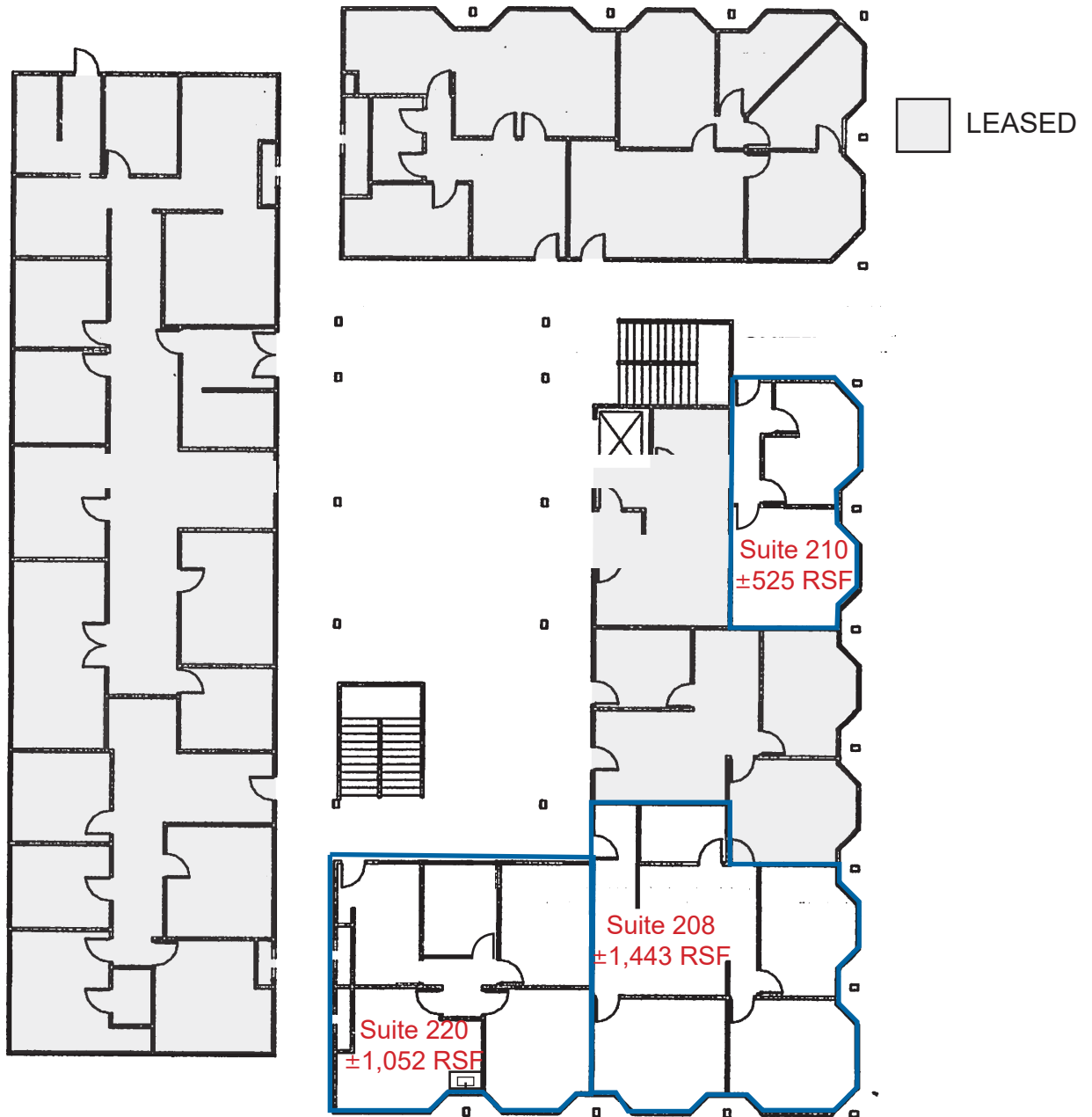


COMMERCIAL REAL ESTATE SERVICES  
No warranty or representation is made to the accuracy of the foregoing information. Terms of sale or lease and availability are subject to change or withdrawal without notice.

# 2001 E. 4TH STREET

Santa Ana, CA 92705

## Floor Plan - Second Floor



## CONTACT



**Mia Pham**  
Senior Vice President  
CalBRE 01875144  
949.790.3129  
mpham@leeirvine.com



**Eric Darnell**  
Senior Vice President  
CalBRE 01888743  
949.790.3157  
edarnell@leeirvine.com



COMMERCIAL REAL ESTATE SERVICES  
No warranty or representation is made to the accuracy of the foregoing information. Terms of sale or lease and availability are subject to change or withdrawal without notice.

# 2001 E. 4TH STREET

Santa Ana, CA 92705

## Photographs



## CONTACT



**Mia Pham**  
Senior Vice President  
CalBRE 01875144  
949.790.3129  
mpham@leeirvine.com



**Eric Darnell**  
Senior Vice President  
CalBRE 01888743  
949.790.3157  
edarnell@leeirvine.com



COMMERCIAL REAL ESTATE SERVICES  
No warranty or representation is made to the accuracy of the foregoing information. Terms of sale or lease and availability are subject to change or withdrawal without notice.