

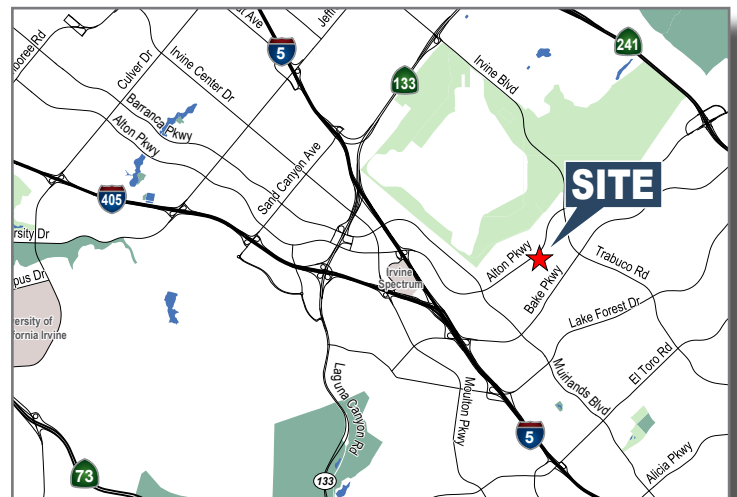
Alton Business Park - 1,873 SF

6 Morgan, Suite 122, Irvine Spectrum, CA



Features:

- **1,667 SF of Office Consisting of:**
3 Private Offices, Open Area, Small Warehouse,
1 Restroom
- **High-Image, Multi-Tenant Business Park**
- **Prominent Exterior Signage**
- **Flexible Design for Expansion-Oriented Tenants**
- **Parking Ratio: 3.8:1,000**
- **1 Ground Level Loading Door**
- **Fully Sprinklered**
- **Immediate Occupancy**
- **Net Charges Currently Estimated @ \$0.28/SF**



SAM OLMSTEAD

Vice President
Lic. #01186543
949.263.5337
solvstead@voitco.com

Voit

REAL ESTATE SERVICES

www.VoitCo.com

2020 Main Street, Suite 100, Irvine, CA 92614 • 949.851.5100 • 949.261.9092 Fax

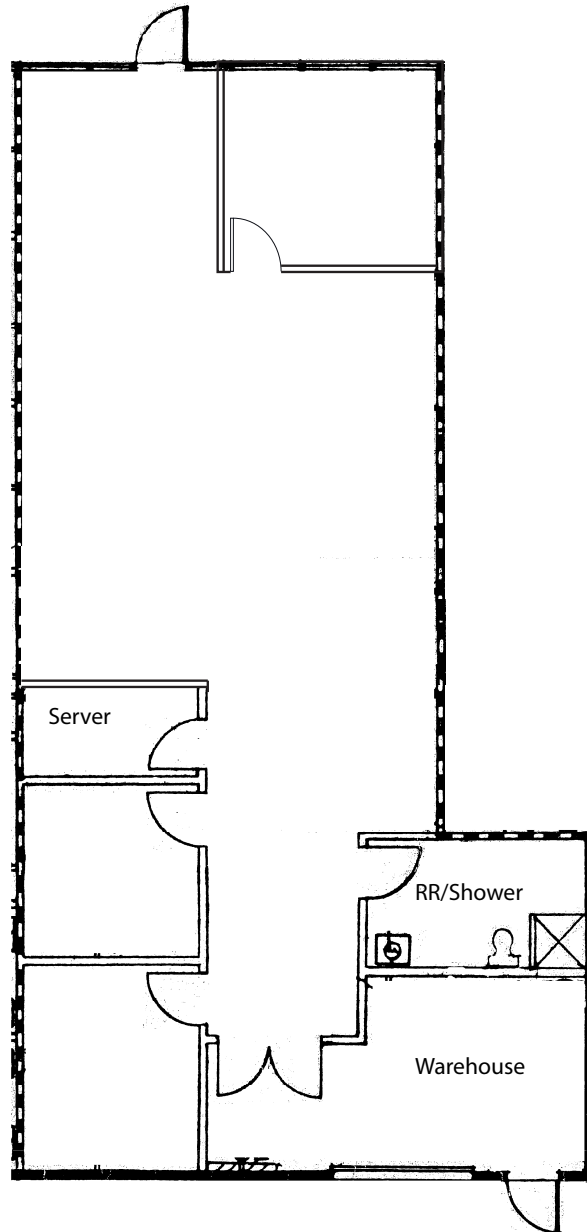
Licensed as a Real Estate Salesperson by the DRE. The information contained herein has been obtained from sources we deem reliable. While we have no reason to doubt its accuracy, we do not guarantee it. ©2019 Voit Real Estate Services, Inc. All Rights Reserved. License #01991785.

Alton Business Park - 1,873 SF

6 Morgan, Suite 122, Irvine Spectrum, CA

6 Morgan, Suite 122

1,873 Square Feet



3 Private Offices, Server Room, Open Area,
Small Warehouse, 1 Restroom with Shower

SAM OLMSTEAD

Vice President

Lic. #01186543

949.263.5337

solmstead@voitco.com

Voit

REAL ESTATE SERVICES

www.VoitCo.com

2020 Main Street, Suite 100, Irvine, CA 92614 • 949.851.5100 • 949.261.9092 Fax

Licensed as a Real Estate Salesperson by the DRE. The information contained herein has been obtained from sources we deem reliable.

While we have no reason to doubt its accuracy, we do not guarantee it. ©2019 Voit Real Estate Services, Inc. All Rights Reserved. License #01991785.