

AVAILABILITY



REAL ESTATE SERVICES

Hoover Business Park

7643-7725 Garden Grove Blvd. & 12600-12714 Hoover Street
Garden Grove, CA 92841

WAREHOUSE UNITS

Address	Total Size ¹	Office Size ¹	Asking Rate PSF	Monthly Rate	Comments
12714 Hoover Street	3,600	±720	\$1.35 Mod. Gross	\$4,860.00	Large reception/open office area, 2 private offices, 2 restrooms and warehouse with ground level loading door.

OFFICE UNITS

Address	Total Size ¹	Office Size ¹	Asking Rate PSF	Monthly Rate	Comments
---------	-------------------------	--------------------------	--------------------	--------------	----------

No Availability

RETAIL UNITS

Address	Total Size ¹	Office Size ¹	Asking Rate PSF	Monthly Rate	Comments
---------	-------------------------	--------------------------	--------------------	--------------	----------

No Availability

[Property Touring Guidelines](#) >

¹Approximate total and office square footage

Hayden Socci, CCIM

Senior Vice President

714.935.2379

hsocci@voitco.com

Lic #01705038



2400 E. Katella Avenue, Suite 750, Anaheim, CA 92806 • 714.978.7880 • 714.276.0664 Fax • Lic #01991785 | www.voitco.com

The information contained herein has been obtained from sources we deem reliable. While we have no reason to doubt its accuracy, we do not guarantee it.
©2021 Voit Real Estate Services, Inc. All Rights Reserved. Real People. Real Solutions.® is a registered trademark of Voit Real Estate Services.

Real People. Real Solutions.®

Hoover Business Park

7643-7725 Garden Grove Boulevard &
12600-12714 Hoover Street, Garden Grove, CA 92841

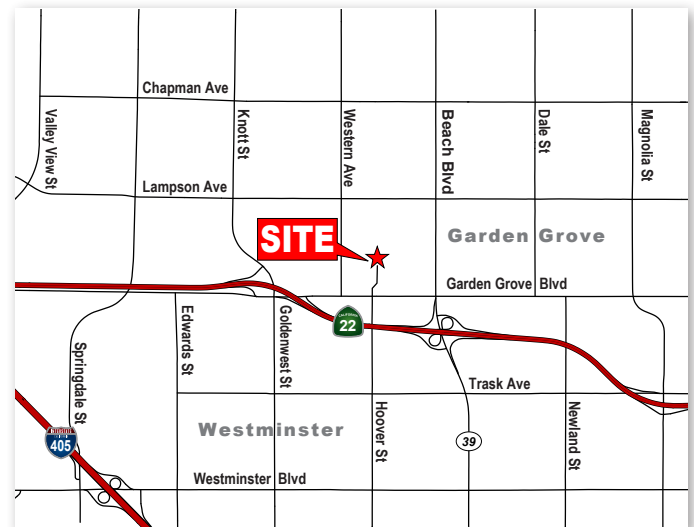
Voit

REAL ESTATE SERVICES



PROPERTY HIGHLIGHTS

- Units Range From 500 To 8,275 SF
- Twelve (12) Multi-Tenant Industrial/Office/Retail Buildings Totaling 189,526 SF
- High Image Business Park
- Over Standard Parking: 3.7:1 Parking Ratio
- Major Garden Grove Boulevard Frontage
- Ground Level Loading
- Excellent Freeway Access
- Close Proximity To The Garden Grove (22), San Diego (405) & Long Beach (605) Freeways



For More Information, Please Contact:

Hayden Socci, CCIM

Senior Vice President

Lic #01705038

714.935.2379

hsocci@voitco.com

2400 E. Katella Ave., Ste. 750, Anaheim, CA 92806 • 714.978.7880 • 714.276.0664 Fax • Lic #01991785 | www.voitco.com

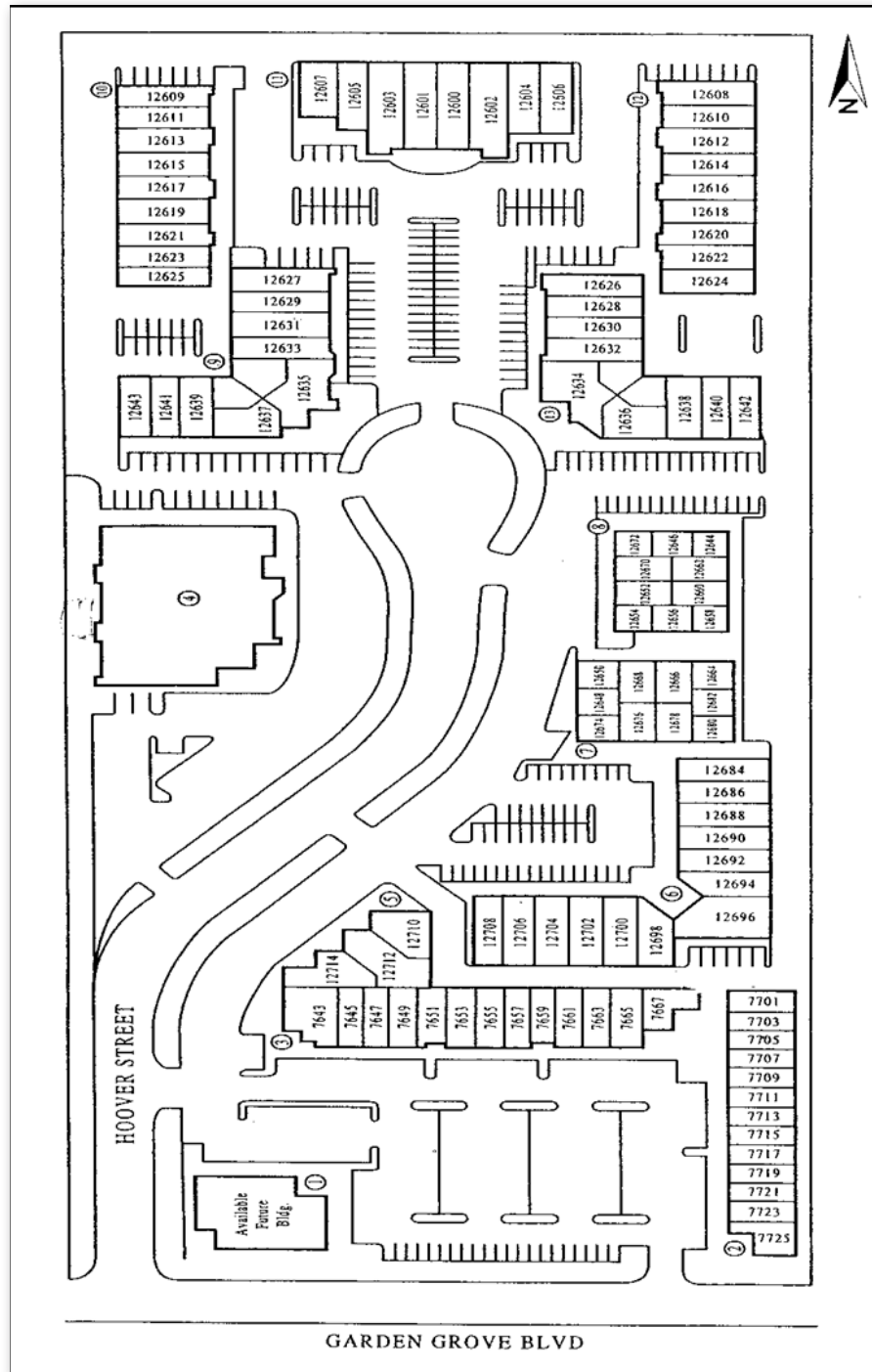


Hoover Business Park

7643-7725 Garden Grove Boulevard &
12600-12714 Hoover Street, Garden Grove, CA 92841

Voit

REAL ESTATE SERVICES



For More Information, Please Contact:

Hayden Socci, CCIM

Senior Vice President

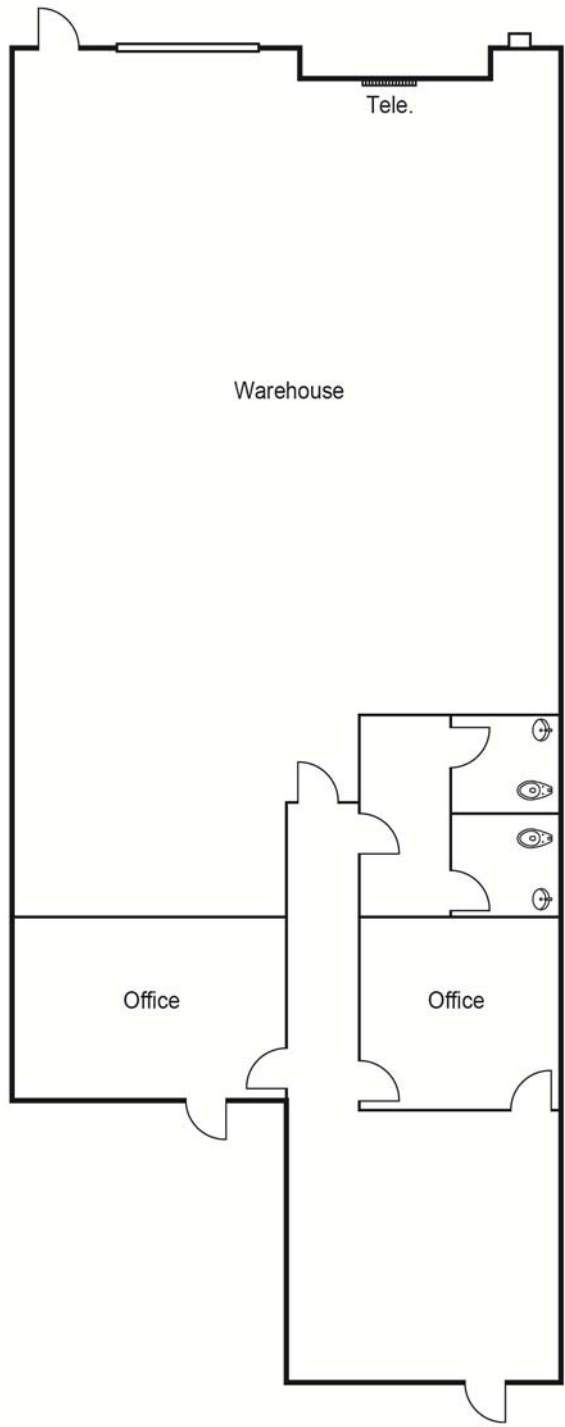
Lic #01705038

714.935.2379

hsocci@voitco.com

2400 E. Katella Ave., Ste. 750, Anaheim, CA 92806 • 714.978.7880 • 714.276.0664 Fax • Lic #01991785 | www.voitco.com





Hoover Business Park
12714 Hoover Street
3,600 Square Feet