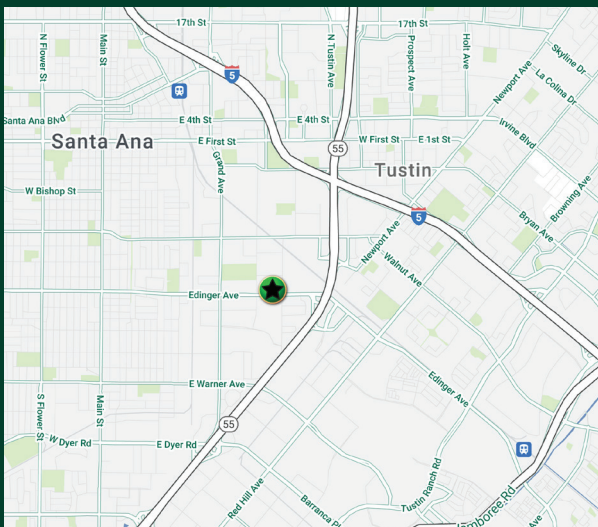


Edinger Plaza

1801 E. Edinger Avenue, Santa Ana, CA 92705

Transforming workplaces
to empower organizations
to create impact and inspire
fulfillment



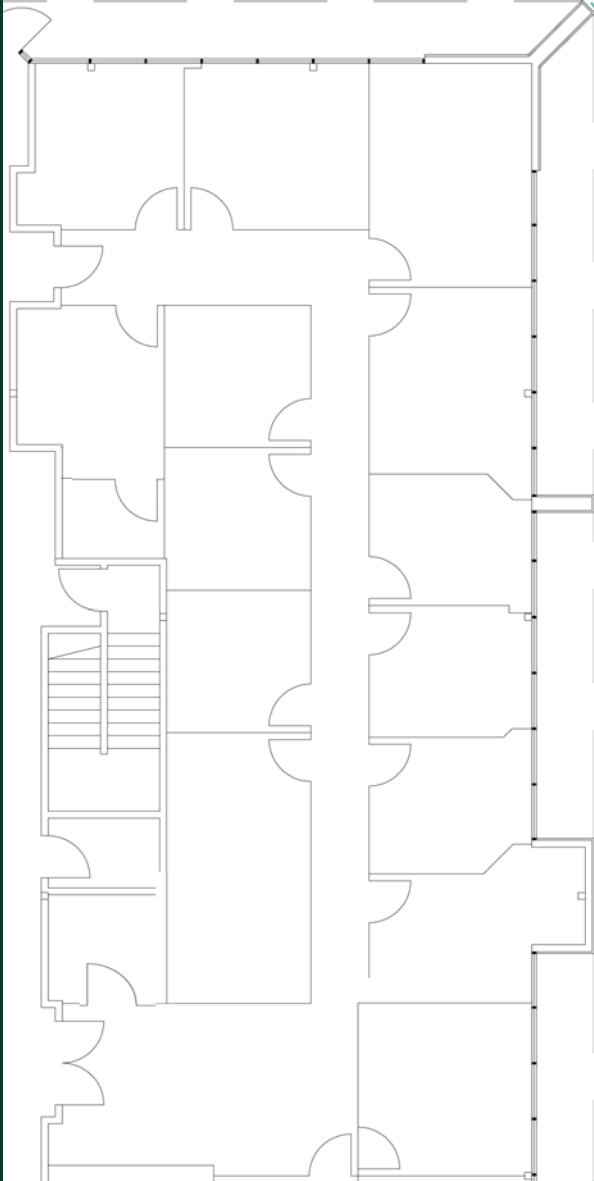
Building Features

- 52,997 SF Free Standing Office Building
- Plentiful Surface Free Parking
- Well-Maintained: Owner Occupies 44% of Building
- On-Site Security
- Beautiful Common Area Courtyard
- Access to 1,700 SF Training Room
- Abundant Retail Amenities Nearby
- Excellent Access to the Costa Mesa (55), Santa Ana (5), San Diego (405) Freeways

Edinger Plaza

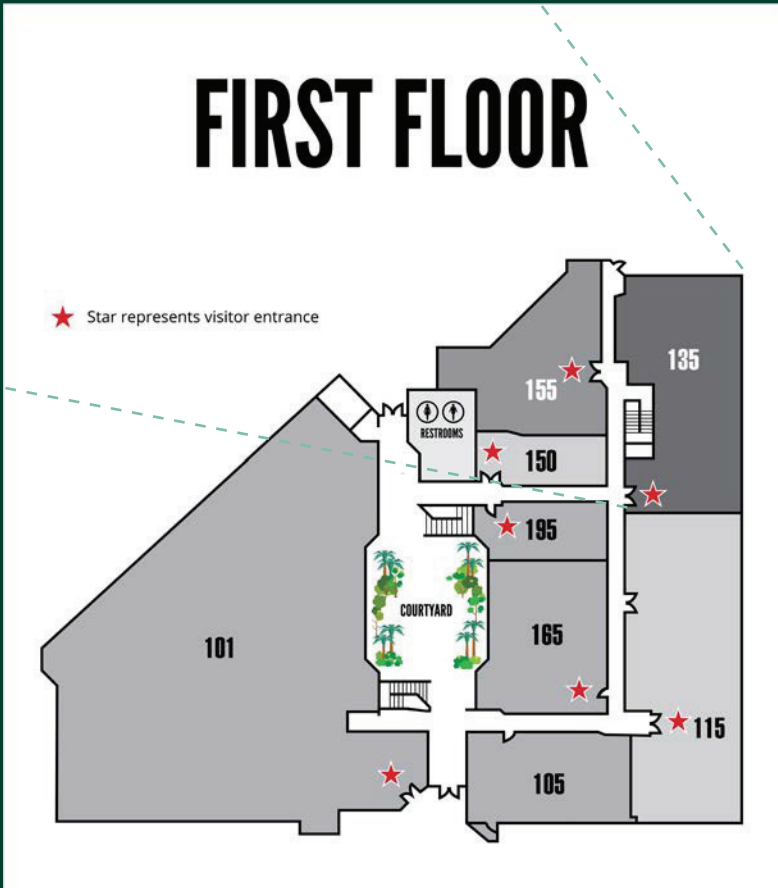
1801 E. Edinger Avenue, Suite 135 | Santa Ana, California 92705

For Lease



Suite 135 - +2,959 SF

Suite includes 10 offices, conference room, kitchen, and double door entry with reception area. Move-in ready.



Edinger Plaza

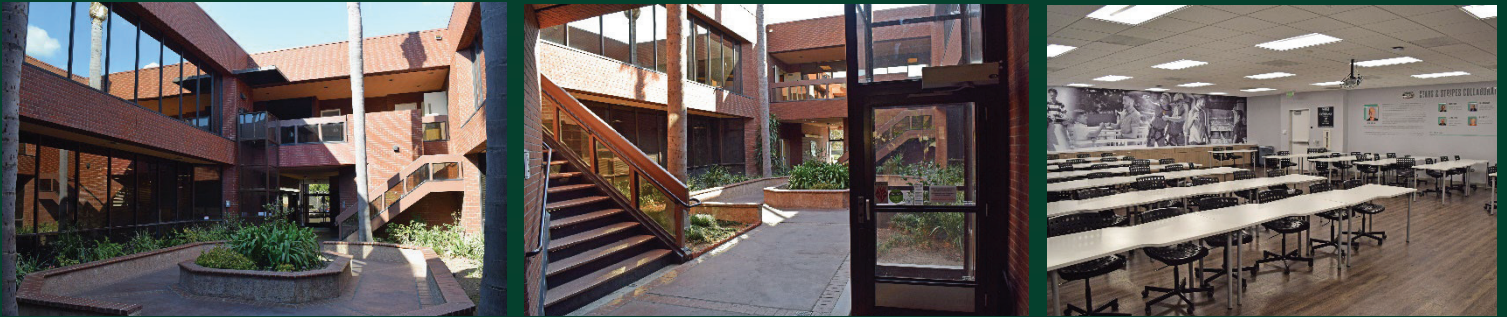
1801 E. Edinger Avenue, Suite 135 | Santa Ana, California 92705

For Lease



1801 E. EDINGER AVE.
Santa Ana, California

Great Common Amenities:



Contact Us

Taylor Friend
+1 949 809 4065
taylor.friend@cbre.com
Lic. 01885394

Ross Bourne
+1 949 725 8537
ross.bourne@cbre.com
Lic. 01436669

Home to Wonderful Tenants



© 2025 CBRE, Inc. CBRE, Inc. All rights reserved. This information has been obtained from sources believed reliable but has not been verified for accuracy or completeness. CBRE, Inc. makes no guarantee, representation or warranty and accepts no responsibility or liability as to the accuracy, completeness, or reliability of the information contained herein. You should conduct a careful, independent investigation of the property and verify all information. Any reliance on this information is solely at your own risk. CBRE and the CBRE logo are service marks of CBRE, Inc. All other marks displayed on this document are the property of their respective owners, and the use of such marks does not imply any affiliation with or endorsement of CBRE. Photos herein are the property of their respective owners. Use of these images without the express written consent of the owner is prohibited.