





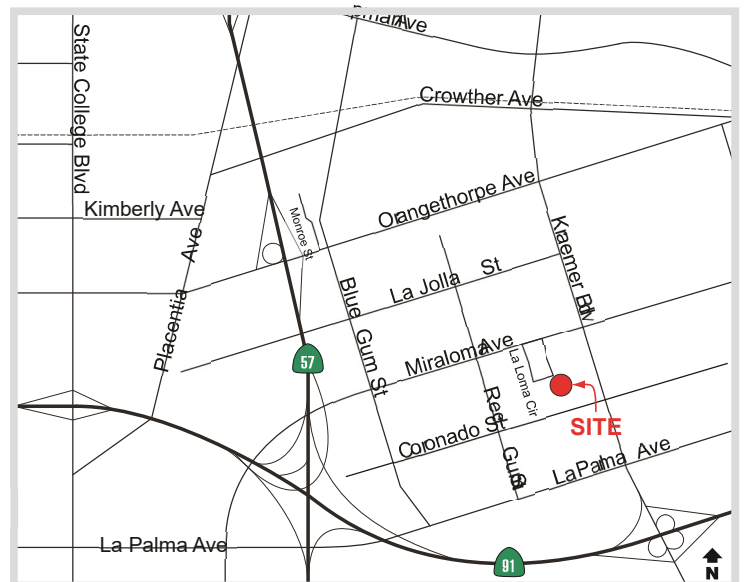
1258 LA LOMA CIRCLE
ANAHEIM, CA

For Lease
±1,584 SF



Building Features

- Business Park Environment
- ± 400 Square Feet of Office Space
- Excellent Location in East Anaheim
- 100 Amps Power
- 14' Warehouse Clearance
- 1 Ground Level Loading Door
- Fully Fire Sprinklered
- Low City of Anaheim Utility Costs
- Located within the Anaheim Canyon Business Corridor
- Excellent Access to Riverside , Orange , 57 , & Costa Mesa  Freeways



REED RUTTER

MICHAEL ZEHNER

Voit
REAL ESTATE SERVICES

ZEHNER HILL
INDUSTRIAL GROUP

Senior Vice President

714.935.2328 mczehner@voitco.com
Lic#01917963

Senior Associate

949.933.5744
rrutter@voitco.com
Lic#02153762

2020 Main Street, Suite 100, Irvine CA 92614 • 949.851.5100 • 949.261.9092 Fax

MICHAEL ZEHNER

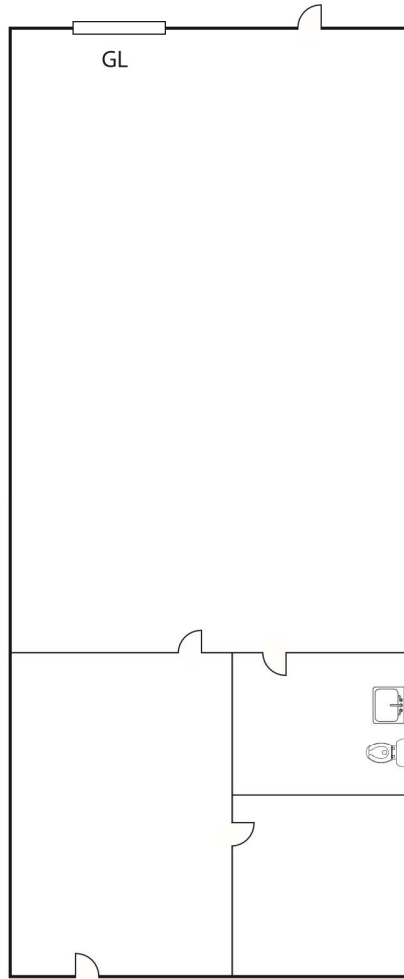
Senior Vice President
714.935.2328

REED RUTTER

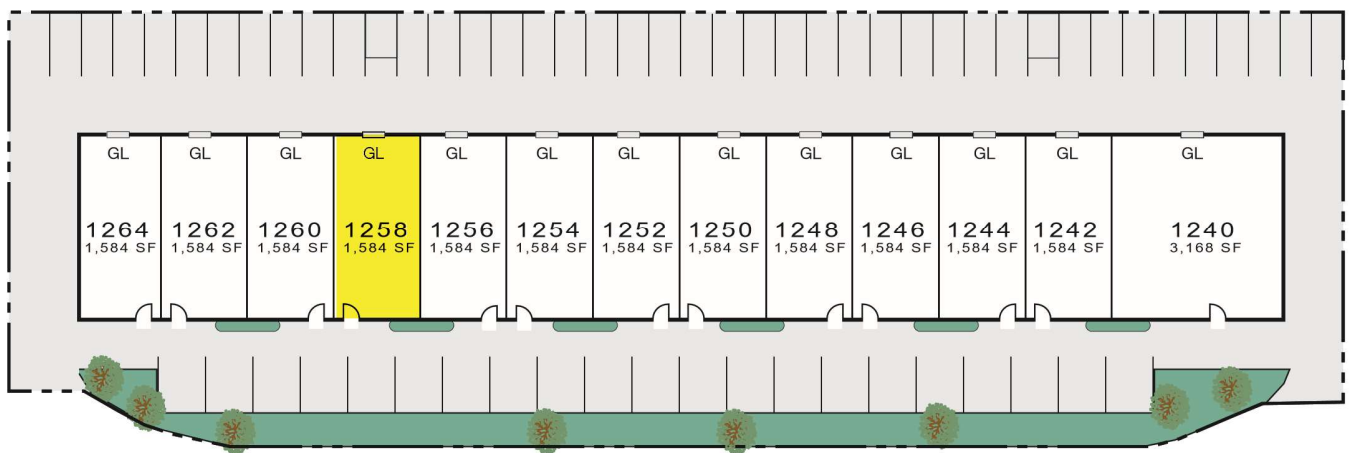
Senior Associate
949.933.5744

1258 LA LOMA CIRCLE ANAHEIM, CA

For Lease
±1,584 SF



*Floor Plan Not to Scale



LA LOMA CIRCLE

mczehner@voitco.com
Lic#01917963

rrutter@voitco.com
Lic#02153762

Licensed as Real Estate Salespersons by the CA Dept. of Real Estate. The information contained herein has been obtained from sources we deem reliable. While we have no reason to doubt its accuracy, we do not guarantee it. ©2026 Voit Real Estate Services, Inc. All Rights Reserved. License #01991785.

Voit
REAL ESTATE SERVICES

ZEHNER HILL
INDUSTRIAL GROUP