

FOR SUBLEASE
±3,228 SF AVAILABLE

2131 S. GROVE AVENUE
Ontario, CA 91761



PROPERTY HIGHLIGHTS

- ±3,228 SF Available
- Sublease Term Through October 31, 2027
- Two (2) Ground Level Doors
- Open Bullpen Area & Two Private Offices
- 16' Clear Height
- 1 Restroom
- Close Proximity to the CA-60, CA-83, and I-10 Freeways

LOCATION MAP



RYAN EARNHART
D (909) 373-2724
rearnhart@lee-assoc.com
DRE #01426559

BRIAN PHARRIS
D (909) 373-2927
bpharris@lee-assoc.com
DRE #01329363

NICK ZOLFERINO
D (909) 373-2703
nzolferino@lee-assoc.com
DRE #02207120

LEE & ASSOCIATES - ONTARIO
3535 Inland Empire Boulevard
Ontario, CA 91764
(909) 989-7771
Corporate ID: 00976995

LEE & ASSOCIATES
COMMERCIAL REAL ESTATE SERVICES

FOR SUBLEASE
±3,228 SF AVAILABLE

2131 S. GROVE AVENUE
Ontario, CA 91761



RYAN EARNHART
D (909) 373-2724
rearnhart@lee-assoc.com
DRE #01426559

BRIAN PHARRIS
D (909) 373-2927
bpharris@lee-assoc.com
DRE #01329363

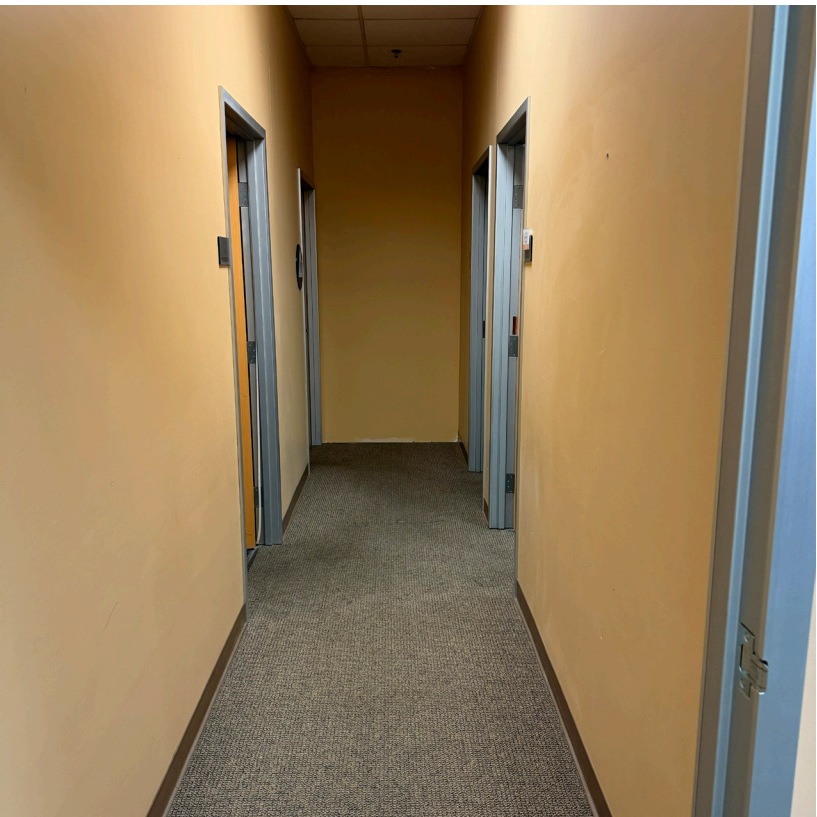
NICK ZOLFERINO
D (909) 373-2703
nzolferino@lee-assoc.com
DRE #02207120

LEE & ASSOCIATES - ONTARIO
3535 Inland Empire Boulevard
Ontario, CA 91764
(909) 989-7771
Corporate ID: 00976995

 **LEE & ASSOCIATES**
COMMERCIAL REAL ESTATE SERVICES

FOR SUBLEASE
±3,228 SF AVAILABLE

2131 S. GROVE AVENUE
Ontario, CA 91761



RYAN EARNHART
D (909) 373-2724
rearnhart@lee-assoc.com
DRE #01426559

BRIAN PHARRIS
D (909) 373-2927
bpharris@lee-assoc.com
DRE #01329363

NICK ZOLFERINO
D (909) 373-2703
nzolferino@lee-assoc.com
DRE #02207120

LEE & ASSOCIATES - ONTARIO
3535 Inland Empire Boulevard
Ontario, CA 91764
(909) 989-7771
Corporate ID: 00976995

 **LEE & ASSOCIATES**
COMMERCIAL REAL ESTATE SERVICES

lee-associates.com

All information furnished regarding property for sale, rental or financing is from sources deemed reliable, but no warranty or representation is made to the accuracy thereof and same is submitted to errors, omissions, change of price, rental or other conditions prior to sale, lease or financing or withdrawal without notice. No liability of any kind is to be imposed on the broker herein.