

INDUSTRIAL FOR LEASE | 2,200 SF

2822 METROPOLITAN PLACE POMONA, CA 91767

COMPETITIVE GROSS LEASE RATE | NO CAMS



PROPERTY HIGHLIGHTS

- Approximately 2,200 SF Unit Zoned Industrial
- 400 SF Office Area, Reception, Private Office
- One Ground Level Door (1) 12'x 12'
- 100 amps 120/240 volt (3P)
- 16' Minimum Clearance



MATTHEW ROSSMAN
DIRECTOR OF MARKETING
714.783.2107
matt@bryanindprop.com
CA DRE #01794680

BRYAN INDUSTRIAL PROPERTIES
146 E. ORANGETHORPE AVENUE
ANAHEIM, CA 92801
BRYANINDPROP.COM
CA DRE #00002442



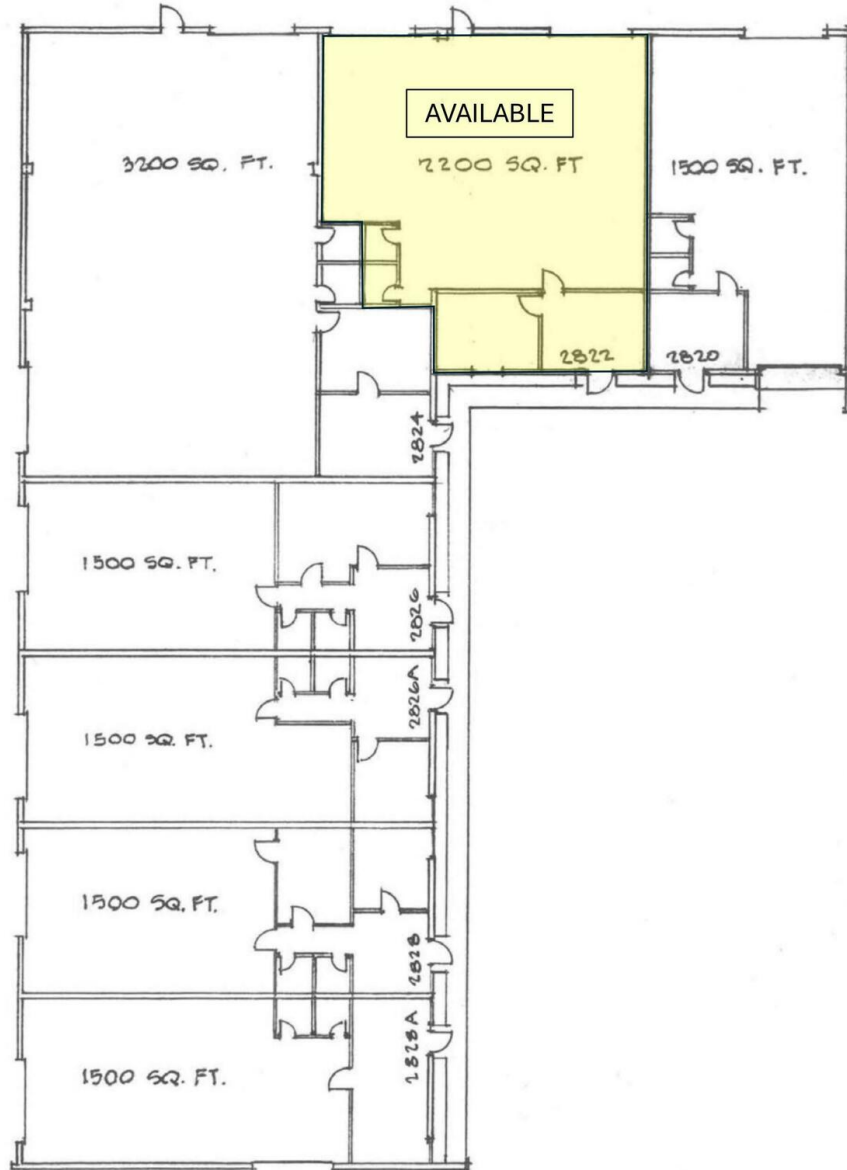
The information contained herein has been obtained from sources we deem reliable. However, no warranties or representations, expressed or implied, are made as to the accuracy of any information contained herein, and the information is subject to errors and omissions. This information is also subject to price, rental or other conditions, withdrawal without notice, and to any special listing conditions by our principals.

INDUSTRIAL FOR LEASE | 2,200 SF

2822 METROPOLITAN PLACE POMONA, CA 91767

FLOOR PLANS

2822 Metropolitan Place, Pomona
2,200 Square Feet



[For reference purposes only... not to scale...]

MATTHEW ROSSMAN
DIRECTOR OF MARKETING
714.783.2107
matt@bryanindprop.com
CA DRE #01794680

BRYAN INDUSTRIAL PROPERTIES
146 E. ORANGETHORPE AVENUE
ANAHEIM, CA 92801
BRYANINDPROP.COM
CA DRE #00002442

