

# INDUSTRIAL FOR LEASE | 1,500 SF

2820 METROPOLITAN PLACE POMONA, CA 91767

COMPETITIVE GROSS LEASE RATE | NO CAMS



## PROPERTY HIGHLIGHTS

- Approximately 1,500 SF Unit Zoned Industrial
- 400 SF Office Area, Reception, Private Office
- One Ground Level Door (1) 12'x 12'
- 100 amps 120/240 volt (3P)
- 16' Minimum Clearance



**MATTHEW ROSSMAN**  
DIRECTOR OF MARKETING  
714.783.2107  
matt@bryanindprop.com  
CA DRE #01794680

**BRYAN INDUSTRIAL PROPERTIES**  
146 E. ORANGETHORPE AVENUE  
ANAHEIM, CA 92801  
BRYANINDPROP.COM  
CA DRE #00002442



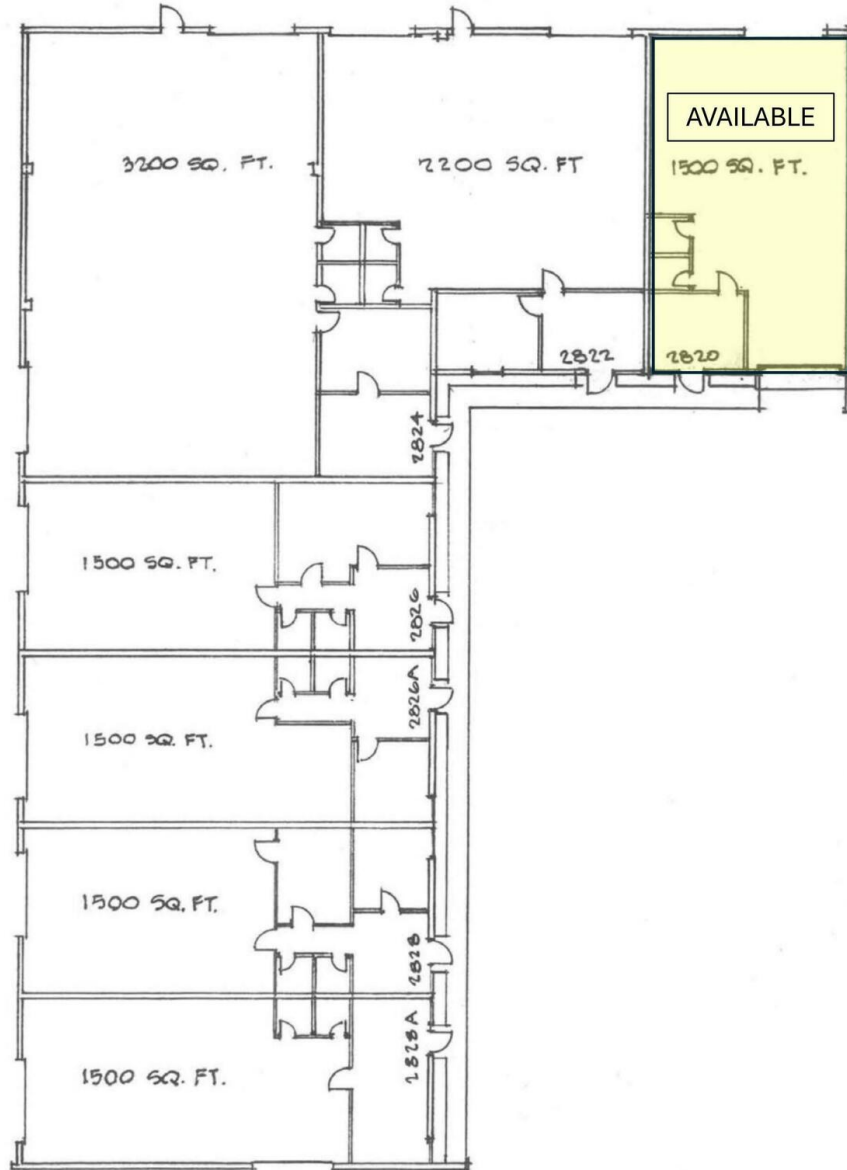
The information contained herein has been obtained from sources we deem reliable. However, no warranties or representations, expressed or implied, are made as to the accuracy of any information contained herein, and the information is subject to errors and omissions. This information is also subject to price, rental or other conditions, withdrawal without notice, and to any special listing conditions by our principals.

# INDUSTRIAL FOR LEASE | 1,500 SF

2820 METROPOLITAN PLACE POMONA, CA 91767

## FLOOR PLANS

2820 Metropolitan Place, Pomona  
1,500 Square Feet



[For reference purposes only... not to scale...]

**MATTHEW ROSSMAN**  
DIRECTOR OF MARKETING  
714.783.2107  
matt@bryanindprop.com  
CA DRE #01794680

**BRYAN INDUSTRIAL PROPERTIES**  
146 E. ORANGETHORPE AVENUE  
ANAHEIM, CA 92801  
BRYANINDPROP.COM  
CA DRE #00002442

