

INDUSTRIAL FOR LEASE | 4,680 SF

2818 "C" METROPOLITAN PLACE POMONA, CA 91767

COMPETITIVE GROSS LEASE RATE | NO CAMS



PROPERTY HIGHLIGHTS

- Approximately 2,340 SF Unit Zoned Industrial
- 400 SF Office Area, Private Office
- One Ground Level Doors (1) 12'x 12'
- 100 amps 120/240 volt & 400 amps 240 volt (3P)
- 16' Minimum Clearance



MATTHEW ROSSMAN
DIRECTOR OF MARKETING
714.783.2107
matt@bryanindprop.com
CA DRE #01794680

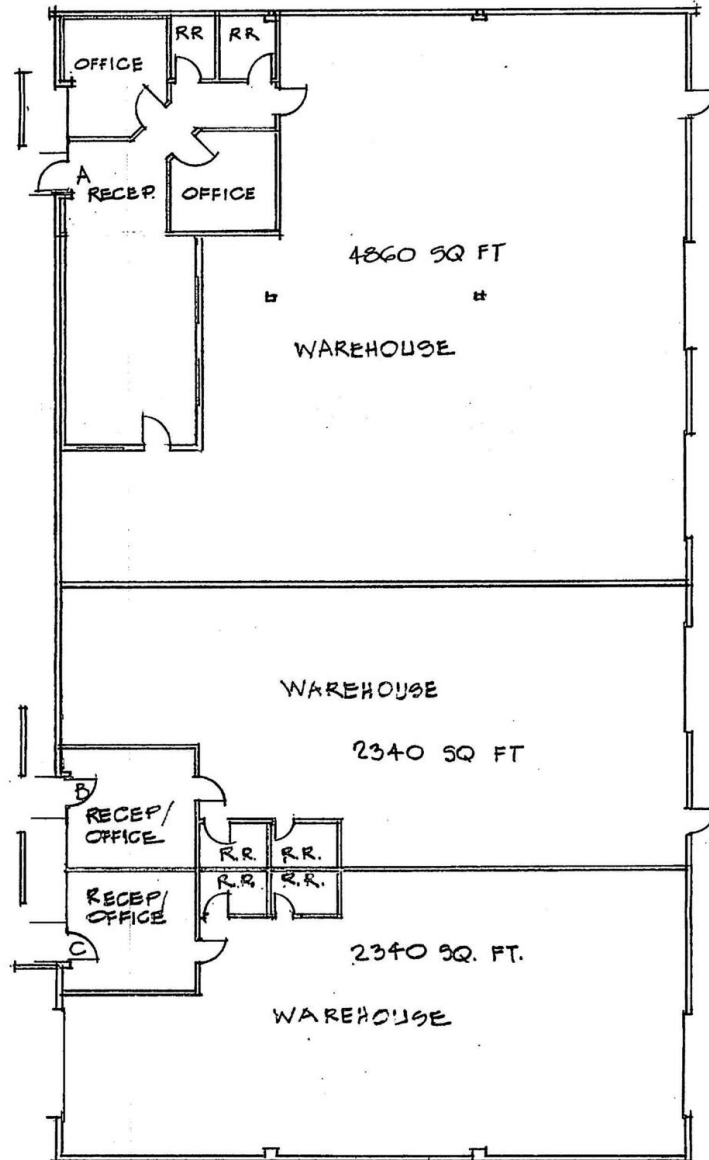
BRYAN INDUSTRIAL PROPERTIES
146 E. ORANGETHORPE AVENUE
ANAHEIM, CA 92801
BRYANINDPROP.COM
CA DRE #00002442



INDUSTRIAL FOR LEASE | 4,680 SF

2818 "C" METROPOLITAN PLACE POMONA, CA 91767

FLOOR PLANS



2818 A, B, C METROPOLITAN PLACE

MATTHEW ROSSMAN
DIRECTOR OF MARKETING
714.783.2107
matt@bryanindprop.com
CA DRE #01794680

BRYAN INDUSTRIAL PROPERTIES
146 E. ORANGETHORPE AVENUE
ANAHEIM, CA 92801
BRYANINDPROP.COM
CA DRE #00002442

