

FOR LEASE

±7,500 SF INDUSTRIAL CONDO
CLASS A BUILDING

33575

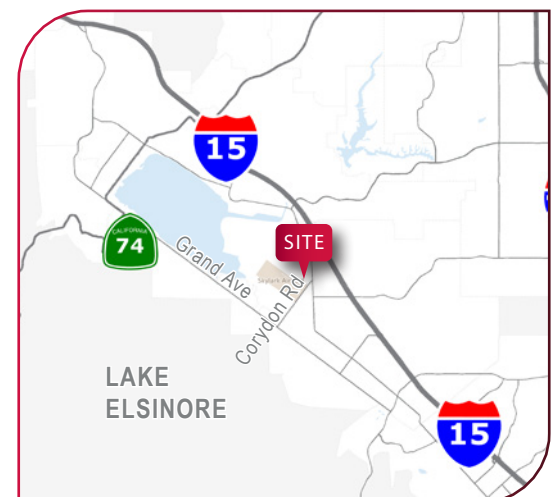
Mission Trail, Units 5 & 6
Lake Elsinore, CA



Property Highlights

- Two ±3,750 SF Class A Industrial Condominiums
- One (1) Large Private Office per Unit
- One (1) Restroom per Unit
- Two (2) Ground Level Doors per Unit (Front and Rear Loading)
- ±20' Warehouse Clearance
- Fire Sprinklers
- Can be Leased Separately or Together
- Built in 2023 (Brand New, Never Been Occupied)
- Gas Service Available

Location Map



For more information, contact:

Exclusive Agent:



Greg Diab, ccim
Principle | Lee & Associates - Orange
714.564.7171
gdiab@lee-associates.com
DRE #01098015

LEE & ASSOCIATES
COMMERCIAL REAL ESTATE SERVICES

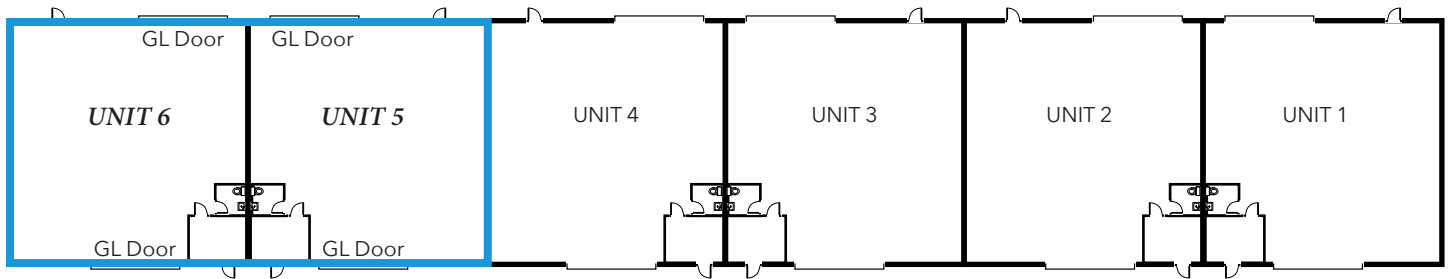
FOR LEASE

±7,500 SF INDUSTRIAL CONDO
CLASS A BUILDING

33575

Mission Trail, Units 5 & 6
Lake Elsinore, CA

Floor Plan



© 2024 LEE & ASSOCIATES - ORANGE. CORPORATE ID #01011260. ALL INFORMATION CONTAINED HEREIN HAS BEEN PROVIDED BY SELLER, LANDLORD, AND/OR THIRD PARTIES, BUT HAS NOT BEEN INDEPENDENTLY VERIFIED BY LEE & ASSOCIATES OR ITS AGENT(S). BUYER, TENANT AND/OR INTERESTED PARTIES SHOULD INDEPENDENTLY VERIFY ALL INFORMATION COMMUNICATED BY THESE SOURCES.

For more information, contact:

Exclusive Agent:



Greg Diab, ccim

Principle | Lee & Associates - Orange

714.564.7171

gdiab@lee-associates.com

DRE #01098015

LEE & ASSOCIATES
COMMERCIAL REAL ESTATE SERVICES