

54 Maxwell

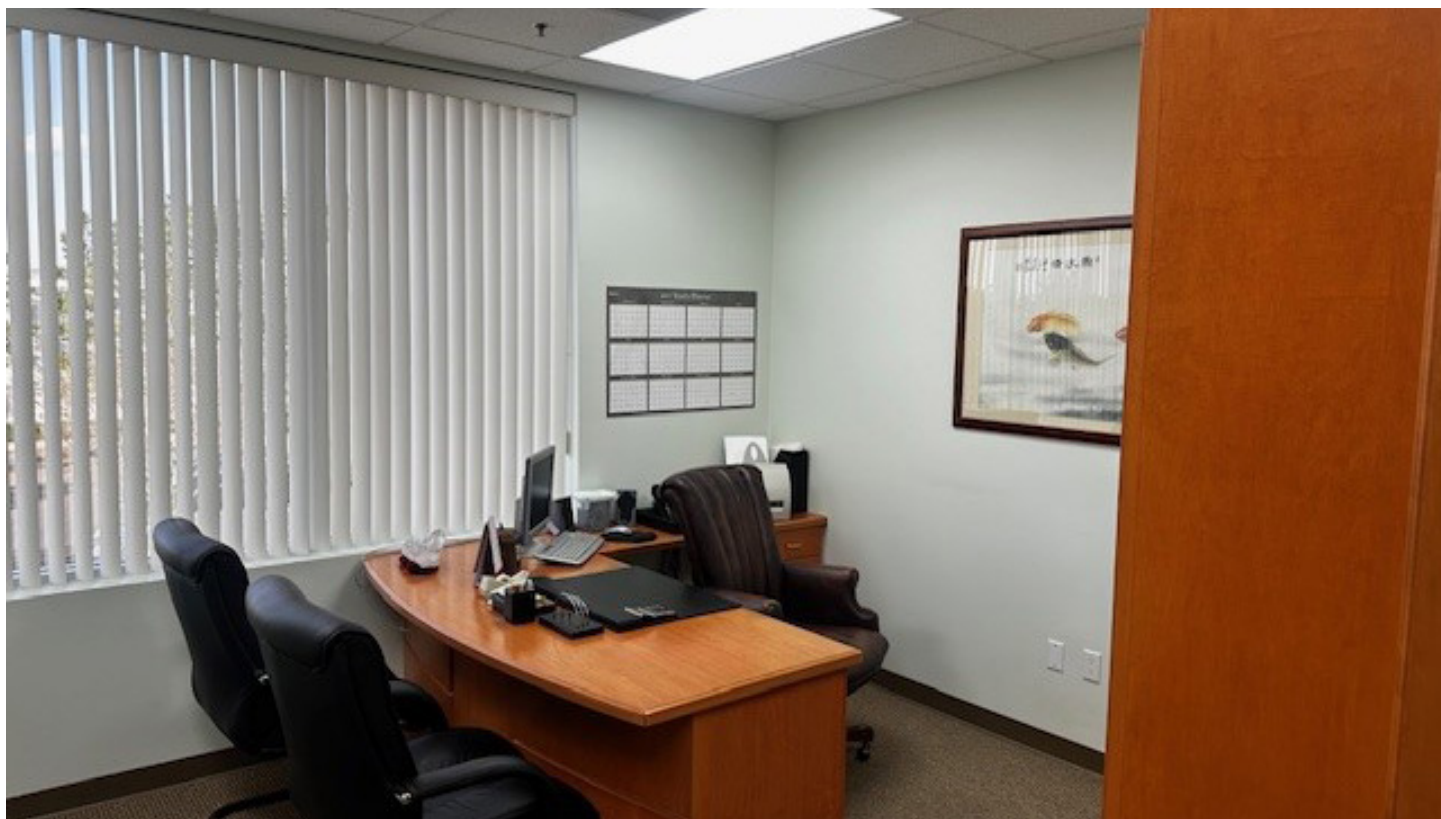
Irvine Spectrum



Property Features

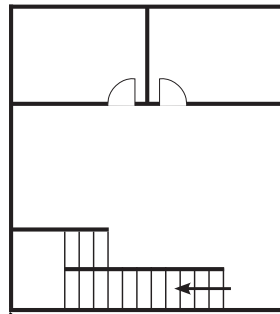
- + ±2,811 SF Industrial Building
- + ±1,400 SF of Office (Two-Stories)
- + One (1) Ground Level Door (Oversized)
- + ±24' Warehouse Clearance
- + 3:1,000 Parking Ratio
- + Fully Fire Sprinklered
- + Easy Access to the 133, I-5 and I-405 freeway
- + Available in 30 Days
- + Estimated Monthly CAM: \$0.54/SF/Mo

Photos

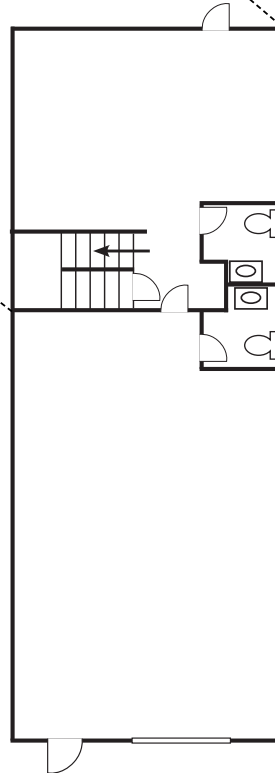


Floor Plan

Second Floor



First Floor



*not to scale

Contact Us

Cameran Lindee

First Vice President

+1 949 725 8653

cameran.lindee@cbre.com

Lic. 01398131

© 2024 CBRE, Inc. All rights reserved. This information has been obtained from sources believed reliable, but has not been verified for accuracy or completeness. You should conduct a careful, independent investigation of the property and verify all information. Any reliance on this information is solely at your own risk. CBRE and the CBRE logo are service marks of CBRE, Inc. All other marks displayed on this document are the property of their respective owners, and the use of such logos does not imply any affiliation with or endorsement of CBRE. Photos herein are the property of their respective owners. Use of these images without the express written consent of the owner is prohibited.