

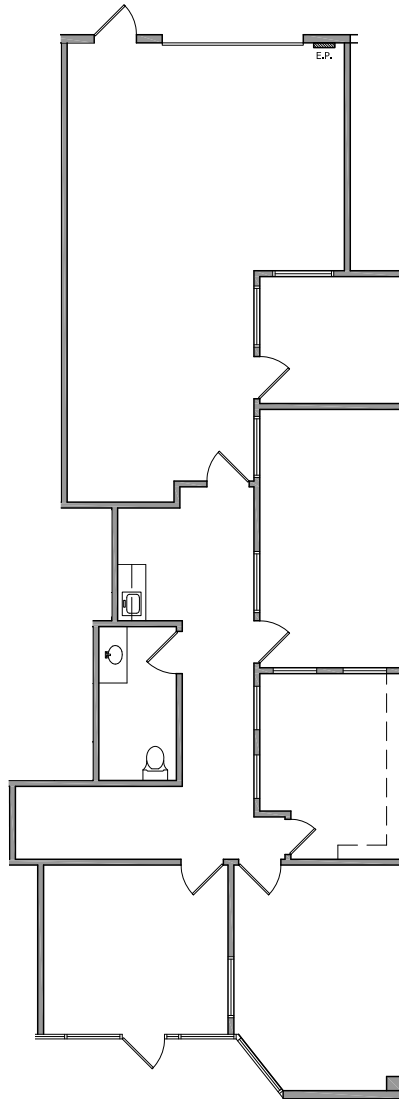
Rockfield Business Center

15520 Rockfield, Suite B110, Irvine, CA



Property Features

- + ±2,256 SF Industrial Unit
- + Multiple Private Offices
- + One (1) Ground level door
- + In-Suite Restroom
- + Kitchenette
- + Located in the Rockfield Business Center
- + Close proximity to the Spectrum Center and many retail amenities
- + Excellent access to the 5 and 405 freeways via Lake Forest Drive or Bake Parkway
- + Sublease through July 31, 2025



Contact Us

Tyler Haly

Vice President

+1 949 725 8486

tyler.haly@cbre.com

Lic. 01944023

© 2024 CBRE, Inc. All rights reserved. This information has been obtained from sources believed reliable but has not been verified for accuracy or completeness. CBRE, Inc. makes no guarantee, representation or warranty and accepts no responsibility or liability as to the accuracy, completeness, or reliability of the information contained herein. You should conduct a careful, independent investigation of the property and verify all information. Any reliance on this information is solely at your own risk. CBRE and the CBRE logo are service marks of CBRE, Inc. All other marks displayed on this document are the property of their respective owners, and the use of such marks does not imply any affiliation with or endorsement of CBRE. Photos herein are the property of their respective owners. Use of these images without the express written consent of the owner is prohibited.